

Southern ***Less Feed, More Gain Bull Sale***

Saturday, October 30, 2010

12 pm CST

at Southern Cattle Company ~ Marianna, Florida



206 Bulls Selling!

ANGUS ♦ BRANGUS/ULTRABLACK ♦ CHAROLAIS

***Plus* 150 COMMERCIAL FEMALES**



To preview videos of sale cattle, please visit us at:
www.southerncattlecompany.com



Southern

Less Feed, More Gain Bull Sale

Saturday, October 30, 2010 ~ 12 pm CST
at Southern Cattle Company ~ Marianna, Florida

To preview videos of sale cattle, please visit us at: www.southerncattlecompany.com

Schedule of Events:

Friday, October 29th:

- ~2:30 pm (CST): Cattle available for viewing
- ~6:00 pm (CST): Food & refreshments

Saturday, October 30th:

- ~Cattle available for viewing
- ~12:00 pm (CST): **Less Feed, More Gain Bull Sale**
Commercial females to follow immediately after bulls.
Food & refreshments will be available sale day.

Sale Day Phone:

850/352-2020

Auctioneer:

Doak Lambert 972/839-6485

Sale Consultant:

Brett Sayre 573/881-1876

Livestock Publication Representatives:

Luke Mobley, *Cattle Today*: 205/932-8000
Jay Purchase, *Gulf Coast Cattleman*: 817/366-4413
Doug Paul, *The Stock Exchange*: 405/820-3982
Michael Sturgess, *Southern Livestock Standard*: 210/867-6863

Sight Unseen Bidding:

If unable to attend the sale, please contact us about our *Sight Unseen Guarantee*. Please reference page 3 for more information.
Lamont Ennis, General Manager: 334/685-7286
Kyle Devoll, Marketing: 979/820-8362
Doug Williams, Sales Agent: 336/745-5252

On-Line Bidding:



Watch & bid online for FREE at

DVAuction

Broadcasting Real-Time Auctions

Can't make the sale? Bid from home with DV Auction's "real-time" internet bidding service!

Buying online is as easy as 1, 2, 3...

1. Create an account at www.dvauction.com under the "register" tab
2. Apply for bidding approval by clicking on the "details" tab at least 24 hours prior to the auction-a DV representative will notify you once you have been approved
3. Tune in for the sale and make your purchases!

After the sale, contact the sale manager or owner to arrange transportation and payment. **High speed internet** is required for successful bidding-be sure to check the lag-time monitor in the top left corner to ensure real-time broadcasts.

Proxy Bidding-if you can't make time to watch the sale, register a proxy bid and let our system represent your bid while you're away. Look for the "proxy bid" tab on the auction listing, and fill in your maximum bids. We'll handle the rest!

Having troubles? During the auction, you can type a message to the operator at any time for assistance. Our full-time support team can also always be reached at (402) 474-5557.

Accommodations:

Dothan, Alabama:

Best Western, 3285 Montgomery Hwy: 334/793-4376
Fairfield Inn, 30308 Ross Clark Circle: 334/671-0100
Country Hearth Inn, 3011 Ross Clark Circle: 334/792-0031
Courtyard by Marriott, 3040 Ross Clark Circle: 334/671-3000
Hampton Inn Suites, 4684 Montgomery Hwy: 334/671-7672
Comfort Inn, 3593 Ross Clark Circle: 334/793-9090

Marianna, Florida:

Comfort Inn, 2175 Hwy 71: 850/526-5600
Fairfield Inn, 4966 Whitetail Dr: 850/482-0012

Transportation:

Airline service is available in nearby Dothan, AL (30 minutes); Tallahassee, FL (1 hour); Panama City, FL (1 hour); or Montgomery, AL (1 hour 30 minutes). There is a 5000 foot runway for private aircraft at Marianna, FL.

Terms and Conditions:

Cattle will sell under the Terms and Conditions as recommended by their respective breed associations. All cattle are to be settled for on sale day, unless prior arrangements have been made. Please reference page 3 for Southern's Bull Guarantee.

Supplemental Information:

A supplemental sheet will be available sale day with complete and up-to-date information. Announcements from the auction block take precedence over sale book information.

Trucking:

Truckers believed to be reliable will be available to assist you in shipping your purchases. Bulls can be delivered to central points in the continental US for no more than \$100/bull. If you choose to haul your own animal sale day then you will receive a \$50 credit off of the purchase price of each bull. **Free trucking on 10 head or more in the continental US!**

Livestock Mortality Insurance:

A representative from Great American Insurance Company will be available to assist you with mortality insurance for your purchases.

Directions to the Sale Sight:

Ranch is located 9 miles north of I-10 and 25 miles south of Dothan, Alabama on US Hwy 231.

DVAuction
Broadcasting Real-Time Auctions

Full Service Livestock Marketing

Video - Photography - The Stock Exchange - Ring Service - Banner Ads - Onsite Viewing Service

Comments from the Sale Management:

It is with a great deal of pride and excitement that we invite you to join us on October 30, for the annual bull sale at Southern Cattle Company. John and Lamont have made every effort to bring you the very best offering with the diversity to fit anyone's program. In order for Southern Cattle to help their customers meet the challenges of today's economy and rising production costs they have implemented a gain test for their bulls to get real world data on feed efficiency. These bulls have passed numerous tests and evaluations at weaning, yearling and breeding age along with undergoing all this testing in the harsh conditions of the panhandle of Florida. These bulls need no acclimation period to adjust to Florida harsh conditions or the South East in general; they were raised and developed here. It was our goal as sales managers to make sure the sale catalog offered as much information as possible for you to review.

Whether you need Angus, Brangus/Ultrablack or Charolais we are confident that you will find the bulls to fit your individual needs. If you have any questions please don't hesitate to call.

Sincerely,
Parker Friedrich and Roger West

Sale Management:



Parker Friedrich - 254/413-2420

parkerfriedrich@earthlink.net

Roger West - 254/434-1095

rogerwest@earthlink.net



Owners, John & Margaret Downs, with their grandchildren



Lamont Ennis
(General Manager) &
Leigh Ann Ennis



Kyle Devoll (Marketing)
& **Crystal Devoll**

Doug Williams
(Sales Agent)

Welcome to Southern's "Less Feed, More Gain" bull sale! Once again, we are excited about this year's sale offering. If you have followed our program, you know by now that this is the fourth year that we have been gathering factual feed efficiency data at The University of Florida test center using the Grow Safe Feed System.

We are delighted to be able to tell you that the data collected is definitely making a positive impact in our own herd of over 3500 mama cows as we use it as a selective mating and culling tool in our own herd. At Southern Cattle Company, we are seeing significant decreases in the amount of feed we are using and yet are able to keep cattle gaining in even better flesh condition than in previous years.

We are even more excited about being able to pass these highly valuable genetic traits along to you our valued customer by way of the bulls being offered in this year's sale. They will make an impact in your herd! If you will use the same tools we have, you will be able to see feed input costs drop from 10%-30% and rate of gain actually increase. This can make a difference between surviving in today's ever changing world and losing out.

We will begin the sale with a great opportunity to jump start your feed efficiency program by offering the pick of nine of the best feed efficient Angus bulls that are trait leaders for just about every EPD measured in the Angus breed. These bulls fit the bill in every area and are phenotypically sound. At the current time they are at the Genex Semen collection facility in Baton Rouge, LA. We don't want to waste any time making semen available on these great herd sire prospects. Pictures and videos are available for your viewing of these bulls. All forage and feed efficient Angus bulls will sell first before we begin the sale of a great set of Brangus bulls.

We will begin the Brangus offering with a great set of three calves to pick from. Once again a set of calves that we believe will jump start any herd in the beef industry with sound functional genetics that will have a significant impact on your bottom line for profit. Any of these Brangus calves will serve you well as they have a tremendous amount of depth of body, bone, and muscle mass to make super herd sire prospects, not to mention the impeccable pedigrees coupled with an excellent set of numbers. You just can't go wrong with any of these picks.

This year's Brangus offering is larger and offers more selection and power than last year's sale. We are excited about the possibilities that we are placing before you.

While the Charolais bull offering is a little smaller than last year, you will be very pleased at the power and muscling ability that these bulls will exemplify.

The first three bulls to sell have herd sire potential written all over them from phenotype and pedigree to a set of numbers that start with low birth weight and explode to high growth at weaning and yearling and will have added carcass value as well.

The whole Charolais offering is big, stout, and well muscled out of cows that have great udders and plenty of milk.

We have always believed that great cows produce great bulls and all of this year's offerings have come from the very best cows here at Southern and from our alliance members herds.

We hope that you will be able to join us and personally evaluate each bull. If for some reason you cannot make it, we will be more than happy to help you make a bull selection.

Sale bulls will be on display from Friday, October 29th at 2:30 pm CST until just before the sale on Saturday, October 30th at 12:00 pm CST.

Please join us Friday evening for light food and refreshments at 6:00 pm after you have had a chance to view the bulls.

Sincerely,
John Downs & Lamont Ennis



The Southern Crew (left to right)

Top Row: Kevin Asbury, Tobias Philpot, Jantzen Lord, Vince Roberts, Matt Whitehead, Robert Carter, Lamar Skipper

Middle Row: Adolfo Jimenez, Jason Waters, Shawn Johnston, Andy Garbett, Lawrence Williams, Allan Phillips, Chad Farren, Brandon Shirah, Brandon Faircloth, Kyle Jurney, Moises Villeda

Bottom Row: Salvador Lopez, Hugo Ramirez, Haley Pollard, Angie Laws, Windie Thomley, Joey Jackson, Rubisel Valazuquez



Videos produced by:

IDEAL
PRODUCTIONS
www.ideal-ideaproductions.com



Less Feed, More Gain Bull Sale

With today's high input and feed costs every producer must maximize their return on investment. For over 20 years the pork and poultry industry have been selecting breeding stock with high feed efficiency values.

Now you can too!

For over four years Southern Cattle Company has been working closely with the University of Florida to identify sires and dams that consistently produce offspring that simply said, **'Produce more red meat on less feed.'**

We have done this by enrolling over 2000 head of calves in the GrowSafe feed system at the University of Florida, where every ounce of feed consumed is weighed and recorded every time an animal feeds at the bunk. Calves are weighed every two weeks and data is compiled over a 90 day test period, to give us hard, factual data to compare feed efficiency within herdmates and contemporaries.

Since we send a large number of ET calves to the test, there are large numbers of full-sibs as well as maternal and paternal sibs being tested at once, which helps identify sires and dams that are more feed efficient even faster. Think of what a difference an animal that eats 10% to 20% less, but actually out gains his or her contemporaries by 50 to 200 pounds. We are talking about an overall cost of production that could be reduced by \$100 per head per year.

Heritability of feed efficiency is estimated to be the same as carcass traits in cattle, which is between .30 and .40. Therefore it is highly heritable.

Southern Cattle Company has combined efforts with Leachman Cattle of Colorado, BIO and the University of Guelph in Ontario, Canada to gather individual feeding records on over 9000 head of cattle. This data has been used to assign every Angus bull in this year's sale with a feed conversion EPD, which is the highest accuracy predictor for true feed conversion to date.

Now you have the facts. Call us today and let us help you save some of you hard earned money!



GrowSafe facility at the University of Florida. A partnership in the future of the Beef Industry!



F:G EPD - A Tool to Help You Increase Your Profits

The F:G EPD number is an Expected Progeny Difference (EPD) for the amount of feed an animal must consume in order to achieve a pound of gain, and is abbreviated F:G. This new EPD has been derived from data collected on over 9000 head of cattle that have been put through actual feed efficiency testing. The more data collected the more accurate the EPD becomes. An average benchmark for testing of this kind would be 3000 to 4000 head. As you can see we have over 9000 head in our database, thus giving a high degree of accuracy. As we continue to add numbers to the database the accuracy will continue to increase.

The actual F:G EPD is derived from the following three things: 1) an animal's individual Average Daily Gain, 2) the actual Average Daily Feed Consumed and 3) the actual conversion of that feed to gain one pound of weight, known as Feed to Gain Ratio. The test is conducted over a 90 day period where every ounce of feed that the animal consumes is weighed daily, and the individual animals are weighed every 14 days. The data is then processed by official research collectors such as the University of Florida and BIO of Ontario, Canada where it is analyzed and processed to calculate F:G EPDs.

The easiest way to understand the F:G EPD is to realize that an EPD of 0 would be the average, or base EPD. The lower the negative number the more feed efficient the animal will be. The greater the positive number the less feed efficient the animal will be.

You will notice that the Angus are the only bulls with F:G EPDs. The reason for this is simple. Not enough Brangus and Charolais have been tested to allow us to accurately assign a F:G EPD. However, Southern Cattle Company is diligently collecting data on both of these breeds, and once more data is collected we will be able to assign accurate F:G EPDs for all of our bulls.

If you have any questions, please do not hesitate to ask. We will help in any way we can!

Examples:

-.50 = Very Feed Efficient
0 = Average Feed Efficiency
+.50 = Less Feed Efficient

Important Facts to Consider

All bulls that go through test are fed a high forage ration, not high corn.

The bulls selling were tested May - September. Hot time of year and still had great gains.

High consumption on test was 32.91#, average consumption was 24.5# and low consumption was 17.51.

Consuming 7# or less to gain 1# (F:G) is achieving true feed efficiency!

A bull consumed 4.5# less than average and still had an ADG of 3.06#, giving a F:G of 6.77#. Over a 90 day period, that saves 405# of feed versus the average consumption.

Look for the F:G EPD on every Angus lot!



Sight Unseen Guarantee

If you are wanting to purchase a bull or female private treaty or at one of our sales and are unable to come to the ranch in person, then contact someone in the Southern Cattle Company sales team. They will be happy to assist you and work to meet your needs.

How does it work?

* Give us a call and describe your selection criteria for the bull(s) and/or female(s) you wish to purchase. You will also need to give a price range for your purchase.

* You will only pay bid price (if the purchase is at auction) or the agreed upon amount of a private treaty animal. There are no extra charges for this service.

* Once the animal(s) have been purchased you will need to confirm your method of payment.

* Your purchase will be delivered to a central point in your area once payment is received. You decide whether or not you like the animal(s) upon delivery. If you do not like them, then you do not own them. It's really that simple. All sight unseen purchases are made with 100% satisfaction guaranteed or we will refund your money.

* Southern Cattle Company wants to earn your business but more importantly they want to earn your trust and respect for doing business properly.

DON'T FORGET...FREE TRUCKING ON 10 HEAD OR MORE! Yes, we will pay the freight for any orders of 10 head or more.

Bull Terms & Conditions

BIDDING

Each animal will be sold to the highest bidder. The auctioneer will settle any disputes as to bids, and his decision on such matters shall be final.

TERMS

Each animal becomes the risk of the purchaser as soon as sold. Arrangements should be made immediately after the sale to pick the animals up or arrange trucking for the purchased animals. Settlement must be made on purchases immediately following the sale.

CERTIFICATE OF REGISTRY

A transferred registration paper will be furnished to the purchaser for each registered animal. Papers will not be transferred until proper settlement has been made on the purchase. Please allow time for processing of paperwork thru the breed association.

HEALTH

All animals are eligible for interstate shipment unless otherwise announced. Health papers will be furnished for each animal.

ANNOUNCEMENTS

Any changes to the information in the sale catalog will be provided sale day on a supplement sheet or announced from the auction block. Such information shall take precedence over cataloged information.

SIGHT UNSEEN PURCHASES

Buyers may purchase cattle through the Southern Cattle Company sight unseen program. You can view a copy of the sight unseen program at the top of this page.

BREEDING GUARANTEE

Any bull which settles cows by natural service and passes a fertility test made by a competent veterinarian, mutually agreed upon by buyer and seller, during the first breeding season shall be considered a breeder.

OPTIONS, PRIVILEGES OF RETURN & ADJUSTMENT

All claims for adjustment or refund must be made in writing and be postmarked prior to August 1, 2011. If a bull is injured prior to August 1, 2011, so as to make him infertile, Southern Cattle Company will provide you with a satisfactory replacement, if available, or issue you a credit equal to the bull's purchase price minus the salvage value received for that bull. This is not a life insurance policy. We will not replace a dead animal if it is killed or dies for any reason. We would suggest that normal care still needs to be exercised toward these animals and that particularly the yearling bulls not be allowed to get too thin.

Any request for returns or adjustments due to disposition will be handled at the sole discretion of Southern Cattle Company. Notification of potential problems must be received in writing within one month of delivery date.

If an animal is sold and through DNA testing is proven to have incorrect parentage, as represented by the registration paper, the seller is obligated to make satisfactory adjustment on the purchase price or refund the purchase price or issue a credit for the initial selling price upon return of the animal to the farm of the seller.

RIGHTS & OBLIGATIONS

The above terms and conditions of sale shall constitute a contract between the buyer and seller of each animal and shall be equally binding upon both. Other than the guarantees and warranties stated above, no other warranties or guarantees are expressed or implied. Each sale or resale of an animal constitutes a separate transaction.

Southern Cattle Company, the sale manager(s) nor any other person(s) connected with the management of the sale, assumes any liability, legal or otherwise.

Southern Alliance Program

Southern Cattle Company is proud of their Alliance Program and it's participants. Several ranches from across the United States have joined forces with Southern in marketing bulls. In this year's sale many of the Brangus and Ultrablack bulls originated from Alliance member herds. Each of these ranches shares the same vision for the cattle industry and all of the members understand the importance of producing sound, functional cattle that can go to you, our customer, and service your needs for years to come. Every herd has made a commitment of producing only the highest quality of cattle and as the relationship between Southern, the Alliance members, and you the customer grows we think you will agree that everyone is committed to producing a product that fits your needs.

Alliance members represented in this year's sale are listed below with a code beside their ranch that designates their program.

Ranch	Owner	Location	Code
Hengst Brothers Brangus	Dennis, Greg, & Karl Hengst	Giddings, TX	HBB
Indian Hills Ranch	Buck & Sydney Thomason	Cranfills Gap, TX	IH
L & W Cattle Co.	James Latham & Doug Williams	Mocksville, NC	L&W
La Terre Plantation	Charles Crochet	Lafayette, LA	LTP
Mutscher Brangus	Kenneth Mutcher	Brenham, TX	KM
Roberts Ranch	Alan & Robyn Roberts	Giddings, TX	RR
Robert Yates Ranch	Robert Yates	Hamptonville, NC	RYR
Star G Ranches	Nick Gandy	Ben Wheeler, TX	SGR
The Farm	Lynn McCann	Ocala, FL	TF

Angus Sires Represented

SQ Credence 675



BW +.9
WW +59
YW +94
SC -.11
Milk +24
CW -14
Marb +.73
RE +.18
Fat -.040
\$B +38.31

GAR New Design 5050



BW +.9
WW +54
YW +106
SC -.31
Milk +37
CW +31
Marb +.77
RE +.80
Fat +.024
\$B +74.01

SS Objective T510 OT26



BW +1.1
WW +70
YW +124
SC +.10
Milk +30
CW +5
Marb +.75
RE +.39
Fat -.030
\$B +65.35

GAR Predestined



BW +4.0
WW +52
YW +98
SC +.31
Milk +30
CW +24
Marb +1.16
RE +.49
Fat +.044
\$B +68.99

GAR - EGL Protege



BW +1.1
WW +65
YW +114
SC -.95
Milk +20
CW +23
Marb +.65
RE +.41
Fat +.0008
\$B +66.97

Brangus Sires Represented

IFCC "Cash" 5137P5



BW 3.3
WW 44
YW 82
Milk 6
TM 28
SC .60
REA .53
Marb -.12
Fat .007

Chief of Indian Hills 23P68



BW 2.7
WW 46
YW 83
Milk -.1
TM 22
SC .40
REA .72
Marb .06
Fat .008

Csonka of Brinks 30R4



BW 4.0
WW 44
YW 83
Milk 6
TM 28
SC 1.90
REA .69
Marb .21
Fat -.001

Henderson of Brinks 30S7

BW .4
WW 49
YW 82
Milk -2
TM 23
SC 1.50
REA .64
Marb .17
Fat -.001

TJM Insurrection 544T

BW 1.2
WW 35
YW 63
Milk 3
TM 20
SC .80
REA .23
Marb -.04
Fat -.004

Lambert of Brinks 317R3

BW .3
WW 31
YW 46
Milk 5
TM 20
SC .50
REA .57
Marb .49
Fat .006

WAT Lead Gun 33P6

BW -2.6
WW 41
YW 63
Milk -2
TM 18
SC 1.00
REA .77
Marb -.09
Fat -.014

Suhn's Next Step 331R7

BW -1.5
WW 13
YW 45
Milk 16
TM 23
SC .70
REA .39
Marb -.13
Fat -.005

MC Real Deal 541R3

BW 1.7
WW 44
YW 84
Milk 4
TM 26
SC .70
REA .70
Marb -.19
Fat .015

Singletary of Brinks 675R

BW 1.6
WW 29
YW 63
Milk 4
TM 18
SC 1.40
REA .58
Marb .24
Fat .002

Charolais Sires Represented

DVCR Duke K09

BW .4
WW 45
YW 69
Milk 15
SC .7
CW 16
REA -.08
Marb .12
Fat -.030

Southern Gulf Wind 4688

BW 3.1
WW 40
YW 59
Milk -3
SC .9
CW 18
REA .22
Marb .04
Fat .013

CCR Schurshot 1107F7

BW 4.9
WW 40
YW 67
Milk 11
SC .5
CW 26
REA .25
Marb .07
Fat .030

Schurrtop HCR Rancher

BW 2.9
WW 27
YW 56
Milk 15
SC .8
CW 21
REA .37
Marb .17
Fat -.011

JDJ Smokester J1377

BW 2.3
WW 29
YW 40
Milk 26
SC 1.0
CW 18
REA .93
Marb -.48
Fat -.045

Southern Angus

Special Pick on Lots 1 - 9
Selling 50% interest & shared possession in one of these lots.

We are offering buyers choice in 9 bulls that came to the top of the Southern program, they excelled in every possible way including performance, ultrasound data and feed efficiency. Southern Cattle Company is offering 50% interest and shared possession in one of these outstanding herd sires. The work has been done; the hard part will be deciding which one to take. All nine bulls are currently at Genex in Louisiana.

Perhaps the best son of Protege, the #1 profitability sire at ABS Global to sell to date. This bull is a "Man"! He's big boned, good footed, with lots of thickness and mass. A flush brother to the Lot 2 bull. This calf earned an IMF ratio of 108 and comes from a time tested, proven family. He offers a nice spread from birth to yearling and stems from the famous foundation Rita, G A R EXT 614. This calf covers all the bases in terms of phenotype, pedigree, performance, feed efficiency and he has an EPD profile that ranks in the top 10% of the non parent bull population for Marb, \$Feedlot and \$Beef as well as top 20% for WW and YW.



Southern Protege 91183						F:G -.45	
1	DOB: 1/21/2009	Reg: +16603202	Tattoo: 91183				
GAR-EGL PROTEGE +15098880	RITO 112 OF 2536 RITO 616	RITO 616 OF 4B20 6807	BW	CW			
	L B 6807 ISABEL 339	G A R PRECISION 2536	I+1.4	+14			
	G A R RETAIL PRODUCT	D H D TRAVELER 6807	WW	Marb			
	G A R NEW DESIGN 1441	L B E31 ISABEL 168	I+52	+65			
G A R RETAIL PRODUCT H155 +15237083		G A R PRECISION 1680	YW	RE			
		G A R EXT 4927	I+99	+26			
		B/R NEW DESIGN 036	Milk	Fat			
		G A R PRECISION 2168	I+20	+006			
			SC	SB			
			76	633	1222	34.2	12.8
							6.26
							+58.84

Southern Protege 91182						F:G -.50	
2	DOB: 1/21/2009	Reg: +16615693	Tattoo: 91182				
GAR-EGL PROTEGE +15098880	RITO 112 OF 2536 RITO 616	RITO 616 OF 4B20 6807	BW	CW			
	L B 6807 ISABEL 339	G A R PRECISION 2536	I+1.4	+14			
	G A R RETAIL PRODUCT	D H D TRAVELER 6807	WW	Marb			
	G A R NEW DESIGN 1441	L B E31 ISABEL 168	I+52	+59			
G A R RETAIL PRODUCT H155 +15237083		G A R PRECISION 1680	YW	RE			
		G A R EXT 4927	I+99	+28			
		B/R NEW DESIGN 036	Milk	Fat			
		G A R PRECISION 2168	I+20	-.004			
			SC	SB			
			76	658	1194	33.5	13.1
							5.76
							+58.69

Flush brother to Lot 1 above, this bull is just a little cleaner thru the neck than his big brother and very sound and attractive. Most people that see these two side by side are split as to what bull they like best. What do you think? Another Protégé son that comes from a time tested proven family. He offers a nice spread from birth to yearling and stems from the famous foundation Rita, G A R EXT 614. This calf covers all the bases in terms of phenotype, pedigree, performance, feed efficiency and he has an EPD profile that ranks in the top 10% of the non parent bull population for \$Feedlot and \$Beef, 15% for YW and Marb as well as 25% for WW and RE.



Southern Design 86090						F:G -.81
3	DOB: 11/6/2008	Reg: +16484056	Tattoo: 86090			
G A R NEW DESIGN 5050 +13728513	B/R NEW DESIGN 036	V D A R NEW TREND 315	BW	CW		
	G A R PRECISION 706	B/R BLACKCAP EMPRESS 76	I+1.4	+29		
	BON VIEW NEW DESIGN 1407	G A R PRECISION 1680	WW	Marb		
	G A R PLOWMAN G240	G A R EXT 2114	I+53	+.85		
SOUTHERN G240 BLACKCAP 2485 +15226272		B/R NEW DESIGN 036	YW	RE		
		BON VIEW PRIDE 664	I+101	+.48		
		PLOWMAN 1627 OF MILLBRAESAR	Milk	Fat		
		G A R PRECISION 2536	I+31	+.037		
			SC	\$B		
				+67.72		
BW	Adj WW	Adj YW	SC	Adj REA	Adj IMF	
78	772	1258	34	12.6	6.40	

This bull is sired by the very popular "5050" bull at Select Sires. He is a little bigger in frame but very long sided. This bull has tremendous potential with an IMF EPD of +.85 and has the highest F:G index number of -.81 of any bull in the sale. We believe there will be a lot of good come out of this calf. This herd sire offers a nice spread from birth to yearling and earned an impressive IMF ratio of 120. He comes from a donor dam that is a full sister to a former number one marbling cow in the breed and ranks in the top 1% of the non parent bull population for \$Beef, 5% for Milk, CW, Marb and RE, 10% for YW and \$Feedlot as well as top 25% for CED and WW.



Southern Protege 91152						F:G -.25
4	DOB: 1/19/2009	Reg: +16603200	Tattoo: 91152			
GAR-EGL PROTEGE +15098880	RITO 112 OF 2536 RITO 616	RITO 616 OF 4B20 6807	BW	CW		
	L B 6807 ISABEL 339	G A R PRECISION 2536	I+.7	+15		
	B/R NEW DESIGN 036	D H D TRAVELER 6807	WW	Marb		
	BON VIEW PRIDE 664	L B E31 ISABEL 168	I+50	+.53		
SOUTHERN PRIDE 3474 +14727291		V D A R NEW TREND 315	YW	RE		
		B/R BLACKCAP EMPRESS 76	I+93	+.30		
		G A R SLEEP EASY 1009	Milk	Fat		
		BON VIEW PRIDE 1551	I+23	+.008		
			SC	\$B		
				+55.29		
BW	Adj WW	Adj YW	SC	Adj REA	Adj IMF	
97	704	1258	33	13.7	3.76	

An own son of the feed efficiency sire from ABS Global, Protégé, out of a full sister to the well known Pathfinder sire, New Design 1407. This bull sits at the top of the breed for calving ease, growth and carcass, he earned an individual RE ratio of 106 and ranks in the top 15% of the non parent bull population for CED and \$Beef as well as top 25% for BW, YW, Marb, RE, \$Wean and \$Feedlot. Protege and 1407 are two proven wires at the top of the charts for feed efficiency. This bull could be the "sleeper" of the group.



Southern Predestined 91322						F:G -.25
5	DOB: 1/29/2009	Reg: +16616559	Tattoo: 91322			
G A R PREDESTINED #13395344	B/R NEW DESIGN 036	V D A R NEW TREND 315	BW	CW		
	G A R EXT 4206	B/R BLACKCAP EMPRESS 76	I+2.6	+23		
	BON VIEW NEW DESIGN 1407	N BAR EMULATION EXT	WW	Marb		
	DAVIS YR BLACKBIRD 558H	G A R 6807 TRAVELER 1432	I+49	+1.39		
SOUTHERN BLACKBIRD 4259 +14921335		B/R NEW DESIGN 036	YW	RE		
		BON VIEW PRIDE 664	I+90	+.62		
		G A R PRECISION 1680	Milk	Fat		
		G A R TRAVELER 760	I+32	+.044		
			SC	\$B		
				+70.65		
BW	Adj WW	Adj YW	SC	Adj REA	Adj IMF	
80	701	1285	35	15.9	9.24	

Marbling, ribeye, feed efficiency and phenotype is what this bull is all about. He has jumped all of the hurdles with a +1.40 Marb EPD that is off the charts, big RE EPD of +.63 and F:G index of -.25. This calf is in the top 5 on the non parent bull list for marbling. His donor dam, who is a daughter of the former number one RE cow in the breed, has 22 progeny ratios of 118 for Marbling and 102 for RE. This calf earned individual ultrasound ratios of 160 for IMF and 117 for RE to give him an EPD profile that ranks in the top 1% for Milk, Marb, RE and \$Beef as well as top 10% for CW.



6

DOB: 2/15/2009

Reg: +16603216

Tattoo: 91504

F:G -.30

G A R PREDESTINED

#13395344

B/R NEW DESIGN 036

G A R EXT 4206

G A R PRECISION 1680

V D A R NEW TREND 315

B/R BLACKCAP EMPRESS 76

N BAR EMULATION EXT

G A R 6807 TRAVELER 1432

TEHAMA BANDO 155

9J9 G A R 856

RITO 616 OF 4B20 6807

G A R PRECISION 2536

BW

CW

I+2.9

+20

WW

Marb

I+46

+.86

YW

RE

I+90

+.56

Milk

Fat

I+25

-.001

SC

\$B

+68.57

SOUTHERN 1194 RITA 6295

+15359585

RITA 1194 OF 2536 RITO 616

BW

Adj WW

Adj YW

SC

Adj REA

Adj IMF

79

664

1120

34.2

14.8

6.30

Another awesome Predestined son that covers all the bases. He earned individual ultrasound ratios of 109 for both IMF and RE and comes from a high income producing family. His donor dam, who is a daughter of a former Southern donor that now resides at Deer Valley Farm, has 7 progeny turned in to AHIR that ratio 111 for IMF and 101 for RE. Predestined 91504 ranks in the top 1% for \$Beef, 3% for Marb, 15% for CW, 20% for RE and 25% for Milk. Another repeat - great pedigree, performance, carcass value and feed efficiency. The trend continues!

Lot 7, the first of two flush brothers that are out of the foundation Rita in the Southern program, G A R New Design 1942, who has an amazing 76 progeny turned in to AHIR that ratio 106 for IMF and 105 for RE. This bull is in the top 25 marbling bulls in the breed and earned an IMF ratio of 157 and a RE ratio of 100 to rank in the top 1% for Milk, Marb and \$Beef, 10% for RE and 25% for CW. Lot 8, the second son of the foundation Rita in the Southern program, G A R New Design 1942, who has an amazing 76 progeny turned in to AHIR that ratio 106 for IMF and 105 for RE. He earned individual ultrasound ratios of 128 for IMF and 101 for RE to rank in the top 1% for Milk and Marb, 2% for \$Beef, 10% for RE and 25% for CW.

A total package! Once again - not once but twice in these two flush brothers. Lots 7 and 8, TRUE CONSISTENCY!

7

DOB: 3/9/2009

Reg: +16627886

Tattoo: 92069

F:G -.28

G A R PREDESTINED

#13395344

B/R NEW DESIGN 036

G A R EXT 4206

BON VIEW NEW DESIGN 1407

G A R 1407 NEW DESIGN 1942

14222415

G A R PRECISION 810

G A R EXT 614

V D A R NEW TREND 315

B/R BLACKCAP EMPRESS 76

N BAR EMULATION EXT

G A R 6807 TRAVELER 1432

B/R NEW DESIGN 036

BON VIEW PRIDE 664

G A R PRECISION 1680

BW	CW
I+3.8	+17
WW	Marb
I+46	+1.12
YW	RE
I+87	+.45
Milk	Fat
I+36	+.020
SC	\$B
I+.19	+66.12

BW	Adj WW	Adj YW	SC	Adj REA	Adj IMF
73	629	1173	35	13.8	7.39



8

DOB: 3/3/2009

Reg: +16622446

Tattoo: 92031

F:G -.18

G A R PREDESTINED

#13395344

B/R NEW DESIGN 036

G A R EXT 4206

BON VIEW NEW DESIGN 1407

G A R 1407 NEW DESIGN 1942

14222415

G A R PRECISION 810

G A R EXT 614

V D A R NEW TREND 315

B/R BLACKCAP EMPRESS 76

N BAR EMULATION EXT

G A R 6807 TRAVELER 1432

B/R NEW DESIGN 036

BON VIEW PRIDE 664

G A R PRECISION 1680

BW	CW
I+3.8	+17
WW	Marb
I+46	+1.30
YW	RE
I+87	+.44
Milk	Fat
I+36	+.011
SC	\$B
I+.19	+68.48

BW	Adj WW	Adj YW	SC	Adj REA	Adj IMF
76	675	1177	34.5	13.6	9.07

9 Southern Mile High 86079 **F:G -.48**
 DOB: 11/5/2008 Reg: +16505679 Tattoo: 86079

BON VIEW NEW DESIGN 1407 B/R NEW DESIGN 036
 RIVERBEND MILE HIGH 3718 BON VIEW PRIDE 664
 14512407 G A R PRECISION 1919 G A R PRECISION 1680
 C A FUTURE DIRECTION 5321 G A R EXT 544
 BASIN LUCY 804N G A R PRECISION 1680
 +14401048 BASIN LUCY 178E C A MISS POWER FIX 308
 BASIN MAX 602C
 BASIN LUCY 855A

BW	Adj WW	Adj YW	SC	Adj REA	Adj IMF
84	731	1304	36	12.8	6.61

BW	CW
I+3.2	+33
WW	Marb
I+48	+83
YW	RE
I+94	+42
Milk	Fat
I+37	+037
SC	\$B
I+.48	+66.29

If you like big, stout, rugged bulls that mash the scales with their progeny this is the bull you have been waiting for. With a F:G index of -.48 and the explosive growth from this bull, he will put money in your pocket. A high marbling Mile high son with a pedigree loaded with carcass merit, growth and maternal strength, he stems from the legendary Basin Lucy 178E through the famous Southern Donor Lucy 804N. This stud earned an individual IMF ratio of 124 and ranks in the top 1% for Milk and CW, 2% for %Beef, 3% for Marb, 10% for RE and 20% for YW and \$Feedlot.



10 Southern Protege 91165 **F:G -.42**
 DOB: 1/18/2009 Reg: +16603201 Tattoo: 91165

RITO 112 OF 2536 RITO 616 RITO 616 OF 4B20 6807
 GAR-EGL PROTEGE G A R PRECISION 2536
 +15098880 L B 6807 ISABEL 339 D H D TRAVELER 6807
 TWIN VALLEY PRECISION E161 L B E31 ISABEL 168
 SOUTHERN DESIGN 3799 G A R PRECISION 1680
 +14863465 G A R NEW DESIGN 1200 W C C BLACKCAP C9
 B/R NEW DESIGN 036
 G A R PRECISION 2536

BW	Adj WW	Adj YW	SC	Adj REA	Adj IMF
79	704	1275	35.6	14.3	4.94

BW	CW
I+2.6	+26
WW	Marb
I+57	+43
YW	RE
I+104	+45
Milk	Fat
I+22	+019
SC	\$B
I-.32	+59.54

High growth bull with a cool pedigree. 105 RE ratio. Top 3% CW EPD. Top 5% YW. Top 10% WW, RE, \$Feedlot and \$Beef.



11 Southern Mile High 91222 **F:G -.40**
 DOB: 1/21/2009 Reg: +16615695 Tattoo: 91222

BON VIEW NEW DESIGN 1407 B/R NEW DESIGN 036
 RIVERBEND MILE HIGH 3718 BON VIEW PRIDE 664
 14512407 G A R PRECISION 1919 G A R PRECISION 1680
 ROCKN D AMBUSH 1531 G A R EXT 544
 A PLUS BLACKCAP 2108 PARAMONT AMBUSH 2172
 +14386181 G A R SCOTCH CAP 867 MS BLACKCAP BAND OF R D
 SCOTCH CAP
 BLACKCAP G A R 51

BW	Adj WW	Adj YW	SC	Adj REA	Adj IMF
82	658	1284	35.7	14.4	4.69

BW	CW
I+2.4	+22
WW	Marb
I+45	+58
YW	RE
I+79	+46
Milk	Fat
I+28	-012
SC	\$B
I+.20	+61.36

106 RE ratio. Top 5% \$Beef. Top 10% Milk, CW, RE and \$Grid. Top 15% Milk.

12 Southern Dollar B 86236 **F:G -.47**
 DOB: 11/14/2008 Reg: +16505269 Tattoo: 86236

RIVERBEND MILE HIGH 3718 BON VIEW NEW DESIGN 1407
 BASIN DOLLAR B 9916 G A R PRECISION 1919
 +15371285 BASIN LUCY 804N C A FUTURE DIRECTION 5321
 JAUER 353 TRAVELER 589 27 BASIN LUCY 178E
 K C F MISS 589 N456 JAUER 7111 TRAVELER 353 719
 14704093 K C F MISS BOB K310 JAUER 6807 TRAVELER 27 085
 BALDRIDGE BOB
 CONNEALY 6807 647

BW	Adj WW	Adj YW	SC	Adj REA	Adj IMF
70	742	1164	35.6	14.7	4.93

BW	CW
I+2.7	+28
WW	Marb
I+51	+42
YW	RE
I+96	+50
Milk	Fat
I+29	-010
SC	\$B
	+62.20

Outcross pedigree. 114 RE ratio. Top 2% CW EPD. Top 4% Milk, RE and \$Beef. Top 20% YW and \$Feedlot. Top 25% WW and \$Grid.



13 Southern Predestined 91315 **F:G -.34**
 DOB: 1/28/2009 Reg: +16603211 Tattoo: 91315

B/R NEW DESIGN 036 V D A R NEW TREND 315
 G A R PREDESTINED B/R BLACKCAP EMPRESS 76
 #13395344 G A R EXT 4206 N BAR EMULATION EXT
 BON VIEW BANDO 598 G A R 6807 TRAVELER 1432
 SOUTHERN 1194 RITA 4734 TEHAMA BANDO 155
 +14948786 RITA 1194 OF 2536 RITO 616 BON VIEW DORA 56
 RITO 616 OF 4B20 6807
 G A R PRECISION 2536

BW	Adj WW	Adj YW	SC	Adj REA	Adj IMF
80	704	1278	34.9	14.8	4.34

BW	CW
I+2.8	+26
WW	Marb
I+49	+57
YW	RE
I+92	+42
Milk	Fat
I+27	+016
SC	\$B
I+.07	+61.33

109 RE ratio. Top 4% CW EPD and \$Beef. Top 10% Milk and RE. Top 20% Marb and \$Grid. Top 25% YW and \$Feedlot.

Southern Special Force 91457						F:G -.07
14	DOB: 2/13/2009	Reg: 16603215	Tattoo: 91457			
SOUTHERN GT SPECIAL FORCE 17 15497150	GT SHEAR FORCE	N BAR PRIME TIME D806	BW	CW		
		GT SISKIN 106	I+1.2	+23		
	GT EVERGREEN 83	GT METRO	WW	Marb		
		GT EVERGREEN 676	I+67	+81		
G A R 1407 NEW DESIGN 292 +14222254	BON VIEW NEW DESIGN 1407	B/R NEW DESIGN 036	YW	RE		
		BON VIEW PRIDE 664	I+108	+31		
	G A R PRECISION 4519	G A R PRECISION 1680	Milk	Fat		
		G A R EXT 2104	I+21	+027		
			SC	\$B		
			I-.09	+64.69		

Big spread herd sire prospect. 108 IMF ratio. Top 1% WW. Top 2% \$Wean and \$Beef. Top 5% for YW, CW and Marb. Top 10% \$Feedlot. Top 20% CED, RE and \$Grid.

Southern Rito 86358						F:G -.05
15	DOB: 11/26/2008	Reg: 16561987	Tattoo: 86358			
RITO 658 OF 2536 SA +15445241	SITZ ALLIANCE 6595	SITZ TRAVELER 8180	BW	CW		
		SITZ BARBARAMERE JET 2698	I+1.6	+15		
	G A R PRECISION 2536	G A R PRECISION 1680	WW	Marb		
		G A R EXT 2104	I+50	+43		
SOUTHERN 101 ENTENSE 4795 +15244714	BON VIEW NEW DESIGN 1407	B/R NEW DESIGN 036	YW	RE		
		BON VIEW PRIDE 664	I+91	+08		
	D/D EVERELDA ENTENSE 101	BALDRIDGE BOB	Milk	Fat		
		SITZ EVERELDA ENTENSE 1137	I+30	+021		
			SC	\$B		
			I-.09	+47.15		

Proven pedigree. 101 RE ratio. Top 3% Milk EPD. Top 20% \$Wean.

Southern Mile High 86477						F:G -.22
16	DOB: 12/7/2008	Reg: 16581135	Tattoo: 86477			
G A R PREDESTINED #13395344	B/R NEW DESIGN 036	V D A R NEW TREND 315	BW	CW		
		B/R BLACKCAP EMPRESS 76	I+2.2	I+14		
	G A R EXT 4206	N BAR EMULATION EXT	WW	Marb		
		G A R 6807 TRAVELER 1432	I+50	I+.64		
S A V SENSATION 3156 14455338	BON VIEW NEW DESIGN 1407	B/R NEW DESIGN 036	YW	RE		
		BON VIEW PRIDE 664	I+87	I+.22		
	S A V SENSATION 8195	BON VIEW BANDO 598	Milk	Fat		
		S A R COMETS SENSATION 5786	I+24	I+.011		
			SC	\$B		
			I-.03	+54.70		

Top 15% Marb, \$Grid and \$Beef

Southern Revolution 91527						F:G -.18
17	DOB: 2/18/2009	Reg: +16631288	Tattoo: 91527			
IDEAL 4355 OF OT26 2440 14779044	S S OBJECTIVE T510 OT26	S S TRAVELER 6807 T510	BW	CW		
		S S MISS RITA R011 7R8	I+2.3	+22		
	IDEAL 2440 OF 7407 7275	IDEAL 7407 OF 1418 4465	WW	Marb		
		IDEAL 7275 OF 809 1470	I+59	+82		
SOUTHERN BLACKBIRD 4259 +14921335	BON VIEW NEW DESIGN 1407	B/R NEW DESIGN 036	YW	RE		
		BON VIEW PRIDE 664	I+85	+26		
	DAVIS YR BLACKBIRD 558H	G A R PRECISION 1680	Milk	Fat		
		G A R TRAVELER 760	I+33	+009		
			SC	\$B		
			I-.03	+63.77		

Calving ease with growth. 105 IMF ratio. Top 1% Milk. Top 4% WW, Marb, \$Wean and \$Beef. Top 10% CW and \$Grid. Top 20% YW. Top 25% CED.

Southern Prime Star 91166						F:G .28
18	DOB: 1/18/2009	Reg: +16627823	Tattoo: 91166			
GARDENS PRIME STAR 14740749	N BAR PRIME TIME D806	GARDENS PRIME TIME	BW	CW		
		N BAR MISS EMULOUS A404	I+2.3	+5		
	GREEN GARDEN JILT C242 S1	S S TRAVELER 6807 T510	WW	Marb		
		GREEN GARDEN JILT 9242 S1	I+43	+54		
CALLAWAYS BLACKCAP 0803 +14927578	B C C BUSHWACKER 41-93	PARAMONT AMBUSH 2172	YW	RE		
		R C ANITA T BANDO 918903	I+78	-.04		
	G A R SCOTCH CAP 867	SCOTCH CAP	Milk	Fat		
		BLACKCAP G A R 51	I+23	+034		
			SC	\$B		
			I-.03	+38.55		

Proven pedigree. Top 20% Marb. Top 25% CED.

Southern Prime Star 91215						F:G .15
19	DOB: 1/22/2009	Reg: +16603203	Tattoo: 91215			
GARDENS PRIME STAR 14740749	N BAR PRIME TIME D806	GARDENS PRIME TIME	BW	CW		
		N BAR MISS EMULOUS A404	I+2.4	+21		
	GREEN GARDEN JILT C242 S1	S S TRAVELER 6807 T510	WW	Marb		
		GREEN GARDEN JILT 9242 S1	I+52	+77		
TEHAMA ERICA P765 14717767	TEHAMA 717 BAND 876	TEHAMA BAND 717	YW	RE		
		TEHAMA ECHO B287	I+96	+25		
	TEHAMA ERICA K826	G A R PRECISION 1680	Milk	Fat		
		TEHAMA ERICA G366	I+23	+027		
			SC	\$B		
			I+.13	+60.94		

Outcross pedigree. 112 IMF ratio. Top 5% Marb EPD. Top 10% \$Beef. Top 15% CW and \$Grid. Top 20% WW, YW and \$Feedlot. Top 25% \$Wean.

Southern Predestined 91195						F:G -.10
20	DOB: 1/21/2009	Reg: +16576900	Tattoo: 91195			
G A R PREDESTINED #13395344	B/R NEW DESIGN 036	V D A R NEW TREND 315	BW	CW		
		B/R BLACKCAP EMPRESS 76	I+2.0	+16		
	G A R EXT 4206	N BAR EMULATION EXT	WW	Marb		
		G A R 6807 TRAVELER 1432	I+44	+93		
PROSPECT HILL PRIMROSE 514 +15023333	C A FUTURE DIRECTION 5321	G A R PRECISION 1680	YW	RE		
		C A MISS POWER FIX 308	I+82	+40		
	SUMMITCREST PRIMROSE 2J02	SUMMITCREST SCOTCH CAP 0845	Milk	Fat		
		SUMMITCREST PRIMROSE 0G84	I+28	+042		
			SC	\$B		
			I+.05	+59.38		

Proven pedigree for marbling. Top 2% Marb EPD. Top 5% \$Grid. Top 10% Milk, RE and \$Beef. Top 25% CED.

Southern Rito 92122						F:G -.07
21	DOB: 3/16/2009	Reg: 16581136	Tattoo: 92122			
RITO 6FA7 OF RITA 2V6 FD +15498453	C A FUTURE DIRECTION 5321	G A R PRECISION 1680	BW	CW		
		C A MISS POWER FIX 308	I+1.3	+22		
	RITA 2V6 OF 2536 1407	BON VIEW NEW DESIGN 1407	WW	Marb		
		G A R PRECISION 2536	I+46	+67		
V A R RITA 7144 +15640875	C R A BEXTOR 872 5205 608	B A R EXT TRAVELER 205	YW	RE		
		CRA LADY JAYE 608 498 S EASY	I+87	+38		
	STERLING V A R RITA 439	TWIN VALLEY PRECISION E161	Milk	Fat		
		G A R NEW DESIGN 1300	I+29	+021		
			SC	\$B		
			I-.27	+60.77		

Top 4% Milk EPD. Top 10% CW, Marb and \$Beef. Top 15% CED, RE and \$Grid.

Southern Predestined 75057						F:G .10
22	DOB: 9/8/2007	Reg: +16151236	Tattoo: 75057			
G A R PREDESTINED #13395344	B/R NEW DESIGN 036	V D A R NEW TREND 315	BW	CW		
		B/R BLACKCAP EMPRESS 76	I+2.9	+16		
	G A R EXT 4206	N BAR EMULATION EXT	WW	Marb		
G A R PRECISION 810 +13724092	G A R PRECISION 1680	G A R 6807 TRAVELER 1432	I+46	+90		
		TEHAMA BANDO 155	YW	RE		
	G A R EXT 614	9J9 G A R 856	I+86	+39		
			Milk	Fat		
			I+30	+034		
			SC	\$B		
			I-17	+60.39		
BW	Adj WW	Adj YW	SC	Adj REA	Adj IMF	
77	622	1126	38.6	11.7	4.91	

Herd Sire. 142 IMF ratio. 102 RE ratio. Top 3% Milk and Marb. Top 5% \$Grid and \$Beef. Top 10% RE. Top 15% CED. Top 25% CW and \$Wean.



Southern Predestined 91206						F:G .02
23	DOB: 1/22/2009	Reg: +16622433	Tattoo: 91206			
G A R PREDESTINED #13395344	B/R NEW DESIGN 036	V D A R NEW TREND 315	BW	CW		
		B/R BLACKCAP EMPRESS 76	I+2.3	+10		
	G A R EXT 4206	N BAR EMULATION EXT	WW	Marb		
G A R T510 TRAVELER H142 +14300937	S S TRAVELER 6807 T510	G A R 6807 TRAVELER 1432	I+46	+86		
		D H D TRAVELER 6807	YW	RE		
	G A R SLEEP EASY 1328	S S MISS HI SPADE A114	I+91	+39		
			Milk	Fat		
			I+27	+010		
			SC	\$B		
			I+.01	+60.09		
BW	Adj WW	Adj YW	SC	Adj REA	Adj IMF	
76	595	1137	35.6	13.2	5.57	

Top 3% Marb and \$Grid. Top 10% Milk, RE and \$Beef. Top 15% CED. Top 20% \$Wean. Top 25% \$Feedlot.

Southern Predestined 91228						F:G .01
24	DOB: 1/23/2009	Reg: +16622435	Tattoo: 91228			
G A R PREDESTINED #13395344	B/R NEW DESIGN 036	V D A R NEW TREND 315	BW	CW		
		B/R BLACKCAP EMPRESS 76		+16		
	G A R EXT 4206	N BAR EMULATION EXT	WW	Marb		
SOUTHERN SCOTCH CAP 5145 +15226328	N BAR EMULATION EXT	G A R 6807 TRAVELER 1432		+54		
		EMULATION N BAR 5522	YW	RE		
	G A R SCOTCH CAP 867	N BAR PRIMROSE 2424		+29		
			Milk	Fat		
				+043		
			SC	\$B		
BW	Adj WW	Adj YW	SC	Adj REA	Adj IMF	
79	679	1135	34	13.3	4.98	

Top 20% Marb. Top 25% CW and RE.

Southern Predestined 91237						F:G .19
25	DOB: 1/23/2009	Reg: +16576901	Tattoo: 91237			
G A R PREDESTINED #13395344	B/R NEW DESIGN 036	V D A R NEW TREND 315	BW	CW		
		B/R BLACKCAP EMPRESS 76	I+2.0	+16		
	G A R EXT 4206	N BAR EMULATION EXT	WW	Marb		
PROSPECT HILL PRIMROSE 514 +15023333	C A FUTURE DIRECTION 5321	G A R 6807 TRAVELER 1432	I+44	+90		
		G A R PRECISION 1680	YW	RE		
	SUMMITCREST PRIMROSE 2J02	C A MISS POWER FIX 308	I+82	+39		
			Milk	Fat		
			I+28	+052		
			SC	\$B		
			I+.05	+57.55		
BW	Adj WW	Adj YW	SC	Adj REA	Adj IMF	
78	680	1150	34.7	12.3	5.02	

Proven pedigree for marbling. Top 2% Marb EPD. Top 10% Milk, RE, \$Grid and \$Beef. Top 25% CED and CW.

Southern Predestined 91270						F:G -.24
26	DOB: 1/24/2009	Reg: +16603208	Tattoo: 91270			
G A R PREDESTINED #13395344	B/R NEW DESIGN 036	V D A R NEW TREND 315	BW	CW		
		B/R BLACKCAP EMPRESS 76	I+3.2	+24		
	G A R EXT 4206	N BAR EMULATION EXT	WW	Marb		
SOUTHERN C9 BLACKCAP 4490P +15317687	C A FUTURE DIRECTION 5321	G A R 6807 TRAVELER 1432	I+46	+80		
		G A R PRECISION 1680	YW	RE		
	W C C BLACKCAP C9	C A MISS POWER FIX 308	I+87	+32		
			Milk	Fat		
			I+27	+034		
			SC	\$B		
			I-46	+61.51		
BW	Adj WW	Adj YW	SC	Adj REA	Adj IMF	
80	616	1293	36.7	12.7	5.37	

Top 4% Marb EPD. Top 5% CW and \$Beef. Top 10% Milk. Top 15% \$Grid. Top 20% RE.

Southern Predestined 91272						F:G -.09
27	DOB: 1/24/2009	Reg: +16603210	Tattoo: 91272			
G A R PREDESTINED #13395344	B/R NEW DESIGN 036	V D A R NEW TREND 315	BW	CW		
		B/R BLACKCAP EMPRESS 76		+18		
	G A R EXT 4206	N BAR EMULATION EXT	WW	Marb		
SOUTHERN SCOTCH CAP 5145 +15226328	N BAR EMULATION EXT	G A R 6807 TRAVELER 1432		+61		
		EMULATION N BAR 5522	YW	RE		
	G A R SCOTCH CAP 867	N BAR PRIMROSE 2424		+25		
			Milk	Fat		
				+033		
			SC	\$B		
			I-06			
BW	Adj WW	Adj YW	SC	Adj REA	Adj IMF	
76	676	1210	33.7	13.1	5.61	

Proven pedigree. Top 15% Marb EPD. Top 20% CW.

Southern Predestined 91277 [AMC]						F:G -.14
28	DOB: 1/25/2009	Reg: +16697386	Tattoo: 91277			
G A R PREDESTINED #13395344	B/R NEW DESIGN 036	V D A R NEW TREND 315	BW	CW		
		B/R BLACKCAP EMPRESS 76	I+2.6	+21		
	G A R EXT 4206	N BAR EMULATION EXT	WW	Marb		
SOUTHERN BLACKBIRD 4259 +14921335	BON VIEW NEW DESIGN 1407	G A R 6807 TRAVELER 1432	I+49	+93		
		B/R NEW DESIGN 036	YW	RE		
	DAVIS YR BLACKBIRD 558H	BON VIEW PRIDE 664	I+90	+48		
			Milk	Fat		
			I+32	+031		
			SC	\$B		
			I-06	+65.24		
BW	Adj WW	Adj YW	SC	Adj REA	Adj IMF	
79	648	1259	34.3	13.7	4.91	

101 RE ratio. Top 2% Milk, Marb and \$Beef, 4% RE. Top 25% CED and CW.

Southern Predestined 91352						F:G -.02
29	DOB: 2/2/2009	Reg: +16622443	Tattoo: 91352			
G A R PREDESTINED #13395344	B/R NEW DESIGN 036	V D A R NEW TREND 315	BW	CW		
	G A R EXT 4206	B/R BLACKCAP EMPRESS 76	I+3.8	+17		
		N BAR EMULATION EXT	WW	Marb		
G A R 1407 NEW DESIGN 1942 14222415	BON VIEW NEW DESIGN 1407	G A R 6807 TRAVELER 1432	I+46	+.77		
		B/R NEW DESIGN 036	YW	RE		
		BON VIEW PRIDE 664	I+87	+.47		
	G A R PRECISION 810	G A R PRECISION 1680	Milk	Fat		
		G A R EXT 614	I+36	+.005		
			SC	\$B		
			I+.19	+63.29		

Herd Sire! 103 RE ratio. Top 1% Milk. Top 5% marb, RE, \$Grid and \$Beef. Top 20% CW. Top 25% CED.

Southern Predestined 91400						F:G -.28
30	DOB: 2/2/2009	Reg: +16615696	Tattoo: 91400			
G A R PREDESTINED #13395344	B/R NEW DESIGN 036	V D A R NEW TREND 315	BW	CW		
	G A R EXT 4206	B/R BLACKCAP EMPRESS 76	I+3.8	+20		
		N BAR EMULATION EXT	WW	Marb		
G A R 1407 NEW DESIGN 1942 14222415	BON VIEW NEW DESIGN 1407	G A R 6807 TRAVELER 1432	I+46	+.87		
		B/R NEW DESIGN 036	YW	RE		
		BON VIEW PRIDE 664	I+87	+.53		
	G A R PRECISION 810	G A R PRECISION 1680	Milk	Fat		
		G A R EXT 614	I+36	+.009		
			SC	\$B		
			I+.25	+66.58		

Herd sire prospect. 112 RE ratio. Top 1% Milk and \$Beef. Top 2% Marb. Top 3% RE. Top 15% CW.

Southern Predestined 91453						F:G .02
31	DOB: 2/9/2009	Reg: 16622444	Tattoo: 91453			
G A R PREDESTINED #13395344	B/R NEW DESIGN 036	V D A R NEW TREND 315	BW	CW		
	G A R EXT 4206	B/R BLACKCAP EMPRESS 76	I+3.8	+16		
		N BAR EMULATION EXT	WW	Marb		
SOUTHERN BLACKBIRD S354 +16186036	BR MIDLAND	G A R 6807 TRAVELER 1432	I+56	+.80		
		TWIN VALLEY PRECISION E161	YW	RE		
		BR ROYAL LASS 7036-19	I+101	+.39		
	DAVIS YR BLACKBIRD 558H	G A R PRECISION 1680	Milk	Fat		
		G A R TRAVELER 760	I+25	+.037		
			SC	\$B		
			I+.19	+61.10		

101 RE ratio. Top 5% Marb and \$Beef. Top 10% WW, YW, \$Feedlot and \$Grid. Top 15% RE. Top 25% Milk.



Southern Predestined 92068						F:G -.24
32	DOB: 3/9/2009	Reg: +16627885	Tattoo: 92068			
G A R PREDESTINED #13395344	B/R NEW DESIGN 036	V D A R NEW TREND 315	BW	CW		
	G A R EXT 4206	B/R BLACKCAP EMPRESS 76	I+3.8	+19		
		N BAR EMULATION EXT	WW	Marb		
G A R 1407 NEW DESIGN 1942 14222415	BON VIEW NEW DESIGN 1407	G A R 6807 TRAVELER 1432	I+46	+1.17		
		B/R NEW DESIGN 036	YW	RE		
		BON VIEW PRIDE 664	I+87	+.42		
	G A R PRECISION 810	G A R PRECISION 1680	Milk	Fat		
		G A R EXT 614	I+36	+.01		
			SC	\$B		
			I+.19	+68.21		

In the top 110 marbling bulls in the breed. 137 IMF ratio. Top 1% Milk, Marb, \$Grid and \$Beef. Top 10% RE. Top 20% CW. Top 25% CED.

Southern Predestined 95188						F:G -.18
33	DOB: 9/23/2009	Reg: Pending	Tattoo: 95188			
G A R PREDESTINED #13395344	B/R NEW DESIGN 036	V D A R NEW TREND 315	BW	CW		
	G A R EXT 4206	B/R BLACKCAP EMPRESS 76	I+00	+00		
		N BAR EMULATION EXT	WW	Marb		
G A R 112 RITO 775 15134032	RITO 112 OF 2536 RITO 616	G A R 6807 TRAVELER 1432	I+00	+00		
		RITO 616 OF 4B20 6807	YW	RE		
		G A R PRECISION 2536	I+000	+00		
	G A R 1407 NEW DESIGN 3093	BON VIEW NEW DESIGN 1407	Milk	Fat		
		G A R 6148 EMULATION 1819	I+30	+.000		
			SC	\$B		
			I+.00	+72.36		

Southern Protege 91174 [NHC]						F:G -.57
34	DOB: 1/20/2009	Reg: +16696705	Tattoo: 91174			
GAR-EGL PROTEGE +1509880	RITO 112 OF 2536 RITO 616	RITO 616 OF 4B20 6807	BW	CW		
		G A R PRECISION 2536	I+2.6	+31		
		D H D TRAVELER 6807	WW	Marb		
SOUTHERN DESIGN 3799 +14863465	L B 6807 ISABEL 339	L B E31 ISABEL 168	I+57	+.57		
	TWIN VALLEY PRECISION E161	G A R PRECISION 1680	YW	RE		
		W C C BLACKCAP C9	I+104	+.41		
	G A R NEW DESIGN 1200	B/R NEW DESIGN 036	Milk	Fat		
		G A R PRECISION 2536	I+22	+.012		
			SC	\$B		
			I+.43	+64.90		

108 IMF ratio, 104 RE ratio. Top 2% CW and \$Beef, 5% YW, RE and \$Feedlot. Top 10% WW, 15% Marb.



Southern Protege 91227						F:G -.30
35	DOB: 1/23/2009	Reg: +16631474	Tattoo: 91227			
GAR-EGL PROTEGE +1509880	RITO 112 OF 2536 RITO 616	RITO 616 OF 4B20 6807	BW	CW		
	L B 6807 ISABEL 339	G A R PRECISION 2536	I+2.1	+22		
	G A R PRECISION 1680	D H D TRAVELER 6807	WW	Marb		
	G A R EXT 2114	L B E31 ISABEL 168	I+55	+26		
LAGRAND BLACKCAP N77 +14389684		TEHAMA BANDO 155	YW	RE		
		9J9 G A R 856	I+97	+37		
		N BAR EMULATION EXT	Milk	Fat		
		G A R SCOTCH CAP 867	I+26	+010		
			SC	\$B		
			I-74	+50.48		
BW	Adj WW	Adj YW	SC	Adj REA	Adj IMF	
79	723	1305	34.7	15.4	3.48	

113 RE ratio. Top 10% CW EPD. Top 15% WW, YW and RE. Top 20% Scrotal, Milk, \$Wean and \$Feedlot. Top 25% \$Beef.



Southern Credence 92081						F:G -.29
36	DOB: 3/9/2009	Reg: 16582219	Tattoo: 92081			
SQ CREDENCE 675 +15705880	S S OBJECTIVE T510 OT26	S S TRAVELER 6807 T510	BW	CW		
	RITA 3540 OF 021 RITO 111	S S MISS RITA R011 7R8	I+.8	+1		
	RITO 112 OF 2536 RITO 616	RITO 111 OF 2536 RITO 616	WW	Marb		
	G A R 1407 NEW DESIGN 1013	RITA 021 OF 7R11 RDA	I+59	+77		
G A R 112 RITO 2205 15252219		RITO 616 OF 4B20 6807	YW	RE		
		G A R PRECISION 2536	I+95	+37		
		BON VIEW NEW DESIGN 1407	Milk	Fat		
		G A R PRECISION 819	I+27	-.031		
			SC	\$B		
			I+.08	+54.89		
BW	Adj WW	Adj YW	SC	Adj REA	Adj IMF	
71	779	1237	36.3	14.3	5.96	

111 IMF ratio. 101 RE ratio. Top 1% \$Wean and \$Grid. Top 5% WW and Marb. Top 10% CED and Milk. Top 15% RE. Top 20% YW and \$Beef. Top 25% BW.

Southern Credence 92161						F:G -.18
37	DOB: 3/20/2009	Reg: 16617232	Tattoo: 92161			
SQ CREDENCE 675 +15705880	S S OBJECTIVE T510 OT26	S S TRAVELER 6807 T510	BW	CW		
	RITA 3540 OF 021 RITO 111	S S MISS RITA R011 7R8	I+2.1	+0		
	G A R PREDESTINED	RITO 111 OF 2536 RITO 616	WW	Marb		
	3H SOUTHERN BLACKCAP 2015	RITA 021 OF 7R11 RDA	I+56	+72		
SOUTHERN BLACKCAP 8435 +15247142		B/R NEW DESIGN 036	YW	RE		
		G A R EXT 4206	I+90	+21		
		BT DIRECTION 65D	Milk	Fat		
		G A R PRECISION 2536	I+26	-.003		
			SC	\$B		
			I-.08	+48.11		
BW	Adj WW	Adj YW	SC	Adj REA	Adj IMF	
76	692	1074	33.6	12.5	5.41	

Top 2% \$Grid. Top 5% \$Wean. Top 10% WW and Marb. Top 20% Milk. Top 25% CED.

Southern Credence 92149						F:G -.25
38	DOB: 3/20/2009	Reg: +16582220	Tattoo: 92149			
SQ CREDENCE 675 +15705880	S S OBJECTIVE T510 OT26	S S TRAVELER 6807 T510	BW	CW		
	RITA 3540 OF 021 RITO 111	S S MISS RITA R011 7R8	I+.9	I-6		
	BON VIEW NEW DESIGN 1407	RITO 111 OF 2536 RITO 616	WW	Marb		
	G A R PRECISION 4529	RITA 021 OF 7R11 RDA	I+46	I+.74		
G A R 1407 NEW DESIGN H184 +14800713		B/R NEW DESIGN 036	YW	RE		
		BON VIEW PRIDE 664	I+81	I+.15		
		G A R PRECISION 1680	Milk	Fat		
		G A R EXT 2114	I+25	I-.013		
			SC	\$B		
			I-.29	+41.95		
BW	Adj WW	Adj YW	SC	Adj REA	Adj IMF	
68	612	1066	31.4	12.1	6.3	

Heifer bull. Top 1% \$Grid. Top 10% CED and Marb. Top 15% \$Wean. Top 25% BW and Milk.

Southern Credence 94055 [NHC]						F:G -.19
39	DOB: 8/18/2009	Reg: +16696366	Tattoo: 94055			
SQ CREDENCE 675 +15705880	S S OBJECTIVE T510 OT26	S S TRAVELER 6807 T510	BW	CW		
	RITA 3540 OF 021 RITO 111	S S MISS RITA R011 7R8	I+.6	I+1		
	G A R RETAIL PRODUCT	RITO 111 OF 2536 RITO 616	WW	Marb		
	G A R 1407 NEW DESIGN 1792	RITA 021 OF 7R11 RDA	I+49	I+.79		
G A R RETAIL PRODUCT 2064 +14790480		G A R PRECISION 1680	YW	RE		
		G A R EXT 4927	I+84	I+.32		
		BON VIEW NEW DESIGN 1407	Milk	Fat		
		G A R PRECISION 4519	I+22	I-.008		
			SC	\$B		
			I-.04	+51.15		
BW	Adj WW	Adj YW	SC	Adj REA	Adj IMF	
70	618		33			

Calving ease heifer bull. Top 3% CED. Top 4% Marb. Top 10% BW. Top 20% RE and \$Wean. Top 25% \$Beef.

Southern Credence 95090						F:G -.24
40	DOB: 9/14/2009	Reg: +16699428	Tattoo: 95090			
SQ CREDENCE 675 +15705880	S S OBJECTIVE T510 OT26	S S TRAVELER 6807 T510	BW	CW		
	RITA 3540 OF 021 RITO 111	S S MISS RITA R011 7R8	I+2.6	I+4		
	G A R PINNACLE	RITO 111 OF 2536 RITO 616	WW	Marb		
	L B 6807 ISABEL 339	RITA 021 OF 7R11 RDA	I+52	I+.75		
RCK ISABEL 339N +15058355		G A R PRECISION 1680	YW	RE		
		G A R EXT 2114	I+90	I+.33		
		D H D TRAVELER 6807	Milk	Fat		
		L B E31 ISABEL 168	I+25	I-.009		
			SC	\$B		
			I+.04	+54.09		
BW	Adj WW	Adj YW	SC	Adj REA	Adj IMF	
64	589		33			

Dam is a full sister to Protégé. Top 5% Marb, 20% WW, RE and \$Beef. Top 25% Milk.

Southern Credence 95109 [NHC]						F:G -.07
41	DOB: 9/15/2009	Reg: +16699426	Tattoo: 95109			
SQ CREDENCE 675 +15705880	S S OBJECTIVE T510 OT26	S S TRAVELER 6807 T510	BW	CW		
	RITA 3540 OF 021 RITO 111	S S MISS RITA R011 7R8	I+1.0	I+8		
	C A FUTURE DIRECTION 5321	RITO 111 OF 2536 RITO 616	WW	Marb		
	BREESHA OF CONANGA 1251	RITA 021 OF 7R11 RDA	I+56	I+.78		
BREELA OF CONANGA 3991 15150701		G A R PRECISION 1680	YW	RE		
		C A MISS POWER FIX 308	I+96	I+.50		
		CONNEALY DEEP CANYON 454	Milk	Fat		
		BREETA OF CONANGA 525	I+27	I-.014		
			SC	\$B		
			I-.07	+61.07		
BW	Adj WW	Adj YW	SC	Adj REA	Adj IMF	
66	609		31			

Calving ease with growth and carcass merit. Top 5% Marb and \$Wean, 10% for CED, WW, Milk, RE and \$Beef. Top 20% YW, 25% \$Feedlot.

Southern Credence 95126						F:G .25
42	DOB: 9/17/2009	Reg: +16699425	Tattoo: 95126			
SQ CREDECE 675 +15705880	S S OBJECTIVE T510 OT26	S S TRAVELER 6807 T510	BW	CW		
	RITA 3540 OF 021 RITO 111	S S MISS RITA R011 7R8	I+1.6	I-1		
	N BAR EMULATION EXT	RITO 111 OF 2536 RITO 616	WW	Marb		
	G A R SCOTCH CAP 867	RITA 021 OF 7R11 RDA EMULATION N BAR 5522	I+51	I+.52		
SOUTHERN BLACKCAP 867 6175 +15665163		N BAR PRIMROSE 2424	YW	RE		
		SCOTCH CAP	I+83	I+.13		
		BLACKCAP G A R 51	Milk	Fat		
			I+25	I+.016		
			SC	\$B		
				+38.31		
BW	Adj WW	Adj YW	SC	Adj REA	Adj IMF	
70	540		33			

From a family known for carcass merit and added value. Top 10% \$Wean. Top 20% Marb. Top 25% Milk.

Southern Credence 95403						F:G -.38
43	DOB: 10/16/2009	Reg: +16698807	Tattoo: 95403			
SQ CREDECE 675 +15705880	S S OBJECTIVE T510 OT26	S S TRAVELER 6807 T510	BW	CW		
	RITA 3540 OF 021 RITO 111	S S MISS RITA R011 7R8	I+2.3	I-1		
	BON VIEW NEW DESIGN 1407	RITO 111 OF 2536 RITO 616	WW	Marb		
	G A R PRECISION 810	RITA 021 OF 7R11 RDA B/R NEW DESIGN 036	I+50	I+.80		
G A R 1407 NEW DESIGN 1942 14222415		BON VIEW PRIDE 664	YW	RE		
		G A R PRECISION 1680	I+85	I+.32		
		G A R EXT 614	Milk	Fat		
			I+33	I-.031		
			SC	\$B		
				I-.02		
				+51.62		
BW	Adj WW	Adj YW	SC	Adj REA	Adj IMF	
76	696		34			

Comes from a family known for added value. Top 1% Milk, 4% Marb, 10% CED. Top 20% RE, \$Wean and 25% \$Beef.

Southern Objective 91515						F:G .03
44	DOB: 2/17/2009	Reg: +16622445	Tattoo: 91515			
S S OBJECTIVE T510 OT26 #13776378	S S TRAVELER 6807 T510	D H D TRAVELER 6807	BW	CW		
	S S MISS RITA R011 7R8	S S MISS HI SPADE A114	I+1.1	+1		
	BON VIEW NEW DESIGN 1407	S S RITO RITO R76 R011	WW	Marb		
	G A R PRECISION 810	S S MISS ULTRESS U56 B/R NEW DESIGN 036	I+55	+.66		
G A R 1407 NEW DESIGN L1234 +15034867		BON VIEW PRIDE 664	YW	RE		
		G A R PRECISION 1680	I+102	+.20		
		G A R EXT 614	Milk	Fat		
			I+30	-.036		
			SC	\$B		
				+53.64		
BW	Adj WW	Adj YW	SC	Adj REA	Adj IMF	
88	699	1115	33.5	12.4	5.43	

Calving ease with growth. Top 5% CED, Milk and \$Grid. Top 10% YW, Marb and \$Feedlot. Top 20% WW, \$Wean and \$Beef.

Southern Objective 94088						F:G .22
45	DOB: 8/20/2009	Reg: +16696642	Tattoo: 94088			
S S OBJECTIVE T510 OT26 #13776378	S S TRAVELER 6807 T510	D H D TRAVELER 6807	BW	CW		
	S S MISS RITA R011 7R8	S S MISS HI SPADE A114	I+1.5	I+10		
	B/R NEW DESIGN 036	S S RITO RITO R76 R011	WW	Marb		
	G A R PRECISION 706	S S MISS ULTRESS U56 V D A R NEW TREND 315	I+55	I+.64		
SOUTHERN PRECISION 5255 +15066380		B/R BLACKCAP EMPRESS 76	YW	RE		
		G A R PRECISION 1680	I+100	I+.41		
		G A R EXT 2114	Milk	Fat		
			I+29	I-.011		
			SC	\$B		
				+59.42		
BW	Adj WW	Adj YW	SC	Adj REA	Adj IMF	
80	730		34			

Dam is a full sister to GAR New Design 5050. Calving ease with growth. Top 4% Milk, 10% CED, Marb, RE and \$Beef. Top 15% WW, YW and \$Feedlot.

Southern Ultimate 94008						F:G -.10
46	DOB: 8/10/2009	Reg: +16697432	Tattoo: 94008			
G A R ULTIMATE 15464043	S S OBJECTIVE T510 OT26	S S TRAVELER 6807 T510	BW	CW		
	G A R LOAD UP 1314	S S MISS RITA R011 7R8		I+22		
	G A R PREDESTINED	RAB-GAR LOAD UP 4049J	WW	Marb		
	G A R PRECISION 810	G A R NEW DESIGN 80 B/R NEW DESIGN 036		I+.85		
FTJ RITA 503 +15089181		G A R EXT 4206	YW	RE		
		G A R PRECISION 1680		I+.48		
		G A R EXT 614	Milk	Fat		
				I+.035		
			SC	\$B		
BW	Adj WW	Adj YW	SC	Adj REA	Adj IMF	
71	689		31			

From a family known for added value. Top 3% for Marb EPD and 5% for RE.

Southern Ultimate 94103						F:G .09
47	DOB: 8/23/2009	Reg: +16697433	Tattoo: 94103			
G A R ULTIMATE 15464043	S S OBJECTIVE T510 OT26	S S TRAVELER 6807 T510	BW	CW		
	G A R LOAD UP 1314	S S MISS RITA R011 7R8	I+3.3	I+24		
	G T MAXIMUM	RAB-GAR LOAD UP 4049J	WW	Marb		
	WOODHILL GAMMER 145L-229P	G A R NEW DESIGN 80 SCOTCH CAP	I+60	I+.54		
WOODHILL GAMMER 145L-229P +14792037		GT MISS TRAVELER 58	YW	RE		
		B C C BUSHWACKER 41-93	I+102	I+.33		
		BON VIEW GAMMER 85	Milk	Fat		
			I+24	I+.039		
			SC	\$B		
				I+.05		
BW	Adj WW	Adj YW	SC	Adj REA	Adj IMF	
71	628		33			

From the same family that produced New Design 878 and Woodhill Foresight. Top 3% WW, 5% CW, 10% YW. Top 20% Marb, RE, \$Feedlot and \$Beef.

Southern Ultimate 94114						F:G .01
48	DOB: 8/24/2009	Reg: +16697434	Tattoo: 94114			
G A R ULTIMATE 15464043	S S OBJECTIVE T510 OT26	S S TRAVELER 6807 T510	BW	CW		
	G A R LOAD UP 1314	S S MISS RITA R011 7R8	I+3.3	I+24		
	G T MAXIMUM	RAB-GAR LOAD UP 4049J	WW	Marb		
	WOODHILL GAMMER 145L-229P	G A R NEW DESIGN 80 SCOTCH CAP	I+60	I+.54		
WOODHILL GAMMER 145L-229P +14792037		GT MISS TRAVELER 58	YW	RE		
		B C C BUSHWACKER 41-93	I+102	I+.33		
		BON VIEW GAMMER 85	Milk	Fat		
			I+24	I+.039		
			SC	\$B		
				I+.05		
BW	Adj WW	Adj YW	SC	Adj REA	Adj IMF	
71	665		35			

From the same family that produced New Design 878 and Woodhill Foresight. Top 3% WW, 5% CW, 10% YW. Top 20% Marb, RE, \$Feedlot and \$Beef.

Southern Mile High 85022						F:G -.42
49	DOB: 9/10/2008	Reg: +16543965	Tattoo: 85022			
RIVERBEND MILE HIGH 3718 14522407	BON VIEW NEW DESIGN 1407	B/R NEW DESIGN 036	BW	CW		
	G A R PRECISION 1919	BON VIEW PRIDE 664	I+1.4	+17		
	N BAR EMULATION EXT	G A R PRECISION 1680	WW	Marb		
	LEACHMAN ERICA 0025	G A R EXT 544	I+42	+57		
SOUTHERN ERICA 3500 +14929394		EMULATION N BAR 5522	YW	RE		
		N BAR PRIMROSE 2424	I+79	+17		
		TEHAMA BANDO 155	Milk	Fat		
		LEACHMAN ERICA 8058	I+26	+025		
			SC	\$B		
				I-.03		
BW	Adj WW	Adj YW	SC	Adj REA	Adj IMF	
80	796	1006	35	11.2	4.63	

Right Time family. 101 IMF ratio. Top 15% RE EPD. Top 20% Milk and CW. Top 25% \$Beef.

50 Southern Mile High 85035 **F:G -.14**
 DOB: 9/11/2008 Reg: +16543966 Tattoo: 85035

BON VIEW NEW DESIGN 1407 B/R NEW DESIGN 036
 RIVERBEND MILE HIGH 3718 BON VIEW PRIDE 664
 14522407 G A R PRECISION 1919 G A R PRECISION 1680
 N BAR EMULATION EXT G A R EXT 544
 SOUTHERN ERICA 3500 EMULATION N BAR 5522
 +14929394 LEACHMAN ERICA 0025 N BAR PRIMROSE 2424
 TEHAMA BANDO 155
 LEACHMAN ERICA 8058

BW	Adj WW	Adj YW	SC	Adj REA	Adj IMF
79	690	991	34	11.9	3.56

BW	CW
I+1.4	+17
WW	Marb
I+42	+46
YW	RE
I+79	+23
Milk	Fat
I+26	+018
SC	\$B
I-.03	+49.97

Right Time family. Top 20% Milk. Top 25% CW EPD.



51 Southern Mile High 85433 **F:G -.37**
 DOB: 10/22/2008 Reg: +16543968 Tattoo: 85433

BON VIEW NEW DESIGN 1407 B/R NEW DESIGN 036
 RIVERBEND MILE HIGH 3718 BON VIEW PRIDE 664
 14522407 G A R PRECISION 1919 G A R PRECISION 1680
 BON VIEW NEW DESIGN 878 B/R NEW DESIGN 036
 E F FOREVER LADY 1255 BON VIEW GAMMER 85
 +14082059 E F FOREVER LADY 5102 TEHAMA BANDO 155
 S V F FOREVER LADY 1120

BW	Adj WW	Adj YW	SC	Adj REA	Adj IMF
77	657	1022	34	12.9	4.86

BW	CW
I+2.1	+19
WW	Marb
I+40	+74
YW	RE
I+80	+35
Milk	Fat
I+36	+011
SC	\$B
I+.26	+60.61

Strong maternal pedigree. 106 IMF ratio. 108 RE ratio. Top 1% Milk. Top 10% Marb, \$Grid and \$Beef. Top 15% RE. Top 20% CW.

52 Southern Mile High 86441 **F:G**
 DOB: 12/3/2008 Reg: +16556230 Tattoo: 86441

BON VIEW NEW DESIGN 1407 B/R NEW DESIGN 036
 RIVERBEND MILE HIGH 3718 BON VIEW PRIDE 664
 14522407 G A R PRECISION 1919 G A R PRECISION 1680
 G A R PINNACLE G A R EXT 544
 R F PINNACLE 0223 G A R PRECISION 1680
 13856061 G A R EXT 2114
 G A R EXT 4206 N BAR EMULATION EXT
 G A R 6807 TRAVELER 1432

BW	Adj WW	Adj YW	SC	Adj REA	Adj IMF
72	759	1122	33.5	14.1	5.97

BW	CW
I+3.0	+36
WW	Marb
I+44	+93
YW	RE
I+88	+56
Milk	Fat
I+27	+048
SC	\$B
I+.06	+67.84

Predestined family. 112 IMF ratio. 109 RE ratio. Top 1% CW and \$Beef. Top 2% Marb and RE. Top 10% Milk. Top 15% \$Grid.

53 Southern Mile High 91461 **F:G -.24**
 DOB: 2/15/2009 Reg: 16589556 Tattoo: 91461

BON VIEW NEW DESIGN 1407 B/R NEW DESIGN 036
 RIVERBEND MILE HIGH 3718 BON VIEW PRIDE 664
 14522407 G A R PRECISION 1919 G A R PRECISION 1680
 RITO 616 OF 4B20 6807 G A R EXT 544
 BOHI RITA 965 D H D TRAVELER 6807
 +15292710 G A R PRECISION 810 RITA 4B20 OF 0FB1 BANDO
 G A R PRECISION 1680
 G A R EXT 614

BW	Adj WW	Adj YW	SC	Adj REA	Adj IMF
76	700	1100	31.64	13.8	5.25

BW	CW
I+1.8	+22
WW	Marb
I+47	+69
YW	RE
I+85	+46
Milk	Fat
I+32	+007
SC	\$B
I-.13	+63.14

107 RE ratio. Top 1% Milk EPD. Top 4% \$Beef. Top 10% CW, Marb, RE and \$Grid. Top 25% \$Wean.

54 Southern Total 85061 **F:G -.66**
 DOB: 9/14/2008 Reg: +16539757 Tattoo: 85061

BON VIEW NEW DESIGN 208 B/R NEW DESIGN 036
 TC TOTAL 410 BON VIEW ERICA 443
 14844711 TC ERICA EILEEN 2047 TWIN VALLEY PRECISION E161
 BW/QHF BLACKCAP LAD TC ERICA EILEEN 5116
 QUAKER HILL QUEEN 114 SVF GDAR 216 LTD
 #14070908 ANKONY QUEEN Q H F R981 O C C BLACKCAP 740C
 RITO 2H12 OF 2036 RITO 9J9
 ANKONY QUEEN Y6251

BW	Adj WW	Adj YW	SC	Adj REA	Adj IMF
79	805	1218	32.5	13.1	3.50

BW	CW
I+3.1	+26
WW	Marb
I+62	+36
YW	RE
I+110	+36
Milk	Fat
I+23	+014
SC	\$B
I-.20	+57.34

Objective 3J15 family. 110 RE ratio. Top 4% WW, YW, CW, \$Wean and \$Feedlot. Top 10% \$Beef. Top 15% RE.

55 Southern Ideal 86194 **F:G -.44**
 DOB: 11/12/2008 Reg: +16479749 Tattoo: 86194

S S OBJECTIVE T510 OT26 S S TRAVELER 6807 T510
 IDEAL 4355 OF OT26 2440 S S MISS RITA R011 7R8
 14779044 IDEAL 2440 OF 7407 7275 IDEAL 7407 OF 1418 4465
 IDEAL 7275 OF 809 1470
 G A R RETAIL PRODUCT G A R PRECISION 1680
 SOUTHERN 2409 RITA 3335 G A R EXT 4927
 +15226313 G A R PRIME TIME 2409 GARDENS PRIME TIME
 G A R EXT 327

BW	Adj WW	Adj YW	SC	Adj REA	Adj IMF
72	808	1237	34	11.3	5.96

BW	CW
I+2.0	+25
WW	Marb
I+54	+67
YW	RE
I+93	+07
Milk	Fat
I+31	+002
SC	\$B
	+60.36

111 IMF ratio. Top 3% Milk and CW. Top 10% Marb and \$Beef. Top 15% WW and \$Wean. Top 25% YW and \$Grid.

56 Southern Revolution 91252 [AMC] **F:G .17**
 DOB: 1/25/2009 Reg: +16696691 Tattoo: 91252

S S OBJECTIVE T510 OT26 S S TRAVELER 6807 T510
 IDEAL 4355 OF OT26 2440 S S MISS RITA R011 7R8
 14779044 IDEAL 2440 OF 7407 7275 IDEAL 7407 OF 1418 4465
 IDEAL 7275 OF 809 1470
 BON VIEW NEW DESIGN 1407 B/R NEW DESIGN 036
 SOUTHERN BLACKBIRD 4259 BON VIEW PRIDE 664
 +14921335 DAVIS YR BLACKBIRD 558H G A R PRECISION 1680
 G A R TRAVELER 760

BW	Adj WW	Adj YW	SC	Adj REA	Adj IMF
73	675	1179	31.8	12.1	5.85

BW	CW
I+2.3	+21
WW	Marb
I+59	+92
YW	RE
I+95	+28
Milk	Fat
I+33	+007
SC	\$B
I-.03	+65.56

122 IMF ratio. Top 2% Milk, Marb and \$Beef, 5% WW and \$Wean. Top 25% CED, YW, CW, and RE.

Southern Pendleton 91540						F:G -.31
57	DOB: 2/18/2009	Reg: +16627867	Tattoo: 91540			
HARB PENDLETON 765 JH 15313140	S A V FINAL ANSWER 0035	SITZ TRAVELER 8180	BW	CW		
	H A R B BLACK LADY 375 JH	S A V EMULOUS 8145	I+1.9	+18		
	GT MAXIMUM	H A R B HIGH PLAINS 975 JH	WW	Marb		
	WOODHILL GAMMER 145L-229P	H A R B BLACK LADY 073 JH	I+59	+24		
WOODHILL GAMMER 145L-229P +14792037	WOODHILL GAMMER 85-145L	SCOTCH CAP	YW	RE		
		GT MISS TRAVELER 58	I+106	+06		
		B C C BUSHWACKER 41-93	Milk	Fat		
		BON VIEW GAMMER 85	I+22	+053		
			SC	\$B		
			I+.37	+39.40		
BW	Adj WW	Adj YW	SC	Adj REA	Adj IMF	
65	650	1093	34	12.6	4.47	

Calving ease with growth. Top 5% WW, YW and \$Feedlot. Top 15% CED. Top 20% CW. Top 25% \$Wean.

Southern Pendleton 91546						F:G -.50
58	DOB: 2/20/2009	Reg: +16603217	Tattoo: 91546			
HARB PENDLETON 765 JH 15313140	S A V FINAL ANSWER 0035	SITZ TRAVELER 8180	BW	CW		
	H A R B BLACK LADY 375 JH	S A V EMULOUS 8145	I+.2	+21		
	G A R RETAIL PRODUCT	H A R B HIGH PLAINS 975 JH	WW	Marb		
	SOUTHERN 2409 RITA 3335	H A R B BLACK LADY 073 JH	I+48	+47		
SOUTHERN 2409 RITA 3335 +15226313	G A R PRIME TIME 2409	G A R PRECISION 1680	YW	RE		
		G A R EXT 4927	I+94	+03		
		GARDENS PRIME TIME	Milk	Fat		
		G A R EXT 327	I+27	+039		
			SC	\$B		
			I+1.24	+48.25		
BW	Adj WW	Adj YW	SC	Adj REA	Adj IMF	
83	692	1252	43.6	13.0	5.10	

Calving ease with growth. Top 3% CED EPD. Top 10% Milk and CW. Top 15% BW. Top 20% YW and \$Feedlot.

Southern Pendleton 94045						F:G -.47
59	DOB: 8/16/2009	Reg: +16696365	Tattoo: 94045			
HARB PENDLETON 765 JH 15313140	S A V FINAL ANSWER 0035	SITZ TRAVELER 8180	BW	CW		
	H A R B BLACK LADY 375 JH	S A V EMULOUS 8145	I+1.3	I+19		
	BW/QHF BLACKCAP LAD	H A R B HIGH PLAINS 975 JH	WW	Marb		
	QUAKER HILL QUEEN 114	H A R B BLACK LADY 073 JH	I+56	I+.20		
QUAKER HILL QUEEN 114 #14070908	ANKONY QUEEN Q H F R981	SVF GDAR 216 LTD	YW	RE		
		O C C BLACKCAP 740C	I+101	I+.03		
		RITO 2H12 OF 2036 RITO 9J9	Milk	Fat		
		ANKONY QUEEN Y6251	I+20	I+.040		
			SC	\$B		
			I-.16	+38.62		
BW	Adj WW	Adj YW	SC	Adj REA	Adj IMF	
68	630		34			

Maternal brother to Quaker Hill Objective 3J15. Big spread bull. Top 10% for WW, YW and \$Feedlot. Top 15% CED. Top 25% CW and \$Wean.



Southern All Around 94064						F:G -.27
60	DOB: 8/18/2009	Reg: 16696367	Tattoo: 94064			
CONNEALY ALL AROUND 15490811	CONNEALY WHITMAN	BON VIEW NEW DESIGN 208	BW	CW		
	ENTRUST OF CONANGA 894	ELLA TINA OF CONANGA 989	I+2.0	I+16		
	BON VIEW NEW DESIGN 1407	C R A BEXTOR 872 5205 608	WW	Marb		
	G A R 1407 NEW DESIGN H184	ENDALLA OF CONANGA 4860	I+47	I+.88		
G A R 1407 NEW DESIGN H184 +14800713	G A R PRECISION 4529	B/R NEW DESIGN 036	YW	RE		
		BON VIEW PRIDE 664	I+84	I+.26		
		G A R PRECISION 1680	Milk	Fat		
		G A R EXT 2114	I+26	I+.001		
			SC	\$B		
			I+.03	+61.87		
BW	Adj WW	Adj YW	SC	Adj REA	Adj IMF	
74	649		31			

Top 2% Marb, 5% \$Beef, 20% Milk.

Southern All Around 95023						F:G -.15
61	DOB: 9/5/2009	Reg: 16697445	Tattoo: 95023			
CONNEALY ALL AROUND 15490811	CONNEALY WHITMAN	BON VIEW NEW DESIGN 208	BW	CW		
	ENTRUST OF CONANGA 894	ELLA TINA OF CONANGA 989	I+1.3	I+24		
	G A R PREDESTINED	C R A BEXTOR 872 5205 608	WW	Marb		
	SOUTHERN BLACKCAP 72120	ENDALLA OF CONANGA	I+57	I+.94		
SOUTHERN BLACKCAP 72120 +16025651	3H SOUTHERN BLACKCAP 2015	B/R NEW DESIGN 036	YW	RE		
		G A R EXT 4206	I+99	I+.41		
		BT DIRECTION 65D	Milk	Fat		
		G A R PRECISION 2536	I+27	I+.014		
			SC	\$B		
BW	Adj WW	Adj YW	SC	Adj REA	Adj IMF	
61	631		33			

Calving ease with growth and carcass merit. Top 1% \$Beef, 2% Marb, 5% CW. Top 10% WW, Milk, RE and \$Wean. Top 15% CED, YW and \$Feedlot.

Southern All Around 95308						F:G -.34
62	DOB: 10/2/2009	Reg: 16697446	Tattoo: 95308			
CONNEALY ALL AROUND 15490811	CONNEALY WHITMAN	BON VIEW NEW DESIGN 208	BW	CW		
	ENTRUST OF CONANGA 894	ELLA TINA OF CONANGA 989	I+3.3	I+28		
	BR MIDLAND	C R A BEXTOR 872 5205 608	WW	Marb		
	CSP BLACKCAP EMPRESS R001	ENDALLA OF CONANGA 4860	I+58	I+.85		
CSP BLACKCAP EMPRESS R001 +15079546	B/R BLACKCAP EMPRESS 558	TWIN VALLEY PRECISION E161	YW	RE		
		BR ROYAL LASS 7036-19	I+99	I+.49		
		BON VIEW BANDO 598	Milk	Fat		
		B/R BLACKCAP EMPRESS 76	I+22	I+.018		
			SC	\$B		
			I+.37	+69.48		
BW	Adj WW	Adj YW	SC	Adj REA	Adj IMF	
76	666		31			

From the same family that produced B/R Destination 928. Top 1% \$Beef, 3% CW and Marb, 4% RE, 10% WW. Top 15% YW and \$Feedlot.

Southern Analyst 91147 [NHC]						F:G -.22
63	DOB: 1/19/2009	Reg: +16694712	Tattoo: 91147			
DR J ANALYST M250 +14292649	B C C BUSHWACKER 41-93	PARAMONT AMBUSH 2172	BW	CW		
	G A R PRECISION 706	R C ANITA T BANDO 918903		+2		
	RITO 112 OF 2536 RITO 616	G A R PRECISION 1680	WW	Marb		
	G A R NEW DESIGN G169	G A R EXT 2114		+57		
HCC RITA 5065 +15141658		RITO 616 OF 4820 6807	YW	RE		
		G A R PRECISION 2536		+26		
		B/R NEW DESIGN 036	Milk	Fat		
		G A R SLEEP EASY 1074		+030		
			SC	\$B		
			I+.10			
BW	Adj WW	Adj YW	SC	Adj REA	Adj IMF	
70	675	1157	37.6	12.6	5.05	

Top 20% Marb.

64 Southern Analyst 91293 **F:G -.18**
 DOB: 1/25/2009 Reg: +16626695 Tattoo: 91293

DR J ANALYST M250
 +14292649

HCC RITA 5065
 +15141658

B C C BUSHWACKER 41-93
 G A R PRECISION 706
 RITO 112 OF 2536 RITO 616
 G A R NEW DESIGN G169

PARAMONT AMBUSH 2172
 R C ANITA T BANDO 918903
 G A R PRECISION 1680
 G A R EXT 2114
 RITO 616 OF 4B20 6807
 G A R PRECISION 2536
 B/R NEW DESIGN 036
 G A R SLEEP EASY 1074

BW	CW
	+3
WW	Marb
	+.61
YW	RE
	+.44
Milk	Fat
	+.008
SC	\$B

BW	Adj WW	Adj YW	SC	Adj REA	Adj IMF
76	676	1151	34	15.2	5.41

112 RE ratio. Top 10% RE EPD. Top 15% Marb.

65 Southern Analyst 94070 **F:G -.07**
 DOB: 8/19/2009 Reg: +16696368 Tattoo: 94070

DR J ANALYST M250
 +14292649

RCK ISABEL 339N
 +15058355

B C C BUSHWACKER 41-93
 G A R PRECISION 706
 G A R PINNACLE
 L B 6807 ISABEL 339

PARAMONT AMBUSH 2172
 R C ANITA T BANDO 918903
 G A R PRECISION 1680
 G A R EXT 2114
 G A R PRECISION 1680
 G A R EXT 2114
 D H D TRAVELER 6807
 L B E31 ISABEL 168

BW	CW
I+2.4	I+10
WW	Marb
I+53	I+.72
YW	RE
I+93	I+.45
Milk	Fat
I+28	I+.037
SC	\$B
I-.15	+55.35

BW	Adj WW	Adj YW	SC	Adj REA	Adj IMF
72	636		33		

Dam is a full sister to Protégé. Top 10% Milk, Marb and RE. Top 20% WW, \$Wean and \$Beef. Top 25% YW.

66 Southern Analyst 95013 **F:G -.02**
 DOB: 9/4/2009 Reg: 16697398 Tattoo: 95013

DR J ANALYST M250
 +14292649

EF WIX 7361
 16004735

B C C BUSHWACKER 41-93
 G A R PRECISION 706
 S S OBJECTIVE T510 OT26
 EF WIX 5223

PARAMONT AMBUSH 2172
 R C ANITA T BANDO 918903
 G A R PRECISION 1680
 G A R EXT 2114
 S S TRAVELER 6807 T510
 S S MISS RITA R011 7R8
 CONNEALY LEAD ON
 EF MISS WIX 3089

BW	CW
I+.8	I+5
WW	Marb
I+00	I+.59
YW	RE
I+108	I+.41
Milk	Fat
I+29	I+.026
SC	\$B
	+52.52

BW	Adj WW	Adj YW	SC	Adj REA	Adj IMF
70	672		30		

Calving ease and growth with carcass merit. Top 1% WW, 3% YW and \$Wean. Top 5% Milk and \$Feedlot. Top 10% RE, 15% CED and Marb, 20% BW. Top 25% \$Beef.

67 Southern Daybreak 95259 **F:G -.05**
 DOB: 9/28/2009 Reg: 16701824 Tattoo: 95259

MCC DAYBREAK
 14777016

SOUTHERN ERICA 75021
 +16109944

BOYD NEW DAY 8005
 MCC MISS FOCUS 134
 G A R RETAIL PRODUCT
 C A MISS POWER FIX 308

A A R NEW TREND
 S V F FOREVER LADY 57D
 S A F FOCUS OF E R
 M C C MISS CHIEF 519
 G A R PRECISION 1680
 G A R EXT 4927
 S A F POWER FIX
 C A LADY EIGHT 1015

BW	CW
-.8	I+14
WW	Marb
+52	I+.43
YW	RE
+94	I+.35
Milk	Fat
+19	I+.005
SC	\$B
	+52.51

BW	Adj WW	Adj YW	SC	Adj REA	Adj IMF
56	600		32		

From the same family that produced Future Direction. Calving ease with growth. Top 2% CED, 10% BW. Top 15% RE, 20% WW, YW, \$Wean and \$Beef.

68 Southern Rito 92096 [AMC] **F:G .11**
 DOB: 3/11/2009 Reg: 16694722 Tattoo: 92096

RITO 658 OF 2536 SA
 +15445241

SOUTHERN BLACKBIRD 4908
 15031451

SITZ ALLIANCE 6595
 G A R PRECISION 2536
 C A FUTURE DIRECTION 5321
 SOUTHERN BLACKBIRD 2713

SITZ TRAVELER 8180
 SITZ BARBARAMERE JET 2698
 G A R PRECISION 1680
 G A R EXT 2104
 G A R PRECISION 1680
 C A MISS POWER FIX 308
 BON VIEW NEW DESIGN 1407
 BALDRIDGE BLACKBIRD 22E

BW	CW
+1.0	I+20
WW	Marb
+55	I+.52
YW	RE
+96	I+.13
Milk	Fat
+29	I+.043
SC	\$B
	+50.36

BW	Adj WW	Adj YW	SC	Adj REA	Adj IMF
75	725	1288	41.3	13.5	5.90

Top 4% Milk. Top 10% \$Wean. Top 15% CED, WW and CW. Top 20% YW, Marb and \$Feedlot. Top 25% \$Beef.



69 Southern Rito 95334 **F:G .45**
 DOB: 10/7/2009 Reg: 16696370 Tattoo: 95334

RITO 658 OF 2536 SA
 +15445241

SOUTHERN BLACKCAP 0165
 +14995459

SITZ ALLIANCE 6595
 G A R PRECISION 2536
 BR MIDLAND
 SOUTHERN BLACKCAP 3104

SITZ TRAVELER 8180
 SITZ BARBARAMERE JET 2698
 G A R PRECISION 1680
 G A R EXT 2104
 TWIN VALLEY PRECISION E161
 BR ROYAL LASS 7036-19
 NEROCO 9878
 G A R EXT 2104

BW	CW
+3.8	I+13
WW	Marb
+48	I+.34
YW	RE
+88	I+.01
Milk	Fat
+24	I+.040
SC	\$B
	+38.79

BW	Adj WW	Adj YW	SC	Adj REA	Adj IMF
82	645		33		

Comes from the famous Blackcap family known for added value on both sides of his pedigree.

70 Southern Rito 91432 **F:G .09**
 DOB: 2/9/2009 Reg: 16576903 Tattoo: 91432

RITO 6FA7 OF RITA 2V6 FD
 +15498453

SOUTHERN PRECISION 5149
 +14991833

C A FUTURE DIRECTION 5321
 RITA 2V6 OF 2536 1407
 K C F BENNETT COALITION SCC

G A R PRECISION 1680
 C A MISS POWER FIX 308
 BON VIEW NEW DESIGN 1407
 G A R PRECISION 2536
 SITZ ALLIANCE 6595
 PLEASANT PILL OF CONANGA
 G A R PRECISION 1680
 G A R TRAVELER 2421

BW	CW
+2.1	+17
WW	Marb
+43	+93
YW	RE
+80	+18
Milk	Fat
+25	+0.22
SC	\$B
I+.14	+59.07

BW	Adj WW	Adj YW	SC	Adj REA	Adj IMF
79	611	1089	36.4	11.6	7.15

Expectation family. 129 IMF ratio. Top 2% Marb EPD. Top 10% \$Grid and \$Beef. Top 25% Milk and CW.

71 Southern Predestined 92036 [NHC] **F:G -26**
 DOB: 3/3/2009 Reg: 16694721 Tattoo: 92036

G A R PREDESTINED		B/R NEW DESIGN 036		BW	CW
SOUTHERN PREDESTINED 6865		G A R EXT 4206		+1.6	+14
+15247103		BT DIRECTION 65D		WW	Marb
3H SOUTHERN BLACKCAP 2015		G A R PRECISION 2536		+54	+1.50
EXAR NEW LOOK 2971		BON VIEW NEW DESIGN 1407		YW	RE
SOUTHERN BLACKCAP 7955		N BAR PRIMROSE 2424		+98	+1.25
+15302355		TWIN VALLEY PRECISION E161		Milk	Fat
A PLUS BLACKCAP 2037		A PLUS BLACKCAP 9220		+29	+1.005
				SC	\$B
					+54.37

BW	Adj WW	Adj YW	SC	Adj REA	Adj IMF
70	819	1318	36.2	14.1	4.38

Top 5% Milk. Top 15% WW, YW and \$Feedlot. Top 20% \$Wean and \$Beef. Top 25% Marb.

72 Southern Predestined 92082 **F:G -17**
 DOB: 3/9/2009 Reg: 16576905 Tattoo: 92082

G A R PREDESTINED		B/R NEW DESIGN 036		BW	CW
SOUTHERN PREDESTINED 6865		G A R EXT 4206		+2.9	+25
+15247103		BT DIRECTION 65D		WW	Marb
3H SOUTHERN BLACKCAP 2015		G A R PRECISION 2536		+60	+4.3
S A V 8180 TRAVELER 004		SITZ TRAVELER 8180		YW	RE
SOUTHERN MISS BOBBIE 9315		BOYD FOREVER LADY 8003		+108	+2.6
15380441		S A F 598 BANDO 5175		Milk	Fat
S A V MISS BOBBIE 1178		S A V MISS BOBBIE 6216		+26	+0.043
				SC	\$B
				-1.07	+53.94

BW	Adj WW	Adj YW	SC	Adj REA	Adj IMF
74	771	1299	34.7	15.0	4.87

106 RE ratio. Top 3% WW, YW and \$Feedlot. Top 4% CW. Top 20% Milk and \$Beef.

73 Southern Retail Product 91204 **F:G -10**
 DOB: 1/22/2009 Reg: +16627700 Tattoo: 91204

G A R PRECISION 1680		TEHAMA BANDO 155		BW	CW
G A R RETAIL PRODUCT		9J9 G A R 856		+1.6	-1
#13395329		N BAR EMULATION EXT		WW	Marb
G A R EXT 4927		G A R TRAVELER 641		+1.44	+3.5
NEROCO 9878		B/R NEW DESIGN 036		YW	RE
SOUTHERN BLACKCAP 3104		MILL COULEE BARBARA 031		+1.83	-0.7
14688486		N BAR EMULATION EXT		Milk	Fat
G A R EXT 2104		G A R SCOTCH CAP 867		+1.25	-0.15
				SC	\$B
				+1.61	+34.26

BW	Adj WW	Adj YW	SC	Adj REA	Adj IMF
79	602	1008	34	10.4	5.38

Will make great replacements. Top 25% Milk EPD.

74 Southern Retail Product 91216 **F:G -11**
 DOB: 1/22/2009 Reg: +16603204 Tattoo: 91216

G A R PRECISION 1680		TEHAMA BANDO 155		BW	CW
G A R RETAIL PRODUCT		9J9 G A R 856		+1.6	+9
#13395329		N BAR EMULATION EXT		WW	Marb
G A R EXT 4927		G A R TRAVELER 641		+1.44	+4.4
NEROCO 9878		B/R NEW DESIGN 036		YW	RE
SOUTHERN BLACKCAP 3104		MILL COULEE BARBARA 031		+1.83	-0.5
14688486		N BAR EMULATION EXT		Milk	Fat
G A R EXT 2104		G A R SCOTCH CAP 867		+1.25	+0.010
				SC	\$B
				-1.19	+42.24

BW	Adj WW	Adj YW	SC	Adj REA	Adj IMF
79	668	1335	30.7	11.9	6.22

Will make great replacements! 108 IMF ratio. Top 25% Milk EPD.

75 Southern Retail Product 91291 **F:G -09**
 DOB: 1/25/2009 Reg: +16627701 Tattoo: 91291

G A R PRECISION 1680		TEHAMA BANDO 155		BW	CW
G A R RETAIL PRODUCT		9J9 G A R 856		+1.6	+2
#13395329		N BAR EMULATION EXT		WW	Marb
G A R EXT 4927		G A R TRAVELER 641		+1.44	+3.8
NEROCO 9878		B/R NEW DESIGN 036		YW	RE
SOUTHERN BLACKCAP 3104		MILL COULEE BARBARA 031		+1.83	+0.4
14688486		N BAR EMULATION EXT		Milk	Fat
G A R EXT 2104		G A R SCOTCH CAP 867		+1.25	-0.02
				SC	\$B
				+1.61	+37.76

BW	Adj WW	Adj YW	SC	Adj REA	Adj IMF
74	597	1119	33.5	12.4	5.71

Will make great replacements. Top 25% Milk EPD.

76 Cattle For Christ 8600 of GT17 **F:G -02**
 DOB: 11/8/2008 Reg: 16428016 Tattoo: 8600

GT SHEAR FORCE		N BAR PRIME TIME D806		BW	CW
SOUTHERN GT SPECIAL FORCE 17		GT SISKIN 106		+2.2	+17
15497150		GT METRO		WW	Marb
GT EVERGREEN 83		GT EVERGREEN 676		+63	+7.0
BR MIDLAND		TWIN VALLEY PRECISION E161		YW	RE
SOUTHERN BLACKBIRD 6981		BR ROYAL LASS 7036-19		+102	+3.5
+15983125		BON VIEW NEW DESIGN 1407		Milk	Fat
SOUTHERN BLACKBIRD 4259		DAVIS YR BLACKBIRD 558H		+20	+0.025
				SC	\$B
				+7.0	+60.07

BW	Adj WW	Adj YW	SC	Adj REA	Adj IMF
77	682	872	36.2	9.6	3.18

Powerful herd sire prospect. Top 2% WW. Top 10% YW, Marb, \$Wean, \$Grid and \$Beef. Top 15% RE and \$Feedlot. Top 25% CW.

77 Southern Special Force 91345 **F:G .32**
 DOB: 1/30/2009 Reg: 16622441 Tattoo: 91345

GT SHEAR FORCE		N BAR PRIME TIME D806		BW	CW
SOUTHERN GT SPECIAL FORCE 17		GT SISKIN 106		+2.0	+15
15497150		GT METRO		WW	Marb
GT EVERGREEN 83		GT EVERGREEN 676		+63	+5.2
TWIN VALLEY PRECISION E161		G A R PRECISION 1680		YW	RE
K C F MISS E161 P266		W C C BLACKCAP C9		+109	+4.0
+15040630		N BAR EMULATION EXT		Milk	Fat
POW OF CONANGA 677		HYANNIS H R 628		+21	+0.029
				SC	\$B
					+56.52

BW	Adj WW	Adj YW	SC	Adj REA	Adj IMF
76	724	1220	36	14.4	6.68

101 IMF ratio. 104 RE ratio. Top 2% WW and YW. Top 4% \$Feedlot. Top 10% RE. Top 15% \$Wean and \$Beef. Top 20% Marb.

78 Southern On Board 91518 **F:G -27**
 DOB: 2/17/2009 Reg: +16628418 Tattoo: 91518

BOYD ON TARGET 1083		S A F 598 BANDO 5175		BW	CW
QUAKER HILL ON BOARD 6BT2		BOYD FOREVER LADY 7095		+3.0	+17
15601884		BW/QHF BLACKCAP LAD		WW	Marb
QUAKER HILL QUEEN 114		ANKONY QUEEN Q H F R981		+58	+3.5
EXAR NEW LOOK 2971		BON VIEW NEW DESIGN 1407		YW	RE
V A R SUSANNA 5258		N BAR PRIMROSE 2424		+102	+2.6
15177915		TWIN VALLEY PRECISION E161		Milk	Fat
VAR SUSANNA 3239		V A R SUSANNA 8131		+23	+0.001
				SC	\$B
					+52.20

BW	Adj WW	Adj YW	SC	Adj REA	Adj IMF
82	636	1119	35	12.4	5.23

Top 10% WW, YW and \$Feedlot. Top 25% CW and \$Beef.

Southern Rito 91319						F:G -.67
79	DOB: 1/28/2009	Reg: +16611008	Tattoo: 91319			
RITO 112 OF 2536 RITO 616 #13793826	RITO 616 OF 4B20 6807	D H D TRAVELER 6807	BW	CW		
	G A R PRECISION 2536	RITA 4B20 OF 0FB1 BANDO	I+2.4	+14		
	BW/QHF BLACKCAP LAD	G A R PRECISION 1680	WW	Marb		
	ANKONY QUEEN Q H F R981	G A R EXT 2104	I+58	+36		
QUAKER HILL QUEEN 1L4 #14070908		SVF GDAR 216 LTD	YW	RE		
		O C C BLACKCAP 740C	I+101	+.01		
		RITO 2H12 OF 2036 RITO 9J9	Milk	Fat		
		ANKONY QUEEN Y6251	I+19	+.008		
BW	Adj WW	Adj YW	SC	Adj REA	Adj IMF	
79	607	1289	31.4	12.7	5.61	

Top 3% \$Wean. Top 10% WW and YW. Top 15% \$Feedlot.

Southern Dollar B 91321 [NHC]						F:G -.41
80	DOB: 1/29/2009	Reg: +16694718	Tattoo: 91321			
BASIN DOLLAR B 9916 +15371285	RIVERBEND MILE HIGH 3718	BON VIEW NEW DESIGN 1407	BW	CW		
	BASIN LUCY 804N	G A R PRECISION 1919	I+3.2	+34		
	BW/QHF BLACKCAP LAD	C A FUTURE DIRECTION 5321	WW	Marb		
	ANKONY QUEEN Q H F R981	BASIN LUCY 178E	I+53	+29		
QUAKER HILL QUEEN 1L4 #14070908		SVF GDAR 216 LTD	YW	RE		
		O C C BLACKCAP 740C	I+95	+33		
		RITO 2H12 OF 2036 RITO 9J9	Milk	Fat		
		ANKONY QUEEN Y6251	I+26	+.037		
BW	Adj WW	Adj YW	SC	Adj REA	Adj IMF	
80	762	1407	35.9	14.2	4.42	

Maternal brother to Quaker Hill Objective 3J15. 104 RE ratio. Top 1% CW. Top 20% WW,YW, Milk, RE and \$Feedlot. Top 25% \$Beef.

Southern Dollar B 91358						F:G -.44
81	DOB: 1/31/2009	Reg: +16611176	Tattoo: 91358			
BASIN DOLLAR B 9916 +15371285	RIVERBEND MILE HIGH 3718	BON VIEW NEW DESIGN 1407	BW	CW		
	BASIN LUCY 804N	G A R PRECISION 1919	I+3.2	+29		
	BW/QHF BLACKCAP LAD	C A FUTURE DIRECTION 5321	WW	Marb		
	ANKONY QUEEN Q H F R981	BASIN LUCY 178E	I+53	+34		
QUAKER HILL QUEEN 1L4 #14070908		SVF GDAR 216 LTD	YW	RE		
		O C C BLACKCAP 740C	I+95	+24		
		RITO 2H12 OF 2036 RITO 9J9	Milk	Fat		
		ANKONY QUEEN Y6251	I+26	+.021		
BW	Adj WW	Adj YW	SC	Adj REA	Adj IMF	
80	677	1291	36	12.6	4.93	

Outcross pedigree from a proven dam. Top 1% CW EPD. Top 15% Milk. Top 20% WW, YW, \$Feedlot and \$Beef.

Southern Pacemaker 91109 [NHC]						F:G -.27
82	DOB: 1/16/2009	Reg: 16694711	Tattoo: 91109			
BALDRIDGE SCC PACEMAKER P800 +14796284	BON VIEW NEW DESIGN 1407	B/R NEW DESIGN 036	BW	CW		
	G A R PRECISION 1019	BON VIEW PRIDE 664	-5	+22		
	C A FUTURE DIRECTION 5321	G A R PRECISION 1680	WW	Marb		
	THOMAS LUCY 9083	G A R EXT 755	I+44	+53		
SOUTHERN LUCY 0015 +14991839		G A R PRECISION 1680	YW	RE		
		C A MISS POWER FIX 308	I+81	+79		
		SCOTCH CAP	Milk	Fat		
		THOMAS STACKED LADY 6145	I+29	+.010		
BW	Adj WW	Adj YW	SC	Adj REA	Adj IMF	
65	721	1175	35.7	15.8	4.64	

114 RE ratio. Calving ease heifer bull. Top 1% RE, 4% Milk and \$Beef. Top 10% BW and CW. Top 20% CED, Marb and \$Wean.

Southern Crossover 91133 [AMC]						F:G -.07
83	DOB: 1/17/2009	Reg: +16697396	Tattoo: 91133			
BT CROSSOVER 758N +14509685	C A FUTURE DIRECTION 5321	G A R PRECISION 1680	BW	CW		
	BT ROYAL PRIDE 237G	C A MISS POWER FIX 308	I+1.7	+24		
	G A R PREDESTINED	O S U 6T6 ULTRA	WW	Marb		
	G A R PRECISION G242	BT ROYAL PRIDE 326A	I+50	+.97		
MTN MEADOW RITA R6084 +15244992		B/R NEW DESIGN 036	YW	RE		
		G A R EXT 4206	I+93	+.53		
		G A R PRECISION 1680	Milk	Fat		
		G A R EXT 2537	I+26	+.016		
BW	Adj WW	Adj YW	SC	Adj REA	Adj IMF	
84	691	1264	32.6	13.9	7.73	

134 IMF ratio, 102 RE ratio. Top 1% Marb and \$Beef, 5% CW and RE. Top 25% CED, YW, Milk and \$Feedlot.



Cattle For Christ 8016 of 4200						F:G .07
84	DOB: 10/23/2008	Reg: 16434683	Tattoo: 8016			
S A V NET WORTH 4200 14739204	S A V 8180 TRAVELER 004	SITZ TRAVELER 8180	BW	CW		
	S A V MAY 2410	BOYD FOREVER LADY 8003	+2.5	+19		
	RITO 112 OF 2536 RITO 616	S A F 598 BANDO 5175	WW	Marb		
	SOUTHERN BLACKCAP 6455	S A V MAY 6269	I+55	+.39		
		RITO 616 OF 4B20 6807	YW	RE		
		G A R PRECISION 2536	I+94	+.33		
		ROCKN D AMBUSH 1531	Milk	Fat		
		G A R EXT 2114	I+25	+.027		
BW	Adj WW	Adj YW	SC	Adj REA	Adj IMF	
73	621	759	35.2	8.4	1.83	

Top 15% WW. Top 20% YW, CW and RE. Top 25% Milk, \$Wean and \$Beef.

Southern New Worth 91224 [NHC]						F:G .06
85	DOB: 1/22/2009	Reg: +16694902	Tattoo: 91224			
S A V NET WORTH 4200 14739204	S A V 8180 TRAVELER 004	SITZ TRAVELER 8180	BW	CW		
	S A V MAY 2410	BOYD FOREVER LADY 8003		+14		
	BON VIEW NEW DESIGN 208	S A F 598 BANDO 5175	WW	Marb		
	G A R 208 NEW DESIGN H285	S A V MAY 6269	I+55	+.39		
		B/R NEW DESIGN 036	YW	RE		
		BON VIEW ERICA 443	I+94	+.39		
		G A R PRECISION 1680	Milk	Fat		
		G A R EXT 614	I+25	+.018		
BW	Adj WW	Adj YW	SC	Adj REA	Adj IMF	
74	620	1098	33.7	13.2	4.23	

From a family known for added value. Top 15% RE EPD.

86 Cattle For Christ 8608 of 8355 F:G -.01
 DOB: 11/11/2008 Reg: 16428011 Tattoo: 8608

SS OBJECTIVE T510 OT26		SS TRAVELER 6807 T510		BW	CW
G A R PERSPECTIVE		SS MISS RITA R011 7R8		+2.2	+17
15129749	G A R PRECISION 1193	G A R PRECISION 1680		WW	Marb
	WOODHILL FORESIGHT	G A R NEW DESIGN 1779		+52	+59
	PAPA FORTE 1921	BON VIEW GAMMER 85		YW	RE
SOUTHERN ERICA 6409	TWIN VALLEY PRECISION E161	SUMMITCREST ERICA G184		+91	+46
+15457424	BLACKJACKS ERICA 205			Milk	Fat
				+27	+0.02
				SC	\$B
				-12	+59.66

Top 10% Milk, RE, \$Grid and \$Beef. Top 15% Marb. Top 20% WW. Top 25% CW and \$Wean.

87 Southern Rito 85101 F:G .14
 DOB: 9/23/2008 Reg: 16542214 Tattoo: 85101

SS OBJECTIVE T510 OT26		SS TRAVELER 6807 T510		BW	CW
IDEAL 4355 OF OT26 2440		SS MISS RITA R011 7R8		+4	+5
14779044	IDEAL 2440 OF 7407 7275	IDEAL 7407 OF 1418 4465		WW	Marb
	B/R NEW DESIGN 323	IDEAL 7275 OF 809 1470		+48	+60
	B/R RUBY OF TIFFANY 155	B/R NEW DESIGN 036		YW	RE
TWIN VALLEY PAMELLA 7151	BASIN PAMELLA 676X	BASIN RAINMAKER D S 450U		+73	+19
+14415198		BASIN PAMELLA 6806		Milk	Fat
				+24	-.012
				SC	\$B
					+47.15

Future Direction family. 103 IMF ratio. 108 RE ratio. Top 2% Marb EPD. Top 4% \$Grid. Top 10% \$Beef. Top 15% RE. Top 25% Milk.

88 Southern All Around 85115 F:G -.03
 DOB: 9/25/2008 Reg: 16544007 Tattoo: 85115

CONNEALY WHITMAN		BON VIEW NEW DESIGN 208		BW	CW
CONNEALY ALL AROUND		ELLA TINA OF CONANGA 989		+3.6	+22
15490811	ENTRUST OF CONANGA 894	C R A BEXTOR 872 5205 608		WW	Marb
	G A R INTEGRITY	ENDALLA OF CONANGA 4860		+52	+74
	RITA 1194 OF 2536 RITO 616	BON VIEW NEW DESIGN 1407		YW	RE
SOUTHERN 1194 RITA 6435		G A R PRECISION 1019		+89	+37
+15247085		RITO 616 OF 4B20 6807		Milk	Fat
		G A R PRECISION 2536		+26	-.010
				SC	\$B
					+65.26

Top 2% \$Beef. Top 5% Marb and \$Grid. Top 10% CW. Top 15% RE. Top 20% WW and Milk.

89 Southern All Around 85120 F:G -.05
 DOB: 9/26/2008 Reg: 16544008 Tattoo: 85120

CONNEALY WHITMAN		BON VIEW NEW DESIGN 208		BW	CW
CONNEALY ALL AROUND		ELLA TINA OF CONANGA 989		+3.7	+25
15490811	ENTRUST OF CONANGA 894	C R A BEXTOR 872 5205 608		WW	Marb
	C A FUTURE DIRECTION 5321	ENDALLA OF CONANGA 4860		+45	+85
	TOEBBEN FOREVER LADY 097G	G A R PRECISION 1680		YW	RE
EF FOREVER LADY 4219		C A MISS POWER FIX 308		+88	+56
+14950374		D H D TRAVELER 6807		Milk	Fat
		S V F FOREVER LADY 57D		+23	-.003
				SC	\$B
					+70.05

Elite carcass sire. 118 IMF ratio. 106 RE ratio. Top 1% \$Grid and \$Beef. Top 3% Marb and RE. Top 4% CW.

90 Southern Total 85142 F:G .33
 DOB: 9/27/2008 Reg: 16545116 Tattoo: 85142

C A FUTURE DIRECTION 5321		G A R PRECISION 1680		BW	CW
ALC BIG EYE D09N		C A MISS POWER FIX 308		+3.3	+20
14560689	ALC HAZEL L12L	S V F BANDOLIER		WW	Marb
	RITO 112 OF 2536 RITO 616	ALC HAZEL K14H		+46	+58
	LIMESTONE GAMMER P578	RITO 616 OF 4B20 6807		YW	RE
LIMESTONE GAMMER S513		G A R PRECISION 2536		+88	+43
15419916		BON VIEW NEW DESIGN 1407		Milk	Fat
		BON VIEW GAMMER 233		+21	+0.019
				SC	\$B
					+58.72

Top 10% RE and \$Beef. Top 15% CW, Marb and \$Grid.

91 Southern Perspective 85230 F:G .15
 DOB: 10/4/2008 Reg: 16539764 Tattoo: 85230

SS OBJECTIVE T510 OT26		SS TRAVELER 6807 T510		BW	CW
G A R PERSPECTIVE		SS MISS RITA R011 7R8		+2.9	+18
15129749	G A R PRECISION 1193	G A R PRECISION 1680		WW	Marb
	BON VIEW NEW DESIGN 1407	G A R NEW DESIGN 1779		+43	+69
	G A R PRECISION 1919	B/R NEW DESIGN 036		YW	RE
RIVERBEND RITA R125		BON VIEW PRIDE 664		+87	+36
+14987940		G A R PRECISION 1680		Milk	Fat
		G A R EXT 544		+32	+0
				SC	\$B
				I-.58	+61.71

Mile High family. 102 IMF ratio. Top 1% Milk. Top 4% \$Beef. Top 10% Marb and \$Grid. Top 15% RE. Top 20% CW.

92 Southern Predestined 85318 F:G -.27
 DOB: 10/13/2008 Reg: +16539769 Tattoo: 85318

B/R NEW DESIGN 036		V D A R NEW TREND 315		BW	CW
G A R PREDESTINED		B/R BLACKCAP EMPRESS 76		I+3.2	+20
#13395344	G A R EXT 4206	N BAR EMULATION EXT		WW	Marb
	G A R RETAIL PRODUCT	G A R 6807 TRAVELER 1432		I+51	+68
	GARRISON ERICA 1661	G A R PRECISION 1680		YW	RE
THREE TREES ERICA R0409		G A R EXT 4927		I+95	+57
14993470		B/R NEW DESIGN 036		Milk	Fat
		TWIN VALLEY ERICA 225		I+31	+0.022
				SC	\$B
					+63.63

Top 3% Milk, RE and \$Beef. Top 10% Marb and \$Grid. Top 15% CW. Top 25% WW. YW and \$Feedlot.

93 Southern Raven 85345 F:G .34
 DOB: 10/16/2008 Reg: +16539770 Tattoo: 85345

B C MARATHON 7022		O C C KIRBY 633K		BW	CW
BC 7022 RAVEN 7965		GIBBET HILL MIGNONNE E37		I+3.0	+8
15034593	O C C BLACKBIRD 796F	O C C BONANZA 880B		WW	Marb
	TWIN VALLEY PRECISION E161	O C C BLACKBIRD 779A		I+42	+28
	B C C MISS CHEYENNE 41-94	G A R PRECISION 1680		YW	RE
MAPLE LANE ANITA 360		W C C BLACKCAP C9		I+76	+37
+14445398		PARAMONT AMBUSH 2172		Milk	Fat
		R C ANITA T BANDO 918903		I+19	+0.002
				SC	\$B
				I-.64	+41.08

Bushwacker family. Top 15% RE.

Southern Bextor 85447						F:G -.32
94	DOB: 10/22/2008	Reg: 16539772	Tattoo: 85447			
C R A BEXTOR 872 5205 608 #13009379	B A R EXT TRAVELER 205	N B A R EMULATION EXT	BW	CW		
	CRA LADY JAYE 608 498 S EASY	B A R QUEEN TRAVELER 3015	+1.3	+10		
	BR MIDLAND	G A R SLEEP EASY 1009	WW	Marb		
	SOUTHERN 272M BLACKCAP 4755	H H F 917 LADY 975 498	+54	+53		
+15358608	SOUTHERN 1407 BLACKCAP 272M	TWIN VALLEY PRECISION E161	YW	RE		
		BR ROYAL LASS 7036-19	+88	+36		
		BON VIEW NEW DESIGN 1407	Milk	Fat		
		RAB-GARMS PRECISION 4001H	+27	+013		
			SC	\$B		
				+51.11		
BW	Adj WW	Adj YW	SC	Adj REA	Adj IMF	
72	793	1019	35	10.9	3.49	

Calving ease sire. Top 3% \$Wean. Top 10% Milk. Top 15% WW, RE and \$Grid. Top 20% Marb. Top 25% CED and \$Beef.

Southern Predestined 85530						F:G -.48
95	DOB: 10/29/2008	Reg: +16541964	Tattoo: 85530			
G A R PREDESTINED #13395344	B/R NEW DESIGN 036	V D A R NEW TREND 315	BW	CW		
	G A R EXT 4206	B/R BLACKCAP EMPRESS 76	I+3.3	+21		
	BR MIDLAND	N B A R EMULATION EXT	WW	Marb		
	CSP BLACKCAP EMPRESS R001	G A R 6807 TRAVELER 1432	I+53	+72		
+15079546	B/R BLACKCAP EMPRESS 558	TWIN VALLEY PRECISION E161	YW	RE		
		BR ROYAL LASS 7036-19	I+97	+57		
		BON VIEW BANDO 598	Milk	Fat		
		B/R BLACKCAP EMPRESS 76	I+24	+036		
			SC	\$B		
				+63.42		
BW	Adj WW	Adj YW	SC	Adj REA	Adj IMF	
81	690	972	34	12.2	3.14	

103 RE ratio. Top 3% RE and \$Beef. Top 10% Marb and \$Grid. Top 15% YW, CW and \$Feedlot. Top 20% WW.

Southern P W 86436						F:G -.08
96	DOB: 12/2/2008	Reg: +16488835	Tattoo: 86436			
PINEBANK WAIGROUP 41/97 14959541	PINEBANK WAIG 31/95	PINEBANK WAIG 5/93	BW	CW		
	PINEBANK 639/88	PINEBANK WAIG 58/93	I+2.9	+17		
	TWIN VALLEY PRECISION E161	TUPURUPURU 838/86	WW	Marb		
	SOUTHERN DESIGN 3799	PINEBANK 663/85	I+43	-.09		
+14863465	G A R NEW DESIGN 1200	G A R PRECISION 1680	YW	RE		
		W C C BLACKCAP C9	I+78	+48		
		B/R NEW DESIGN 036	Milk	Fat		
		G A R PRECISION 2536	I+21	+007		
			SC	\$B		
				+31.41		
BW	Adj WW	Adj YW	SC	Adj REA	Adj IMF	
80	681	1059	32	14.1	2.45	

Outcross genetics. 109 RE ratio. Top 5% RE. Top 25% CW.

86525						F:G
97	DOB: 12/11/2008	Reg: n/a	Tattoo: 86525			
ANGUS BULL REG #			BW	CW		
			WW	Marb		
			YW	RE		
			Milk	Fat		
ANGUS COW REG #			SC	\$B		
			BW	Adj WW	Adj YW	SC
						Adj REA
						Adj IMF

Commercial Angus bull.



Southern Brangus

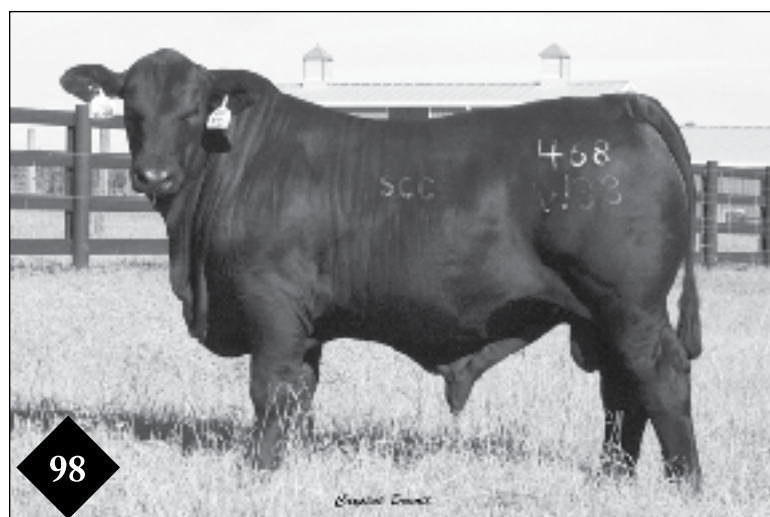
Special Pick on Lots 98 - 100

Selling 50% interest & shared possession in one of these lots.

If you are searching for the "Right Deal" to enhance your breeding program then look no further. This set of full brothers out of MC Real Deal 541R3 and Ms Brinks BS 607L11 468S77, is sure to get your attention. We are offering choice to the highest bidder. That is correct! The highest bidder will be able to pick their choice of these three full brothers. Because these brothers will only be 10 months old at sale time we are going to make this even easier on you, the top bidder does not have to make their final selection until the bulls reach 16 months of age. This will enable the new owner not only be able to see how the bulls mature but they will also have all of the bull's yearling data available to them. Southern will be selling half interest and shared possession in one of these future herd sires.

These bulls come out of one of the strongest cow families to exist in the Brangus business. Just look and you will find that 468L is their grand dam and 468G15 is their great-grand dam. To this day 468G15 is still the number two cow of the entire breed for REA and a daughter of hers is number one. This pedigree screams power and performance.

Then take a look at the sire, MC Real Deal. He is a John Wayne son that has been doing an outstanding job in the Blackwater program. Once again a line of cattle that is the Who's Who when you are talking about power and performance.



By combining these two bloodlines the way that Southern has they have created a truly unique breeding tool for many herds in the business today. For the last several years, Lead Gun sons and grandsons are the direction that most breeders have chosen to head. Well, here is the answer to how you can breed the daughters from those sires. It will be interesting to see how this new twist in genetics will be impacting the breed in the future.

Enough said about the bloodlines of these brothers, let's look at them. Study their EPDs and you will find that they rank in the top 1% to 4% for WW, YW and REA. They exhibit all of this performance without excess BW. Their actual birth weights ranged from 76#'s to 80#'s and their BW EPDs range from .6 to 1.0. Now this is a combination that is hard to come by.

It will truly be a difficult decision to make your selection. These full brothers are peas in a pod. This only shows the consistency of genetics that are being offered. As you step back and study each individual you will find that each one has a tremendous amount of thickness that follows along their spine and then carries down into their rear end and lower quarter. Once you have looked at just how thick these guys are you will notice the amount of rib shape and volume that each of them carries. These are NOT some tight-gutted, low performing critters! These are the kind that put pounds on the ground in their offspring! All of this frame and volume would not amount to much if there was not a lot of bone and foot to support all of this. Well do not worry, these brothers don't lack bone or foot. Study each of them and then make your decision on which one of these brothers will service your herd the best.

Southern Real Deal 468W38						SCC	
98	12/17/2009	R10174846	Polled	Gen: 5th	PHN: 468W38		
MC REAL DEAL 541R3 R10038652	TJM JOHN WAYNE 44L	WR DUKE 228/F				BW	SC
		MISS TJM TRANSFORMER 44H				.6	.6
	MB MS FREIGHT LINER 541K	MC FREIGHT LINER 2H10				WW	REA
		MS BB BRIGHT PROMISE 541H46				45	.74
	BRINKS BRIGHT SIDE 607L11	BRIGHT SIDE OF BRINKS 789G5				YW	IMF
MS BRINKS BS 607L11 468S77 R10067471		MISS BRINKS BIG EASY 607H10				70	-.01
		LEAD TIME OF BRINKS 795J4				Milk	Fat
	MISS BRINKS LEAD TIME 468L	MISS BRINKS CADENCE 468G15				1	.009
						TM	
						24	



Southern Real Deal 468W39						SCC
99	12/19/2009	R10174556	Polled	Gen: 5th	PHN: 468W39	
MC REAL DEAL 541R3 R10038652	TJM JOHN WAYNE 44L	WR DUKE 228/F				BW SC
		MISS TJM TRANSFORMER 44H				1.0 .6
	MB MS FREIGHT LINER 541K	MC FREIGHT LINER 2H10				WW REA
		MS BB BRIGHT PROMISE 541H46				40 .71
MS BRINKS BS 607L11 468S77 R10067471	BRINKS BRIGHT SIDE 607L11	BRIGHT SIDE OF BRINKS 789G5				YW IMF
		MISS BRINKS BIG EASY 607H10				69 -.05
	MISS BRINKS LEAD TIME 468L	LEAD TIME OF BRINKS 795J4				Milk Fat
		MISS BRINKS CADENCE 468G15				2 .007
						TM
						22



*It's your opportunity to
participate in the next great
chapter of the Brangus breed!*



Southern Real Deal 468W40						SCC
100	12/20/2009	R10174558	Polled	Gen: 5th	PHN: 468W50	
MC REAL DEAL 541R3 R10038652	TJM JOHN WAYNE 44L	WR DUKE 228/F				BW SC
		MISS TJM TRANSFORMER 44H				.7 .6
	MB MS FREIGHT LINER 541K	MC FREIGHT LINER 2H10				WW REA
		MS BB BRIGHT PROMISE 541H46				38 .71
MS BRINKS BS 607L11 468S77 R10067471	BRINKS BRIGHT SIDE 607L11	BRIGHT SIDE OF BRINKS 789G5				YW IMF
		MISS BRINKS BIG EASY 607H10				69 -.05
	MISS BRINKS LEAD TIME 468L	LEAD TIME OF BRINKS 795J4				Milk Fat
		MISS BRINKS CADENCE 468G15				3 .007
						TM
						22



Southern Griese 468W2						SCC
101	3/11/2009	R10154013	Polled	Gen: 5th	PHN: 468W2	
GRIESE OF BRINKS 803R27 R10034825	CEO OF BRINKS 99744	BRINKS CADENCE 13F	BW		SC	
	MS BRINKS ALI 803M	MISS BRINKS EASY STREET 99F3	-2.4		.6	
	BRIGHT SIDE OF BRINKS 789G5	ALLI OF BRINKS 209J2	WW		REA	
	MS BRINKS TRANSFORMER 803G	MISS BB BRIGHT PROMISE 789E14	26		.64	
MS BRINKS BRIGHT SIDE 468K8 R778370	MISS BRINKS CADENCE 468G15	TRANSFORMER OF BRINKS	YW		IMF	
		CADENCE OF BRINKS	48		.04	
		MISS BB NEW MACHO 468C	Milk		Fat	
			11		-.007	
			TM			
			24			
			BW		Adj WW	Adj YW
			69		720	1694*
			SC		Adj REA	Adj IMF
					14.77	4.563

A low birth weight high maternal herd sire prospect. This son of Griese of Brinks 803R27 is sure to catch your attention. As you can see from his picture he is a supper smooth made bull with plenty of middle, ample bone, and above average thickness. This is probably one of the best Griese sons to come to auction and he is sure to be a sale highlight. Study his balanced set of EPDs and you will see that super low BW EPD balanced with impressive growth numbers and a really solid milk number. If you are looking for a bull that you can put on heifers or on cows then this young herd sire must be on the top of your list. *Adj 452 day weight.



SCC Roberts Dickerson 201U						RR
102	11/19/2009	R10137970	Polled	Gen: 5th	PHN: 201U	
DICKERSON OF BRINKS 222R41 R10034973	SONAR OF BRINKS 607L18	ALI OF BRINKS 209J2	BW		SC	
	MS BRINKS DECADE 222N44	MISS BRINKS GUNNER 607G12	2.1		1.4	
	LEAD TIME OF BRINKS 795J4	DECADE OF BRINKS 209K26	WW		REA	
	MISS BRINKS LEAD TIME 201M	MS BB SPECIAL ADDITION 222H7	20		.28	
MS BRINKS LEAD TIME 201M R811034	MISS BRINKS COWBOY 201F13	TYPESETTER OF BRINKS 535G7	YW		IMF	
		MISS BRINKS CARRARA 795E8	47		.03	
		COWBOY OF BRINKS	Milk		Fat	
		MISS BRINKS MAILMAN 201D17	3		.003	
			TM			
			13			
			BW		Adj WW	Adj YW
			96		624	1206
			SC		Adj REA	Adj IMF
			37		12.13	4.319

This young bull has had many friends over the last few months. As people have come to look at the sale offering everyone always wants to know who he is. It is no wonder he looks the way he does. His half sister topped the Camp Cooley dispersion as an open heifer. The 201 cow family was always a strong line at Camp Cooley and it certainly is evident in this bull. The words that come to mind when looking him over are mass and power. He certainly has the ability to change a set of cows.

You must also keep in mind that this herd sire prospect offers something else unique. His pedigree. His outcross bloodline will be a perfect match to put on all of those daughters out of Lead Gun sons and Grandsons.



SCC Singletary 847W3						L&W
103	1/28/2009	R10134051	Polled	Gen: 4th	PHN: 847W3	
SINGLETARY OF BRINKS 675R R10004011	LEAD GUN OF BRINKS 222K14	CADENCE OF BRINKS	BW		SC	
	MS BRINKS UPPERCUT 209N11	MISS BB NEW BIG EASY 222E55	1.4		.8	
	WOW MR TARGET 833J5	UPPERCUT OF BRINKS 14J8	WW		REA	
	OKR MS HEADLINE NEWS 847G	MISS BB KANSAS JACK 209C2	26		.40	
L&W MISS TARGET 847N R9661775		WB TARGET 804D32	YW		IMF	
		MTG MS. TTT 833	48		.14	
		HEADLINES NEWS OF LA TERRE	Milk		Fat	
		WPH TINETTE 847W3	6		.004	
			TM			
			19			
			BW		Adj WW	Adj YW
			71		517	1096
			SC		Adj REA	Adj IMF
			35.8		13.92	3.001

One of the best Singletary sons to be offered this year. Truly complete from front to back and top to bottom. Study this bull in person or on video and you will agree that he is one of the most complete bulls you will see. All though it is no wonder he is so impressive, after all his dam 847N is a no miss donor for the L&W program. One of the things that is most impressive about this young sire is that for all of the mass this bull carries he still moves with the greatest of ease.

He carries a very balanced set of EPDs that will certainly impress. All indications are that his calves will come easy and grow quickly. This young sire also posted 1.2 square inches of REA per hundred weight at yearling. It is no wonder this bull looks like he is super thick. He is!



SCC IH Next Step 15W						IH
107	3/10/2009	R10136916	Polled	Gen: 5th	PHN: 15W	
SUHN'S NEXT STEP 331R7 R10015200	BURTIN'S TRANSFORMER 803G3	TRANSFORMER OF BRINKS	BW	SC		
	SUHN'S MS CADENCE 331M3	BURTIN'S MISS MILKYWAY 803E	1.3	.9		
	ANGELO OF BRINKS 489K4	CADENCE OF BRINKS	WW	REA		
	MS HCC HARRIETE 15K1	SUHN'S MISS PROMISE 331J12	26	.30		
SF MISS ANGELO 15N19 R9691748		PICASSO OF BRINKS 881F18	YW	IMF		
		MISS BB NEW EXACTO 489C	47	-.14		
		CCR UPDATE 314C	Milk	Fat		
		MS HARRY 15C1	19	-.005		
						TM
						32

You better pay attention to this young bull. He is the only Next Step son in the sale and certainly worth looking at. The Next Step progeny have been topping sales around the country for the past year and a certainly worthy of such an honor. If you look closer you will see that the dam of this young sire is out of Angelo of Brinks 489K4. By combining these two great bloodlines you are assured to add plenty of maternal merit to the offspring. This is also evidenced in his EPDs. He ranks in the top 2% of the breed for milk and 4% for Maternal. Not only does he have milk and maternal but he ranks in the top 30% for WW, YW, and SC. Certainly a bull to look at for heifers and or cows.



SCC Lead Gun 274S6 - 406W						L&W
108	3/8/2009	R10134621	Polled	Gen: 2nd	PHN: 406W	
SVF MR 274S6 R10052361	LEAD GUN OF BRINKS 222K14	CADENCE OF BRINKS	BW	SC		
	MISS JLS REVENUE 274N6	MISS BB NEW BIG EASY 222E55	-.6	.2		
	LEACHMAN SAUGHATCHEE 300K	MR BAR J REVENUE 161K5	WW	REA		
	MS BRINKS SAUGHATCHEE 406K6	SCR MS HOSS 274Y2	22	.26		
MS BRINKS SAUGHATCHEE 406K6 R781811		N BAR EMULATION EXT	YW	IMF		
		LEACHMAN B C 7100	34	.11		
		JJMC CORSO	Milk	Fat		
		MS BB PRECIOUS H406L	13	.002		
						TM
						24

This Lead Gun grandson has quite a set of numbers to back him. Look at that low BW, yet still strong growth numbers followed by an impressive milk and IMF number. He ranks in the top 15% of the breed for milk, top 20% for BW, Maternal, and IMF.

If you study this bulls pedigree you will see that his dam is a "summit cow". This is no easy task and can only be achieved by reaching certain plateaus of production. Fertility is built into this line of cattle.



SCC Lead Gun 21R3-110U2						RVR
109	12/31/2008	R10131390	Polled	Gen: 5th	PHN: 110U2	
MR LEAD N JOHN WAYNE 21R3 R10026626	LEAD GUN OF BRINKS 222K14	CADENCE OF BRINKS	BW	SC		
	WOW MS JOHN WAYNE 21N7	MISS BB NEW BIG EASY 222E55	-.2	.7		
	CCC SHADOW 980F11	TJM JOHN WAYNE 44L	WW	REA		
	OBF MISS 110F	WOW MS NEWSMAKER 21J	22	.27		
DP MS 110L3 R803577		ER SHADOW 23/1	YW	IMF		
		ER LADY XS 980B2	40	.06		
		OBF MAINLINE	Milk	Fat		
		BC LILLY 85Z	1	.06		
						TM
						12

This young herd sire combines two of the strongest bloodlines in the Brangus business, Lead Gun of Brinks 222K14 and TJM John Wayne 44L. As you study this bull it is easy to see that crossing these genetics worked! He is extremely thick down his top and as you follow the bull around you can see this thickness carries thru his rear end and into his stifle. You will also notice that he moves extremely easy and should have no problem cover lots of ground to follow those females.

Ranks in to 30% of the breed for BW.



SCC La Terre Webfort 8059						LTP
110	2/20/2009	UB10151144	Polled	Ultrablack	PHN: 8059	
PINE RIDGE KABOOM L025 EA15443425	BALDRIDGE KABOOM K243	JAUER 353 TRAVELER 589 27	BW	SC		
	LA TERRE PRIMROSE 374N	PLEASANTA OF CONANGA 736	.4			
	TRANSFORMER OF BRINKS	CA FUTURE DIRECTION 5321	WW	REA		
	MISS BRINKS COWBOY 675E17	SUMMIT CREST PRIMROSE 2J02	42			
CONNIE L8054 OF LA TERRE R726530		LINEMAN OF BRINKS 881A7	YW	IMF		
		MISS BB NEW EXACTO 784W	58			
		COWBOY OF BRINKS	Milk	Fat		
		MISS BB HOTLINE 675A14	1			
			TM			
			22			
BW	Adj WW	Adj YW	SC	Adj REA	Adj IMF	
78	676	1230		12.87	3.930	

This UltraBlack bull has had many friends all summer long. This is the first UltraBlack bull to sell at Southern Cattle Company and he certainly lives up to all of the hype. Just look at this bull! Not only does he exhibit all of the traits we look for like, thickness, depth of body, bone, ease of movement but he also has enough style for two bulls.

Now follow those numbers. Ranks in the top 2% of the breed for WW with a ratio of 107. Ranks in top 10% of the breed for YW with a ratio of 101 and top 30% for Maternal.



SCC Crochet Wako 529						LTP
111	2/23/2009	UB10151157	Polled	Ultrablack	PHN: 529	
LA TERRE NEW HORIZON BNS130	KMK BANDO 598 K215	BON VIEW BANDO 598	BW	SC		
	MISS 4L CHALLENGER 402J	BASIN ENCHANTRESS D14A	-.4			
	LUCYS BOY 01 OF LA TERRE	CHALLENGER OF BRINKS	WW	REA		
	CP CHADA 72/2	MISS 4L 402-5	25			
MS CONNIE 52 OF LA TERRE UB10042540		V D A R LUCYS BOY	YW	IMF		
		DEL RIVER LENA BELLE 398	57			
		NEW ERA OF BRINKS 541J37	Milk	Fat		
		CONNIE L8054 OF LA TERRE	2			
			TM			
			15			
BW	Adj WW	Adj YW	SC	Adj REA	Adj IMF	
74	577	1183		9.92	5.489	

Another UltraBlack that will certainly hold your attention.

Ranks in the top 15% of the breed for YW to ratio 109, top 25% for BW to ratio 97 and top 35% for WW to ratio 117.

This low BW yet growth packed bull will help to change lots of cattle in the next few years.

SCC Crochet Weapon 729						LTP
112	2/5/2009	UB10151138	Polled	Ultrablack	PHN: 729	
PINE RIDGE KABOOM L025 EA15443425	BALDRIDGE KABOOM K243	JAUER 353 TRAVELER 589 27	BW	SC		
	LA TERRE PRIMROSE 374N	PLEASANTA OF CONANGA 736	-1.3			
	NEW ERA OF BRINKS 541J37	CA FUTURE DIRECTION 5321	WW	REA		
	CONNIE L8054 OF LA TERRE	SUMMIT CREST PRIMROSE 2J02	21			
CP SHADA 72/2 R815776		KO OF BRINKS 392F10	YW	IMF		
		MISS BRINKS MILKYWAY 541E4	36			
		TRANSFORMER OF BRINKS	Milk	Fat		
		MISS BRINKS COWBOY 675E17	6			
			TM			
			17			
BW	Adj WW	Adj YW	SC	Adj REA	Adj IMF	
80	742	1252		13.95	5.163	

This young sire is a half brother to Lot 110 and you can certainly see the similarities. Just look this bull over and you will see the same impressive muscle structure, above average bone and certainly plenty of shape and capacity in the mid section. He too will wow you with all of the style he exhibits. Let's face it, if all other things are equal but you have a choice of buying one with some style or one that is plain wouldn't you rather buy one that is easy to look at.



SCC Crochet Wedge 739						LTP
113	1/30/2009	UB10151136	Polled	Ultrablack	PHN: 739	
PINE RIDGE KABOOM L025 EA15443425	BALDRIDGE KABOOM K243	JAUER 353 TRAVELER 589 27	BW	SC		
	LA TERRE PRIMROSE 374N	PLEASANTA OF CONANGA 736	0.0			
	NEW ERA OF BRINKS 541J37	CA FUTURE DIRECTION 5321	WW	REA		
	CONNIE L8054 OF LA TERRE	SUMMIT CREST PRIMROSE 2J02	32			
CP PRINCESS ADELE 73/2 R815777		KO OF BRINKS 392F10	YW	IMF		
		MISS BRINKS MILKYWAY 541E4	51			
		TRANSFORMER OF BRINKS	Milk	Fat		
		MISS BRINKS COWBOY 675E17	4			
			TM			
			20			
BW	Adj WW	Adj YW	SC	Adj REA	Adj IMF	
80	581	1272	31.1	13.98	2.921	

Another half brother to lots 110 and 112.

Ranks in the top 15% of the breed for WW, top 25% for YW and top 35% for BW.

Southern Lambert 406U3						SCC
114	11/18/2008	R10146111	Polled	Gen: 4th	PHN: 406U3	
LAMBERT OF BRINKS 317R3 R100004387	LEAD GUN OF BRINKS 222K14	CADENCE OF BRINKS	BW	SC		
	MS BRINKS GOOD FORTUNE 317M	MISS BB NEW BIG EASY 222E55	-1.7	.9		
	GARRETT OF BRINKS 789P	GOOD FORTUNE OF BRINKS 14H3	WW	REA		
	MS BRINKS VAN GO 406N9	MISS BRINKS LINEMAN 317E17	22	.43		
MS BRINKS GARRETT 406S39 R10082338		BEST BET OF BRINKS 535H38	YW	IMF		
		MS BRINKS ALI 789M	39	.17		
		VAN GO OF BRINKS 222K30	Milk	Fat		
		MSBRINKS SAUGHATCHEE 406K12	4	.007		
			TM			
			14			
BW	Adj WW	Adj YW	SC	Adj REA	Adj IMF	
80	649	1056		14.52	2.796	

This young bulls sire (Lambert of Brinks 317R3) is the number 1 bull of the entire breed for IMF. If you are searching to add marbling to your calves then Lambert sired progeny are a must. Ranks in the top 10% of the breed for IMF, and BW, top 30% for SC, and top 35% for REA.

SCC Csonka 607U2						L&W
115	12/21/2008	R10134614	Polled	Gen: 3rd	PHN: 607U2	
CSONKA OF BRINKS 30R4 R10004209	LEAD GUN OF BRINKS 222K14	CADENCE OF BRINKS	BW	SC		
	MISS BRINKS UPPERCUT 30L18	MISS BB NEW BIG EASY 222E55	2.0	1.1		
	KO OF BRINKS 392F10	UPPERCUT OF BRINKS 14J8	WW	REA		
	MISS CC RITO 3X25 607H35	MISS BRINKS SUNDANCE 30J32	32	.44		
MS BRINKS KO 607M2 R811090		FOREMAN OF BRINKS 99C5	YW	IMF		
		MISS BB NEW NEWSMAKER 392B3	56	.21		
		RITO 3X25 OF 5H11 EXT	Milk	Fat		
		MISS BB CORSO T607R16	2	-.006		
			TM			
			18			
BW	Adj WW	Adj YW	SC	Adj REA	Adj IMF	
74	622	1073		12.77	3.690	

Packed with power and IMF. Sired by the bull that is known for consistency Csonka of Brinks 30R4.

Ranks in the top 3% of the breed for IMF, top 15% for WW, YW, and SC.

Southern Griese 535U2						SCC
123	10/12/2008	R10146098	Polled	Gen: 5th	PHN: 535U2	
GRIESE OF BRINKS 803R27 R10034825	CEO OF BRINKS 99J44	BRINKS CADENCE 13F	BW	SC		
		MISS BRINKS EASY STREET 99F3	-1.6	.8		
	MS BRINKS ALI 803M	ALI OF BRINKS 209J2	WW	REA		
		MISS BRINKSTRANSFORMER803G	24	.62		
MS BRINKS LEAD GUN 535558 RR10057019	LEAD GUN OF BRINKS 222K14	CADENCE OF BRINKS	YW	IMF		
		MISS BB NEW BIG EASY 222E55	48	.19		
	MISS BRINKS GERONIMO 535K14	GERONIMO OF BRINKS 392F15	Milk	Fat		
		MISS BB NEW TYSON 535B15	13	-.007		
						TM
						25
BW	Adj WW	Adj YW	SC	Adj REA	Adj IMF	
79	569	1069		11.68	2.911	

Griese cattle are known for having carcass merit and this young bull is no different. Ranks in the top 5% of the breed for IMF, top 10% for REA and SC, top 15% for Milk and FT, top 20% for Maternal, top 30% for YW, top 35% for SC, and top 40% for WW. Ranked in the top 40% or above for all measured traits!

Brinks Griese 596U11						SCC
124	10/25/2008	R10136360	Polled	Gen: 5th	PHN: 596U11	
GRIESE OF BRINKS 803R27 R10034825	CEO OF BRINKS 99J44	BRINKS CADENCE 13F	BW	SC		
		MISS BRINKS EASY STREET 99F3	-.3	.6		
	MS BRINKS ALI 803M	ALI OF BRINKS 209J2	WW	REA		
		MISS BRINKSTRANSFORMER803G	24	.67		
MS BRINKS NEW ERA 596M4 R824758	NEW ERA OF BRINKS 541J37	KO OF BRINKS 392F10	YW	IMF		
		MISS BRINKS MILKY WAY 541E4	42	.15		
	MISS BRINKS TYPESETTER 596J6	TYPESETTER OF BRINKS 535G7	Milk	Fat		
		MISS BRINKS TROOPER 596F11	2	-.011		
						TM
						14
BW	Adj WW	Adj YW	SC	Adj REA	Adj IMF	
74	601	996		13.08	3.241	

This young bull is out of one of the most productive New Era females in the Southern herd. 596M4 has been a no miss donor cow and continues to put the kind everyone likes on the ground. Ranks in the top 4% of the breed for FT, top 10% for REA and IMF and top 25% for BW.

Southern Griese 361U						SCC
125	12/15/2008	R10146112	Polled	Gen: 5th	PHN: 361U	
GRIESE OF BRINKS 803R27 R10034825	CEO OF BRINKS 99J44	BRINKS CADENCE 13F	BW	SC		
		MISS BRINKS EASY STREET 99F3	-2.3	.6		
	MS BRINKS ALI 803M	ALI OF BRINKS 209J2	WW	REA		
		MISS BRINKSTRANSFORMER803G	25	.24		
MS BRINKS BLACKHAWK 361S16 R10056729	BLACKHAWK OF BRINKS 607M12	TRANSFORMER OF BRINKS	YW	IMF		
		MISS BRINKS SUNDANCE 607K18	41	.1		
	MISS BRINKS ALI 361L	ALI OF BRINKS 209J2	Milk	Fat		
		MISS BB NEW MAVERICK 361B2	8	-.013		
						TM
						20
BW	Adj WW	Adj YW	SC	Adj REA	Adj IMF	
67	758	1175		11.58	3.101	

When you combine Griese with a Blackhawk female you can count on one thing, performance with carcass merit. Ranks to 2% of the breed for FT, top 3% for BW, top 25% for IMF and top 35% for WW to ratio 106. He also ratioed 100 for YW.



CRC Black Rock 302U32						SCC
126	10/29/2008	R10125249	Polled	Gen: 5th	PHN: 302U32	
MC BLACK ROCK 27453 R10041512	TJM JOHN WAYNE 44L	WR DUKE 228/F	BW	SC		
		MISS TJM TRANSFORMER 44H	1.4	.4		
	CCC MS BRIGHT PROMISE 274L	BRIGHT PROMISE OF BRINKS	WW	REA		
		CCC MS NEWSMAKER 274J2	25	.33		
MS BRINKS BRIGHT SIDE 302L4 R804278	BRIGHT SIDE OF BRINKS 789G5	TRANSFORMER OF BRINKS	YW	IMF		
		MS BB BRIGHT PROMISE 789E14	38	-.02		
	MISS BRINKS GERONIMO 302H6	GERONIMO OF BRINKS 392F15	Milk	Fat		
		MISS BB BRIGHT PROMISE 302E4	5	.002		
						TM
						18
BW	Adj WW	Adj YW	SC	Adj REA	Adj IMF	
84	777	999		10.84	3.094	

This young bull combines many things that we search for. He is certainly a powerful animal to look at. He has been one that we have been keeping our eye on for quite some time. The MC Black Rock 27453 bull has been doing a tremendous job in the Chimney Rock program and I think this son will certainly add a lot to a cow herd.

Southern Largent 406U2						SCC
127	10/12/2008	R10146081	Polled	Gen: 4th	PHN: 406U2	
LARGENT OF BRINKS 784R17 R10035037	BRINKS BRIGHT SIDE 607L11	BRIGHT SIDE OF BRINKS 789G5	BW	SC		
		MISS BRINKS BIG EASY 607H10	-3.0	.2		
	MS BRINKS GOOD FORTUNE 784N9	GOOD FORTUNE OF BRINKS 14H3	WW	REA		
		MISS BRINKS GERONIMO 784J12	19	.51		
MS BRINKS LEAD GUN 406S27 R10056982	LEAD GUN OF BRINKS 222K14	CADENCE OF BRINKS	YW	IMF		
		MISS BB NEW BIG EASY 222E55	40	.11		
	MISS BRINKS BRIGHT SIDE 406P14	BRIGHT SIDE OF BRINKS 789G5	Milk	Fat		
		MISS BRINKS RITO 9FB3 406K19	7	.012		
						TM
						16
BW	Adj WW	Adj YW	SC	Adj REA	Adj IMF	
60	571	1040		11.98	3.200	

This bull is a perfect example of one of the most consistent matings in the Brangus world. He combines 607L11 and Lead Gun. This works day in and day out. Ranks in the top 2% of the breed for BW with an actual of 60#. Top 20% for IMF to ratio 108 and top 25% REA.

Southern Largent 797W						SCC
128	2/3/2009	R10154023	Polled	Gen: 6th	PHN: 797W	
LARGENT OF BRINKS 784R17 R10035037	BRINKS BRIGHT SIDE 607L11	BRIGHT SIDE OF BRINKS 789G5	BW	SC		
		MISS BRINKS BIG EASY 607H10	-.2	0.0		
	MS BRINKS GOOD FORTUNE 784N9	GOOD FORTUNE OF BRINKS 14H3	WW	REA		
		MISS BRINKS GERONIMO 784J12	19	.21		
MS BRINKS KID 797S R10057095	KID OF BRINKS 392P68	SUNDANCE OF BRINKS 392G9	YW	IMF		
		MISS BRINKS CUSTER 392F40	40	.08		
	MISS BRINKS UPPERCUT 797N	UPPERCUT OF BRINKS 14J8	Milk	Fat		
		MISS BRINKS BRIGHT SIDE 797L	4	.003		
						TM
						13
BW	Adj WW	Adj YW	SC	Adj REA	Adj IMF	
73	757	1115		13.10	3.380	

Another good solid Largent son. Ranks top 30% of the breed for BW and 30% IMF to ratio 105. A great heifer bull.

Brinks Cole 803U18						SCC
129	9/20/2008	R10128435	Polled	Gen: 5th	PHN: 803U18	
COLE OF BRINKS 14P3 R968825	NIMITZ OF BRINKS 75L12	CEO OF BRINKS 99J44	BW	SC		
		MISS BRINKS POWER LINE 75J2	-3.6	.3		
	MISS BB BRIGHT PROMISE 14F5	BRIGHT PROMISE OF BRINKS	WW	REA		
		MS BBCC BIG EASY 14D3	23	.41		
MS BRINKS LOMBARDI 803S25 R10056847	LOMBARDI OF BRINKS 468N10	BRIGHT SIDE OF BRINKS 789G5	YW	IMF		
		MISS BRINKS CADENCE 468G15	49	.01		
	MISS BRINKS KO 803J	KO OF BRINKS 392F10	Milk	Fat		
		MISS BRINKSTRANSFORMER803G	6	-.004		
						TM
						17
BW	Adj WW	Adj YW	SC	Adj REA	Adj IMF	
48	654	1041		11.38	3.752	

This Cole son comes out of one of the strongest cow families at Southern today. The 803 family has already produced some really stout females and bulls that have commanded top dollar at auction. This bull would be a half brother in blood to the female that topped the Global Collection Sale in Houston back in March. Ranks in the top 1% for BW to ratio 73, top 25% for YW to ratio 104 and top 30% FT

SCC TF Lavaca 89U						TF
130	9/19/2008	R10123299	Polled	Gen: 6th	PHN: 89U	
LAVACA OF BRINKS 7052 R1005279	LEAD GUN OF BRINKS 222K14		CADENCE OF BRINKS		BW	SC
	BURTINS BS 70N3		MISS BB NEW BIG EASY 222E55		3.7	.8
	NEW ERA OF BRINKS 541J37		BRIGHT SIDE OF BRINKS 789G5		WW	REA
	TF MS 89L2		BURTINS MISS KO 70J		35	.65
TF MS 89R R10017843			KO OF BRINKS 392F10		YW	IMF
			MISS BRINKS MILKY WAY 541E4		64	.07
			SUCCESS OF CAMP COOLEY 55H		Milk	Fat
			MISS HD COLT 890E6		-4	.001
						TM
						14

This Lavaca son is certainly his sire's son. This big rugged, thick, stout bull will help to put the pounds on the ground in your next calf crop.

Ranks in top 5% of the breed for YW, top 10% for WW and REA to ratio 103, top 30% for IMF and top 35% SC.

131

9/25/2008

R10128283

Polled

Gen: 6th

PHN: 302U22

BRINKS BRIGHT SIDE 607L11

MISS BRINKS BIG EASY 607H10

ANGELO OF BRINKS 489K4

MS BRINKS NEW ERA 209M

SONAR OF BRINKS 607L18

MISS BRINKS GAUCHO 782K20

CADENCE OF BRINKS

MS BRINKS BRIGHT SIDE 302L9

BW

.5

WW

21

45

Milk

2

TM

SC

.8

REA

.61

.07

Fat

.005

ROBERTSON OF BRINKS 20959

R10046089

MS BRINKS ANGELO 209P14

PICKETT OF BRINKS 782P5

MS BRINKS PICKETT 302S41

R10056968

MS BRINKS CADENCE 302P50

BW

Adj WW

Adj YW

SC

Adj REA

Adj IMF

76

616

964

12.75

3.357

There are few Robertson calves that walk the ground since Robertson died at such a young age. The few that are around exhibit tremendous thickness and expression of muscle.

Ranks top 10% for REA to ratio 106, top 30% IMF and top 35% YW.

132

2/19/2009

R10154021

Polled

Gen: 6th

PHN: 541P40*

SCC

ROBERTSON OF BRINKS 20959

R10046089

BRINKS BRIGHT SIDE 607L11

MS BRINKS ANGELO 209P14

UPPERCUT OF BRINKS 14J8

MISS BRINKS TROOPER 541H8

BRIGHT SIDE OF BRINKS 789G5

MISS BRINKS BIG EASY 607H10

ANGELO OF BRINKS 489K4

MS BRINKS NEW ERA 209M

KO OF BRINKS 392F10

MS BBCC BIG EASY 14D3

TROOPER OF BRINKS

MISS BRINKS MILKY WAY 541E4

MS BRINKS UPPERCUT 541P40

R9685626

BW

Adj WW

Adj YW

SC

Adj REA

Adj IMF

.2

.8

WW

REA

31

.83

YW

IMF

56

.01

Milk

Fat

-1

.002

TM

72

826

1313

33.7

15.43

3.100

Another Robertson son that balances phenotype and numbers.

Ranks in the top 1% of the breed for REA to ratio 115, top 15% for WW and YW to ratio 106 and 108, top 35% SC.

*Branded with dams PHN of 541P40

133

9/18/2008

R10136900

Polled

Gen: 6th

PHN: 535U8

IH

CHIEF OF INDIAN HILLS 23P68

R9693019

SVF HIGH PRIME 99K31

SALACOA PINE LASS 23D2

SVF MR 192J5

SVF MISS NEWSDAY

SVF MS 535L19

R801463

SUNDANCE OF BRINKS 392G9

MISS BRINKS CARRARA 99F2

SVF-CNF PINE LOG 793Y

WPH MISS TINY 23U

TRANSFORMER OF BRINKS

SVF MISS CHAMP 533

BRINKS CC NEWS DAY 661C2

MISS BRINKS HERITAGE 535F24

BW	Adj WW	Adj YW	SC	Adj REA	Adj IMF
82	659	1149	32.5	12.25	3.052

BW	SC	WW	REA	YW	IMF	Milk	Fat
1.8	.3	32	.49	55	-.02	2	.001
18							

Really complete and balanced is how you describe 535U8. His sire Chief of Indian Hills 23P68 has been servicing the Indian Hills herd well as Jr. herd sire.

Ranks in the top 15% of the breed for WW and YW to ratio 102 and 104 and ranks in the top 25% for REA to ratio 102.

134

2/15/2009

R10136923

Polled

Gen: 4th

PHN: 820W2

IH

SVF HIGH PRIME 99K31

MISS BRINKS CARRARA 99F2

SVF-CNF PINE LOG 793Y

WPH MISS TINY 23U

LINEMAN OF BRINKS 881A7

MISS BB NEW EXACTO 784W

WB TARGET 804D32

WB MS TONTO 820C6

BW

SC

1.7

.3

WW

REA

39

.71

YW

IMF

70

.07

Milk

Fat

3

.005

TM

23

CHIEF OF INDIAN HILLS 23P68

R9693019

SALACOA PINE LASS 23D2

TRANSFORMER OF BRINKS

MS 38 CENTER RANCH 820/P39

R9677183

CR CINDERELLA 820F21

BW

Adj WW

Adj YW

SC

Adj REA

Adj IMF

72

795

1208

11.60

3.994

Another son of Chief of Indian Hills 23P68 that shows the consistency and performance of these cattle.

Ranks in the top 2% of the breed for YW, top 4% for WW and REA to ratio 106 and 107, top 25% for Maternal, and top 30% for IMF to ratio 104.

SCC IH Cheif 35W						IH	
135	3/3/2009	R10136934	Polled	Gen: 5th	PHN: 35W		
CHIEF OF INDIAN HILLS 23P68 R9693019	SVF HIGH PRIME 99K31		SUNDANCE OF BRINKS 392G9		BW	SC	
	SALACOA PINE LASS 23D2		MISS BRINKS CARRARA 99F2		2.4	.3	
	LEAD TIME OF BRINKS 795J4		SVF-CNF PINE LOG 793Y		WW	REA	
			WPH MISS TINY 23U		27	.41	
SVF MS 35L9 R801634			TYPESETTER OF BRINKS 535G7		YW	IMF	
	SVF MS MAINLINE 35A		MISS BRINKS CARRARA 795E8		56	.11	
			GLC MAINLINE		Milk	Fat	
			WSR GA TALLY 35T2		4	.001	
						TM	
						18	

This young bull tracks back to some of the greats in cow families.

Ranks in the top 15% of the breed for YW, top 20% for IMF to ratio 136, top 30% for WW.

Look at this bulls actual IMF of 5.294, if you want to add marbling he should sure be on your list.

136

3/15/2009

R10136935

Polled

Gen: 4th

PHN: 193W

SCC IH Cheif 193W

IH

SVF HIGH PRIME 99K31

MISS BRINKS CARRARA 99F2

SVF-CNF PINE LOG 793Y

WPH MISS TINY 23U

NEWSMAKER OF BRINKS 71Z4

SCR MS HOSS 274Y2

ARISTOCRAT OF JLS

MS WBR TYSON 193B

BW

SC

2.0

.3

WW

REA

36

.51

YW

IMF

64

.05

Milk

Fat

7

.005

TM

25

CHIEF OF INDIAN HILLS 23P68

R9693019

SALACOA PINE LASS 23D2

JLS NEWSMAKER 274K

MS JLS NEWSMAKER 193N4

R9681567

MS JLS ARISTOCRAT 193K8

BW

Adj WW

Adj YW

SC

Adj REA

Adj IMF

81

689

1214

33.7

12.84

4.422

This bull comes from one of the strongest cow families in the business, 193. Many greats have been generated with those numbers on their hips.

Ranks in the top 5% of the breed for YW to ratio 106, top 10% for WW to ratio 108, top 20% for Maternal, and top 25% for REA to ratio 105.

137

4/10/2009

R10152782

Polled

Gen: 4th

PHN: 820W8

SCC IH Cheif 820W8

IH

CHIEF OF INDIAN HILLS 23P68

R9693019

SVF HIGH PRIME 99K31

SALACOA PINE LASS 23D2

BRIGHT SIDE OF BRINKS 789G5

CR CINDERELLA 820F21

SUNDANCE OF BRINKS 392G9

MISS BRINKS CARRARA 99F2

SVF-CNF PINE LOG 793Y

WPH MISS TINY 23U

TRANSFORMER OF BRINKS

MSBB BRIGHT PROMISE 789E14

WB TARGET 804D32

WB MS TONTO 820C6

BW	SC
3.0	.5
WW	REA
47	.65
YW	IMF
80	.00
Milk	Fat
6	.008
TM	
29	

MS 38 CENTER RANCH 820/M38

R822489

BW	Adj WW	Adj YW	SC	Adj REA	Adj IMF
79	756	1308	36.8	13.49	3.027

As you study this bulls pedigree you can see that there are many summit cows located within his pedigree. Simply put that equals fertility. In order for a cow to achieve such status she must produce a calf every year for several years in a row. If she fall outside the calving interval just once she does not qualify for summit cow status.

Ranks in the top 1% of the breed for WW and YW and ratioed a 124 and 113. Ranked in the top 10% for Maternal and REA. It's not easy to find bulls that rank in the top 1% for any trait, much less two traits.

SCC IH Chief 392W5							IH	
138	5/5/2009	R10146327	Polled	Gen: 6th	PHN: 392W5		BW	SC
CHIEF OF INDIAN HILLS 23P68 R9693019	SVF HIGH PRIME 99K31	SUNDANCE OF BRINKS 392G9					2.8	.9
	SALACOA PINE LASS 23D2	MISS BRINKS CARRARA 99F2					WW	REA
	BACKSIDE OF BRINKS 14K5	SVF-CNF PINE LOG 793Y					44	.41
	MISS BRINKS BACKSIDE 392P89	BRIGHT SIDE OF BRINKS 789G5					YW	IMF
MS BRINKS BACKSIDE 392P89 R9685318	MISS BRINKS CUSTER 392F40	MISS BRINKS MILKY WAY 14G					72	.04
		CUSTER OF BRINKS					Milk	Fat
		MISS BB NEW NEWSMAKER 392B3					-2	.005
							TM	
							78	
							650	
							1291	
							38.3	
							12.61	
							3.125	

Another Chief of Indian Hills 23P68 son that has done what few animals can claim. Ranks in the top 1% of the breed for WW to ratio 102 and top 2% for YW to ratio 112. These offspring show the consistency of this sire.

SCC Skyhawks 01S-7U							IH	
139	10/5/2008	R10121345	Polled	Gen: 5th	PHN: 7U		BW	SC
CB BT 015 R10052346	BURTIN'S TRANSFORMER 803G3	TRANSFORMER OF BRINKS					.6	.4
	MS 38 CENTER RANCH 01/K20	BURTIN'S MISS MILKY WAY 803E					WW	REA
	SKYHAWKS MVP 419L	GERONIMO OF BRINKS 392F15					26	.34
	SKYHAWKS MS MVP 7R	XS MS TOMBSTONE 01E1					YW	IMF
SKYHAWKS MS MVP 7R R10040422	SKYHAWKS MS GINGER 7M	SOUTH GATE'S MVP 157E22					44	.07
		BFR MISS SANDI					Milk	Fat
		JC POWER STROKE 582F					7	-.013
		MISS MS KARA 7C					TM	
							68	
							668	
							1084	
							13.07	
							5.176	

Lots of performance and maternal blended into this pedigree. You will recognize such influential sires as Burtin's Transformer and Geronimo.

Top 2% of the breed for FT, top 30% for WW and IMF to ratio a 104 and a 128. His actual IMF number is 5.176. This is the kind of bull that can make a change to a calf crop.

SCC IH Affirmed 607U3							IH	
140	10/21/2008	R10136661	Polled	Gen: 5th	PHN: 607U3		BW	SC
IFCC AFFIRMED 98155 R10054804	SUHN'S AFFIRMED 416N4	ALI OF BRINKS 209J2					1.1	.5
	MS IRON FARM 636H2-981P4	MISS CC NEWS DAY 416E					WW	REA
	BRINKS BRIGHT SIDE 607L11	CCR SLEEP EASY 636H2					18	.09
	MISS BRINKS CHALLENGER 607J6	MS IRON FARM 10J3-981M					YW	IMF
IH MS BRIGHT SIDE 607S4 R10077706		BRIGHT SIDE OF BRINKS 789G5					46	.02
		MISS BRINKS BIG EASY 607H10					Milk	Fat
		CHALLENGER OF BRINKS					1	-.001
		MISS BRINKS LINEMAN 607D11					TM	
							72	
							615	
							1147	
							10.7	
							4.136	

This young bull is the grandson of probably one of the most consistent sire in the breed, Suhn's Affirmed 416N4. If you are looking for a moderate, thick, big footed bull to go cover some cows then look him up.

He had a YW ratio of 104 and an IMF ratio of 102. He posted an actual IMF number of 4.136.

SCC Roberts Washington 336W							IH	
141	2/21/2009	R10140836	Polled	Gen: 6th	PHN: 336W		BW	SC
WASHINGTON OF BRINKS 302S47 R10067421	LEAD GUN OF BRINKS 222K14	CADENCE OF BRINKS					1.3	.8
	MS BRINKS BRIGHT SIDE 302L9	MISS BB NEW BIG EASY 222E55					WW	REA
	BRIGHT SIDE OF BRINKS 789G5	BRIGHT SIDE OF BRINKS 789G5					27	.52
	MISS BRINKS BRIGHT SIDE 336K3	MISS BRINKS GERONIMO 302H6					YW	IMF
MS BRINKS BRIGHT SIDE 336K3 R778343	MISS BRINKS MILKY WAY 336H9	TRANSFORMER OF BRINKS					56	-.01
		MS BB BRIGHT PROMISE 789E14					Milk	Fat
		BRINKS MILKY WAY 535D38					1	.005
		MISS BRINKS EASY STREET 336E					TM	
							88	
							613	
							1176	
							12.19	
							4.820	

This Washington son has done many things right to this point. He posted a YW ratio of 103. He also had an actual IMF number of 4.883 at 345 days of age. He ranks in the top 15% of the breed for YW, top 20% for REA, top 30% for WW, and top 35% for SC.

SCC Roberts Ins 544T-596W							IH	
142	3/1/2009	R10140810	Polled	Gen: 6th	PHN: 596W		BW	SC
TJM INSURRECTION 544T R10091094	SUHN'S AFFIRMED 416N4	ALI OF BRINKS 209J2					1.5	.9
	TJM MS BT 544R2	MISS CC NEWS DAY 416E					WW	REA
	BRINKS UPPERCUT 209M12	BURTIN'S TRANSFORMER 803G3					34	.39
	MS BRINKS LEAD GUN 596N18	MS TJM CADENCE 607H18 544L3					YW	IMF
RR MS UPPERCUT 596S R10033535		UPPERCUT OF BRINKS 14J8					63	-.03
		MISS BRINKS THE NATURAL 209K23					Milk	Fat
		LEAD GUN OF BRINKS 222K14					4	-.001
		MISS BRINKS TROOPER 596F11					TM	
							62	
							655	
							1020	
							10.11	
							3.658	

This is a complete moderate bull that is sure to make a difference in a breeding program. Out of the great TJM Insurrection 544T bull, good things are bound to happen.

Ranks in the top 5% of the breed for YW and top 10% for WW and top 30% for SC.

SCC TF Cut Right 302W							TF	
143	1/6/2009	R10127724	Polled	Gen: 6th	PHN: 302W		BW	SC
SUHN'S CUT RIGHT 894R28 R10047913	UPPERCUT OF BRINKS 14J8	KO OF BRINKS 392F10					-1.5	.7
	SUHN'S MISS BT 894N16	MS BBCC BIG EASY 14D3					WW	REA
	SUCCESS OF CAMP COOLEY 55H	BURTIN'S TRANSFORMER 803G3					15	.35
	TF MS 302L2	SUHN'S MISS CADENCE 894H					YW	IMF
TF MS 302L2 R807040		TRANSFORMER OF BRINKS					35	.01
		MISS CC COWBOY 55F2					Milk	Fat
		CADENCE OF BRINKS					12	.001
		SMR MISS RANGER 302G4					TM	
							65	
							605	
							1033	
							14.26	
							2.912	

A big bodied stout bull are the words that best describe this own son of Cut Right.

Ranks in the top 10% of the breed for BW with an actual of 65#. Ranks in top 20% for Milk. Calving ease with a shot of maternal.

SCC TF Cut Right 227W2							TF	
144	1/28/2009	R10130081	Polled	Gen: 6th	PHN: 227W2		BW	SC
SUHN'S CUT RIGHT 894R28 R10047913	UPPERCUT OF BRINKS 14J8	KO OF BRINKS 392F10					0.0	0.00
	SUHN'S MISS BT 894N16	MS BBCC BIG EASY 14D3					WW	REA
	SUCCESS OF CAMP COOLEY 55H	BURTIN'S TRANSFORMER 803G3					00	.00
	TF MS 227M	SUHN'S MISS CADENCE 894H					YW	IMF
TF MS 227M R814417		TRANSFORMER OF BRINKS					000	.00
		MISS CC COWBOY 55F2					Milk	Fat
		TRANSFORMER OF BRINKS					00	.000
		CALDWELL MISS LINEMAN 227G					TM	
							96	
							648	
							1096	
							35.8	
							11.82	
							2.411	

Another own son of Cut Right that is sure to impress. Long bodied and plenty of rib.

Ranks in top 25% for YW and top 30% for FT



This young bull exhibits lots of muscle and mass, just like his sire IFCC Cash 5137P5. With Blackhawk back in the pedigree you know you will have lots of power, ample bone, and a ton of style. Ranks in the top 10% of the breed for Maternal, top 15% for WW and YW and Milk.
*Adjusted to 452 days.

99W9 is the first of several full brothers in the sale. As you can see consistency is how you describe the Cash sons out of this great Picasso donor. What an opportunity to purchase several full sibs and make your calf crop as uniform as you possibly can. Ranks in the top 2% of the breed for YW to ratio 110, top 4% for WW to ratio 118, top 10% for Maternal, and to 35% for Milk.

Ranks in the top 15% of the breed for WW to ratio 107 and top 15% for Maternal. Ranks in the top 5% for YW to ratio 110 and top 25% for both Milk and FT.

These brothers are consistent from top to bottom.
Ranks in the top 15% for YW and Milk, top 20% for Maternal, and top 25% for FT. Look at that actual IMF number of 4.152.

210W is another Cash son that sure fits this group from Star G well!
Ranks in the top 20% for WW and YW and top 25% for Maternal.

Another one of the full brothers again. You do not want to miss out on this set. Ranks in the top 5% of the breed for YW to ratio 107, top 15% for WW and Maternal to ratio 106, top 25% for Milk, REA, and Fat.

This young bull is the start of a set of half brothers out of the Doubletary of Brinks 209556 herd sire. He is a full brother to Singletary of Brinks and has been doing an outstanding job as senior herd sire for the Ken Mutscher Ranch. Ranks in the top 15% of the breed for WW, YW, and FT and top 30% for SC. He posted a WW ratio of 105.

This Doubletary son comes out of Trooper daughter. Those Trooper females sure were big broody females that make money in the cow business.
Ranks in the top 35% of the breed for YW and SC.

SCC IH Warrior 820W						IH	
160	2/8/2009	R10136931	Polled	Gen: 3rd	PHN: 820W		
SR WRANGLER WARRIOR R520 R10001129	ACES TF WRANGLER 145	BRINKS CC NEWS DAY 661C2	BW	SC		.8	.6
		GLEN OAK BECKY 145/6	WW	REA		25	.19
	SR CHEROKEE PRINCESS L101	CADENCE OF BRINKS	YW	IMF		49	.11
	BEST BET OF BRINKS 535H38	SR POCAHONTAS J910	Milk	Fat		23	.005
CENTER MS BEST BET 820/R43 R10030341	MISS BB NEW TYSON 535B15	BRINKS CC NEWS DAY 661C2	TM			36	
	OCC ANCHOR 771A						
	MS 38 CENTER RANCH 820M8	WB MS 801S2 - 820X4					
BW	Adj WW	Adj YW	SC	Adj REA	Adj IMF		
77	686	1148		10.00	3.702		

The kind to retain females from. Just look at all of the milk and maternal this bull has to offer.

Top 1% of the breed for Milk and Maternal, top 20% for IMF, top 25% for YW, and top 35% WW.

SCC Lead Gun 274S6-21W						L&W	
161	1/20/2009	R10128446	Polled	Gen: 4th	PHN: 21W		
SVF MR 274S6 R10052361	LEAD GUN OF BRINKS 222K14	CADENCE OF BRINKS	BW	SC		1.2	.8
		MISS BB NEW BIG EASY 222E55	WW	REA		32	.43
	MISS JLS REVENUE 274N6	MR BAR J REVENUE 161K5	YW	IMF		53	.08
	TJM JOHN WAYNE 44L	SCR MS HOSS 274Y2	Milk	Fat		-1	.001
WOW MS JOHN WAYNE 21N9 R9673016	WOW MS NEWSMAKER 21J	WR DUKE 228/F	TM			15	
		MISS TJM TRANSFORMER 44H					
		XS NEWSMAKER 161G1					
		MS TOMAHAWK 21/5					
BW	Adj WW	Adj YW	SC	Adj REA	Adj IMF		
61	577	1050	32.4	12.32	3.796		

When you combine Lead Gun and John Wayne in a pedigree it is a no miss!
Ranks in the top 15% of the breed for WW, top 20% for YW, top 30% for IMF and top 35% for SC and REA.

SCC Mr. Lead Gun 75W						L&W	
162	3/16/2009	R10139275	Polled	Gen: 4th	PHN: 75W		
SVF MR 274S6 R10052361	LEAD GUN OF BRINKS 222K14	CADENCE OF BRINKS	BW	SC		1.5	.7
		MISS BB NEW BIG EASY 222E55	WW	REA		26	.51
	MISS JLS REVENUE 274N6	MR BAR J REVENUE 161K5	YW	IMF		56	.04
	BRIGHT SIDE OF BRINKS 789G5	SCR MS HOSS 274Y2	Milk	Fat		7	-.001
MS BRINKS BRIGHT SIDE 75R94 R10034568	MS BB BRIGHT PROMISE 789E14	TRANSFORMER OF BRINKS	TM			20	
	GOOD FORTUNE OF BRINKS 14H3						
	MISS BRINKS CADENCE 75H24						
BW	Adj WW	Adj YW	SC	Adj REA	Adj IMF		
77	525	1123		13.22	3.918		

75W comes loaded with power and fertility. His pedigree is stacked with summit cows.
Ranks in the top 15% for YW, top 25% for REA and top 30% for WW.

SCC Mr. Lead Gun 54W						L&W	
163	3/23/2009	R10139043	Polled	Gen: 4th	PHN: 54W		
SVF MR 274S6 R10052361	LEAD GUN OF BRINKS 222K14	CADENCE OF BRINKS	BW	SC		.4	.6
		MISS BB NEW BIG EASY 222E55	WW	REA		22	.3
	MISS JLS REVENUE 274N6	MR BAR J REVENUE 161K5	YW	IMF		44	.09
	BLACK LIGHTNING	SCR MS HOSS 274Y2	Milk	Fat		9	.000
HF MS FEB R9671423	GB JETHRO 8E	TRANSFORMER OF BRINKS	TM			20	
		SALACOA MISS ALAMO					
		CCR PATHFINDER 823A					
		GB WARRIOR 28/1					
BW	Adj WW	Adj YW	SC	Adj REA	Adj IMF		
75	553	1188	33.6	11.49	4.270		

If you are looking to add some IMF to your herd in a calving ease package then look no farther.
Actual IMF score of 4.270 and he ranks in the top 25% of the breed for IMF.

SCC Mr. Lead Gun 5W2						L&W	
164	4/5/2009	R10139044	Polled	Gen: 4th	PHN: 5W2		
SVF MR 274S6 R10052361	LEAD GUN OF BRINKS 222K14	CADENCE OF BRINKS	BW	SC		.7	.6
		MISS BB NEW BIG EASY 222E55	WW	REA		18	.47
	MISS JLS REVENUE 274N6	MR BAR J REVENUE 161K5	YW	IMF		39	.00
	WAT BRIGHT LITES 890M5	SCR MS HOSS 274Y2	Milk	Fat		10	-.001
L&W MS BRIGHTLITES 5R R10012373	L & W MISS LODGE 5M2	BRIGHT SIDE OF BRINKS 789G5	TM			19	
		MISS HD BIG EASY 890F					
		ROCKBROOKS LODGE 302E6					
		GB GLYNN 5H2					
BW	Adj WW	Adj YW	SC	Adj REA	Adj IMF		
79	505	1083	34.4	13.03	2.391		

Balanced from top to bottom, whether you are discussing phenotype, genotype, or EPDs.
Ranks in the top 30% of the breed for REA and top 35% for Milk.

SCC SGR Affirmed 607W8						SGR	
165	4/15/2009	R10155857	Polled	Gen: 4th	PHN: 607W8		
SUHN'S AFFIRMED 416N4 R9678800	ALI OF BRINKS 209J2	KO OF BRINKS 392F10	BW	SC		0.0	0.00
		MISS BRINKS TROOPER 209G	WW	REA		.00	.00
	MISS CC NEWS DAY 416E	BRINKS CC NEWS DAY 661C2	YW	IMF		.000	.00
	SUNDANCE OF BRINKS 392G9	MTG MS UPDATE 416B	Milk	Fat		.00	.000
MISS BRINKS SUNDANCE 607K18 R778419	MISS BB NEW PERFORMER 392C4	COWBOY OF BRINKS	TM			00	
	BRIGHT PROMISE OF BRINKS						
	MISS BB BRIGHT PROMISE 607F24						
	MISS BB NEW YORKER 607T10						
BW	Adj WW	Adj YW	SC	Adj REA	Adj IMF		
78	622	992	31.5	11.65	3.532		

607W8 is the only son of Suhn's Affirmed 416N4 in the sale and you sure can't miss him.
Really an eye catcher.
Ranks in the top 20% of the breed for YW. REA ratio of 102.

Southern Campbell 240W						SCC	
166	2/12/2009	R10150738	Polled	Gen: 5th	PHN: 240W		
CAMPBELL OF BRINKS 99R17 R10004175	LEADER OF BRINKS 302L	LEAD TIME OF BRINKS 795J4	BW	SC		1.5	.7
		MISS BRINKS CHALLENGER 302G3	WW	REA		11	.08
	MISS BRINKS ALI 99L9	ALI OF BRINKS 209J2	YW	IMF		26	.07
	HICKOK OF BRINKS 795P	MISS BRINKS NEWSDAY 99E33	Milk	Fat		-1	-.008
MS BRINKS HICKOK 240S58 R10067414	MISS BRINKS TRANSFORMER 795H	LEAD GUN OF BRINKS 222K14	TM			5	
	BRINKS BIG EASY 30H14						
	MISS BRINKS PICASSO 240H7						
BW	Adj WW	Adj YW	SC	Adj REA	Adj IMF		
78	764	1124		11.82	3.348		

His granddam 240K6 was a tremendous donor female in the Camp Cooley program and his dam has been making her mark as well.
Top 10% of the breed for FT and top 30% for IMF. IMF ratio of 104.

SCC IH Transformer 30W						IH	
167	4/10/2009	R10152755	Polled	Gen: 5th	PHN: 30W		
IH TRANSFORMER 535T2 R10066447	TRANSFORMER OF BRINKS	LINEMAN OF BRINKS 881A7	BW	SC		-.5	.1
		MISS BB NEW EXACTO 784W	WW	REA		24	.52
	MS 38 CENTER RANCH 535/L26	MR CENTERRANCH SHARPSHOOTER	YW	IMF		45	-.09
	WAT LEAD GUN 33P6	MS BRINKS EASY STREET 535F58	Milk	Fat		2	.001
IH MS LEAD GUN 30T R10066442	MISS BRINKS TRANSFORMER 795H	LEAD GUN OF BRINKS 222K14	TM			14	
	BRINKS BRIGHT SIDE 607L11						
	MISS BRINKS BIG EASY 30K18						
BW	Adj WW	Adj YW	SC	Adj REA	Adj IMF		
68	629	1104	34.1	14.89	2.397		

30W is a calf packed with lots of read meat. 1.36 square inches of Ribeye per hundred wt at yearling. Actual REA of 15.1. WW ratio of 103. Rank in the top 20% for REA, top 25% for BW, and top 35% for YW.

SCC Crochet Ultra 148						LTP
176	10/14/2008	UB10142518	Polled	Ultrablack	PHN: 148	
LA TERRE NEW HORIZON BNS130	KMK BANDO 598 K215	BON VIEW BANDO 598	BW	SC	0.0	
	MISS 4L CHALLENGER 402J	BASIN ENCHANTRESS D14A	WW	REA	25	
	BRINKS KO 141J6	CHALLENGER OF BRINKS	YW	IMF	58	
MS EVERGREEN 14 OF LA TERRE BNS264	MISS 4L 402-5	KO OF BRINKS 392F10	Milk	Fat	2	
	MISS BRINKS LINEMAN 141E2	MISS BRINKS LINEMAN 141E2	TM		15	
	PARAMONT AMBUSH 2172	PARAMONT AMBUSH 2172				
	MS EVERGREEN 011 OF LA TERRE	DEL RIVER EVERGREEN 136				
BW	Adj WW	Adj YW	SC	Adj REA	Adj IMF	
85	687	1199*		10.79*	2.335*	

Ranks in the top 10% for YW to ratio 106, top 35% for WW to ratio 109 and BW.
REA ratio of 102.

*Adjusted to 452 days.



SSC Crochet Welcome 189						LTP
177	2/25/2009	UB10151160	Polled	Ultrablack	PHN: 189	
LA TERRE NEW HORIZON BNS130	KMK BANDO 598 K215	BON VIEW BANDO 598	BW	SC	-2	
	MISS 4L CHALLENGER 402J	BASIN ENCHANTRESS D14A	WW	REA	26	
	BRINKS KO 141J6	CHALLENGER OF BRINKS	YW	IMF	57	
MS EVERGREEN 18 OF LA TERRE BNS267	MISS 4L 402-5	KO OF BRINKS 392F10	Milk	Fat	3	
	MISS BRINKS LINEMAN 141E2	MISS BRINKS LINEMAN 141E2	TM		16	
	G A R PRECISION 1680	G A R PRECISION 1680				
	MS STORMY 05 OF LA TERRE	CS MISS STORMY 804				
BW	Adj WW	Adj YW	SC	Adj REA	Adj IMF	
74	561	1159		10.05	4.175	

Another half brother to lots 175 and 176. What a complete set of UltraBlacks.

Ranks in the top 15% for YW to ratio 107 and top 30 % for BW and WW. Ratioed 114 for WW.
Actual IMF of 4.175

SCC Crochet Underdog348						LTP
178	10/20/2008	UB10142529	Polled	Ultrablack	PHN: 348	
LA TERRE LEAD ON 426 UB10053817	LA TERRE NEW HORIZON	KMK BANDO 598 K215	BW	SC	-4	
	MS ANNIE 42 OF LA TERRE	MISS 4L CHALLENGER 402J	WW	REA	25	
	BRINKS CADENCE 13F	BALDRIDGE NOTCH A C	YW	IMF	56	
MS EVERGREEN 34 OF LA TERRE BNS247	MISS BB NEW HOTLINE 13C2	NEWS DAY ANNIE OF LA TERRE	Milk	Fat	19	
	PARAMONT AMBUSH 2172	CADENCE OF BRINKS	TM		31	
	DEL RIVER EVERGREEN 136	MISS BB NEW HOTLINE 13C2				
BW	Adj WW	Adj YW	SC	Adj REA	Adj IMF	
82	701	1236*		10.94*	3.503*	

348 is a bull packed with growth and maternal in a low BW package.

Ranks in the top 2% for Milk, top 5% Maternal, top 15% for YW to ratio 109, top 25% BW, and top 35% WW to ratio 111. IMF ratio of 115 and REA ratio of 103.

*Adjusted to 452 days.

SCC Crochet War Lord 219						LTP
179	3/12/2009	UB10151239	Polled	Ultrablack	PHN: 219	
TEASER 1687 OF LA TERRE UB10092208	QUINN 01 OF LA TERRE	G A R YIELD GRADE	BW	SC	-3	
	CP 43	DEL RIVER EVERGREEN 136	WW	REA	24	
	BALDRIDGE NOTCH A C	TRANSFORMER OF BRINKS	YW	IMF	49	
MS ANNIE 021 OF LA TERRE BNS235	SVF BLACKBIRD 1620	AR MS RAE	Milk	Fat	13	
	BRINKS CC NEWS DAY 661C2	BON VIEW BANDO 598	TM		25	
	MISS BB NEW HOTLINE 99A2	SVF BLACKBIRD 1620				
BW	Adj WW	Adj YW	SC	Adj REA	Adj IMF	
70	605	1268		11.69	3.830	

Ranks in the top 15% for Milk, top 20% for Maternal, top 25% for BW and YW. YW ratio of 117. WW ratio of 123. REA ratio of 105.

Lots of growth and red meat.

SCC Crochet West 329						LTP
180	2/15/2009	UB10151205	Polled	Ultrablack	PHN: 329	
LA TERRE SURE SHOT 606 UB10053866	CCR T510 666L3	SS TRAVELER 6807 T510	BW	SC	.1	
	MS CEO ANNIE 61 OF LA TERRE	MISS CCR EMULATION EXT 666G	WW	REA	18	
	BALDRIDGE NOTCH A C	CEO OF BRINKS 99J44	YW	IMF	35	
MS ANNIE 32 OF LA TERRE BNS239	SVF BLACKBIRD 1620	NEWS DAY ANNIE OF LA TERRE	Milk	Fat	18	
	BRINKS CC NEWS DAY 661C2	BON VIEW BANDO 598	TM		27	
	MISS BB NEW HOTLINE 99A2	SVF BLACKBIRD 1620				
BW	Adj WW	Adj YW	SC	Adj REA	Adj IMF	
80	524	1029		12.70	5.444	

Looking to add carcass merit then here is one for the short list.

IMF actual score of 5.444 to ratio 114. REA ratio of 115. WW ratio of 107

Ranks in the top 3% for Milk and top 15% for Maternal.

SCC Crochet Weary 409						LTP
181	2/1/2009	UB10151137	Polled	Ultrablack	PHN: 409	
PINE RIDGE KABOOM L025 EA15443425	BALDRIDGE KABOOM K243	JAUER 353 TRAVELER 589 27	BW	SC	.6	
	LA TERRE PRIMROSE 374N	PLEASANTA OF CONANGA 736	WW	REA	28	
	OSWALD 02 OF LA TERRE	CA FUTURE DIRECTION 5321	YW	IMF	41	
CP MISS PINE R771520	MISS BB RIVAL 169X	SUMMITCREST PRIMROSE 2J02	Milk	Fat	7	
	HF TYSON 715C	HEADLINE NEWS OF LA TERRE	TM		21	
	ER LADY XS 60/B	MISS BB NEW HOTLINE 99A2				
BW	Adj WW	Adj YW	SC	Adj REA	Adj IMF	
78	562	1104		10.90	5.100	

More carcass merit!

IMF actual score of 5.100 to ratio 105

Ranks in the top 25% for WW.

Mr Acco 11/901						SCC
182	1/4/2009	C10148525	Polled	1/2 Blood	PHN: 11/901	
SYDGEN E161 PRECISION 2423 EA14284715	TWIN VALLEY PRECISION E161	G A R PRECISION 1680	BW	SC	.3	
	S A F PRIDE 9098	WC C BLACKCAP C9	WW	REA	8	
	CB MR HOUSTON	S A F PRIDE 7100	YW	IMF	15	
JDH LADY CLEMENS MANSO EB842621	JDH MISS DECATUR MANSO	E3 PATHFINDER 333	Milk	Fat	13	
		CB MS RANCHER'S DOT	TM		17	
		+JDH MADISON DE MANSO 737/4				
BW	Adj WW	Adj YW	SC	Adj REA	Adj IMF	
75	667		31.1	13.24	3.796	

The first Half Blood bull to sell at Southern. Half Angus and Half Brangus. Need to put some hybrid vigor back into your calf crop. Watch the scale go down at weigh up when you infuse that F1 blood into those cows. He can be a great one to keep those replacement females from as well as he ranks in the top 15% of the breed for Milk. *Actual YW 1190.

Southern Charolais

Your choice for pounds on the ground!

Southern Bravo Leader						
183	2/19/2009	M782299	Polled	Tattoo: 91564		
LT RIO BRAVO 3181 P M665507	LT RIO BLANCO 1234 P	WCR PRIME CUT 764 PLD	BW	SC		
	LT 7N OF DUKE 9083 PLD	LT PRAIRIE MAID 4054	.2	1.0		
	LT WYOMING WIND 4020 PLD	WCR SIR DUKE 611	WW	REA		
SCC SEXY SIS J142 P F861227	CC MISS SEXY SIS 817	LT UNLIMITED PRO 1128	30	.37		
		SCHURRTOP 5627	YW	Fat		
		LT CHAP'S LADY 2170P	56	.30		
		ABC COMANCHE 546 POLLED	Milk	Marb		
		CC MISS CARNATION 571	15	.09		
			TM	CW		
			30	20		
BW	Adj WW	Adj YW	SC	Adj REA	Adj IMF	
78	870	1310	33	13.72	3.25	

Take a good look at this Charolais bull we have picked to lead off the Charolais division. A very moderate bull with lots of thickness and correct phenotype all the way around. Low BW at 78#s actual, a whopping 870# adjusted WW and 1310# adjusted YW. Excellent EPDs across the board. Out of Rio Bravo 3181 himself. You won't go wrong here, great herd sire prospect.



183

Southern Firemaker 84018						
184	8/24/2008	M783968	Polled	Tattoo: 84018		
WDZ FIREMAKER 6062 EM729220	M6 GRID MAKER 104	WCR SIR TRADITION 066	BW	SC		
	THOMASSWISSERSWEET1764	VCR MISS MAC IV 317	0.0	.9		
	VCR SIR DUKE 914	LHD CIGAR E46	WW	REA		
SOUTHERN ELVIRA 6851 EF1066929	BALDRIDGE ELVIRA 62D	THOMAS MS BONANZA 8698	30	.29		
		WCR SIR DUKE 761	YW	Fat		
		WCR MISS MAC IV 534	60	-.018		
		ASC ELIMINATOR 032	Milk	Marb		
		ELVIRA 069	12	.00		
			TM	CW		
			27	13		
BW	Adj WW	Adj YW	SC	Adj REA	Adj IMF	
76	599	1069		13.19	3.09	

One of the first Firemaker sons to sell. A big volume bull with low BW and great EPD's across the board. Could have been the lead off bull as well. Don't miss a chance at another herd sire prospect.



184

Southern Precision 91501						
185	2/15/2009	EM782302	Polled	Tattoo: 91501		
WDZLPCPRECISION4032 M683276	THOMAS REDNECK 2609M	THOMAS OAHE WIND 0772	BW	SC		
	SCC MISS MARY G009	TR MS AJ 9664	1.0			
	LT WYOMING WIND 4020	4-L UNLIMITED YL06	WW	REA		
WCCC MS WIND 448 F1000058	BALDRIDGE ELVIRA 103H	MS SERENDIPITY EX 15	32	.12		
		SCHURRTOP 5627	YW	Fat		
		LT CHAP'S LADY 2170P	45	-.004		
		VCR SIR DUKE 914	Milk	Marb		
		BALDRIDGE ELVIRA 62D	0	-.11		
			TM	CW		
			16	13		
BW	Adj WW	Adj YW	SC	Adj REA	Adj IMF	
79	692	1228	38	15.3*	2.96*	

This bull is one of the first Precision 4032 sons to sell. Once again a big volume bull out of cow families on the top and bottom that produce growthy calves with a lot of muscle and depth and with volume and mass.

*Actual measurements.

Southern Wind 91558						
186	2/19/2009	EM782241	Polled	Tattoo: 91558		
LT THUNDERING WIND 5200P M705186	LT WYOMING WIND 4020	SCHURRTOP 5627	BW	SC		
	LT EASE'S PEARL 9034	LT CHAP'S LADY 2170P	1.8	1.0		
	2UP PEUGEOT	LT UNLIMITED EASE 9108	WW	REA		
SCC MISS DUKE 2507 F959968	CR MISS DUKE 157	LT UNLIMITED PEARL 7015P	33	.08		
		2UP LIMITED EDITIONL147	YW	Fat		
		PALGROVEESTELLA14PKJ124E	50	.033		
		BR DUKE 261	Milk	Marb		
		WCR MISS MAC 638	2	.07		
			TM	CW		
			19	20		
BW	Adj WW	Adj YW	SC	Adj REA	Adj IMF	
78	805	1323	38	15.06	3.33	

Sired by Thundering Wind 5200. Low BW and good growth numbers. Dam is one of the best Charolais cows phenotypically at Southern Cattle Company.

Southern Gulf Wind 91571

187	2/21/2009	EM782231	Polled	Tattoo: 91571		
SOUTHERN GULF WIND 4688 M696587	LT WYOMING WIND 4020	SCHURRTOP 5627	BW	SC		
		LT CHAP'S LADY 2170P	3.1			
	SCC MISS DUKE 2507	2UP PEUGEOT	WW	REA		
		CR MISS DUKE 157	34	.23		
SCC MISS MARY 3640 F1016370	LHD CIGAR E46	LHD MR PERFECT Y416	YW	Fat		
		LHD MS CLASSIC BELL X613	48	.002		
	CC MISS MARY G009	4-L UNLIMITED YL06	Milk	Marb		
		MS SERENDIPITY EX 15	-3	-.11		
					TM	CW
					14	14

Actual BW of 80#s
Pedigree that combines Wyoming Wind, Cigar, and the great Mary cow
Full brother sells as lot 189

Southern Suspect 91573

188	2/21/2009	M787785	Polled	Tattoo: 91573		
LC SUSPECT 0109 M611748	LT WYOMING WIND 4020	SCHURRTOP 5627	BW	SC		
		LT CHAP'S LADY 2170P	1.0	.1		
	LC MISS LACI CAE 104	TAC MR COOL 202	WW	REA		
		TJF COLOGNE 473	20	.40		
CC MS BUD 418-1137 F945576	LHD CIGAR E46	LHD MR PERFECT Y416	YW	Fat		
		LHD MS CLASSIC BELL X613	28	-.008		
	RC MS BUD 418	RC BUD 04	Milk	Marb		
		MISS SHOWGUN RC 416	-2	-.07		
					TM	CW
					8	8

Actual BW of only 78#s
Big REA bull at .40 which puts him in the top 20% for REA EPD.

Southern Gulf Wind 91574

189	2/22/2009	EM782232	Polled	Tattoo: 91574		
SOUTHERN GULF WIND 4688 M696587	LT WYOMING WIND 4020	SCHURRTOP 5627	BW	SC		
		LT CHAP'S LADY 2170P	3.1			
	SCC MISS DUKE 2507	2UP PEUGEOT	WW	REA		
		CR MISS DUKE 157	34	.23		
SCC MISS MARY 3640 F1016370	LHD CIGAR E46	LHD MR PERFECT Y416	YW	Fat		
		LHD MS CLASSIC BELL X613	48	.002		
	CC MISS MARY G009	4-L UNLIMITED YL06	Milk	Marb		
		MS SERENDIPITY EX 15	-3	-.11		
					TM	CW
					14	14

Actual BW of 80#s
Great pedigree. If you need to two bulls the same buy this bull and his ET brother lot 187.

Southern Rocket 92105

190	3/12/2009	M782235	Polled	Tattoo: 92105		
WC-WCCC ROCKETFUEL 7109 M735869	PF IMPRESSED 620	JWK IMPRESSIVE D040	BW	SC		
		MISS KC CROCUS 904	0.0			
	SCC MISS 3027	SPARROWS ALLIANCE 513G	WW	REA		
		WCR MISS L06 5078	25	.30		
SCC MISS DUKE 4652 F1017468	LT WYOMING WIND 4020	SCHURRTOP 5627	YW	Fat		
		LT CHAP'S LADY 2170P	40	.017		
	SCC MISS DUKE 2507	2UP PEUGEOT	Milk	Marb		
		CR MISS DUKE 157	-1	.04		
					TM	CW
					11	14

Low BW bull that is extremely long in body
Out of Rocket Fuel 7109, a very fertile bull that sold for \$25,000 for half interest 3 years ago.

Southern Gulf Wind 86027

191	11/1/2008	M778294	Polled	Tattoo: 86027		
SOUTHERN GULF WIND 4688 M696587	LT WYOMING WIND 4020	SCHURRTOP 5627	BW	SC		
		LT CHAP'S LADY 2170P	.4			
	SCC MISS DUKE 2507	2UP PEUGEOT	WW	REA		
		CR MISS DUKE 157	23	.18		
SCC GEMIE 3842 F1015628	EATONS CHROME 2471	EATONS BEYOND 7243	YW	Fat		
		EATONS MISS LISA 7708	43	.006		
	JWK GENIE G113	SKYMONT EASE 2078	Milk	Marb		
		JWK PAMELA E167	1	.14		
					TM	CW
					13	9

Low BW bull with great carcass value combining Wyoming wind and Eatons Beyond 7243.



Southern Gridmaker 807

192	8/12/2008	EM769835	Polled	Tattoo: 807		
M6 GRID MAKER 104 M633377	WCR SIR TRADITION 066	WCR SIR TRADITION 4402	BW	SC		
		IDEAL 809 45 OF 25	.8	.7		
	VCR MISS MAC IV 317	WCR SIR FA MAC 2244	WW	REA		
		VCR MISS DUCHESS 113	33	.62		
M6 MS 268 TANYA 4212 F1015506	M6 BIG TOP 268	LHD CIGAR E46	YW	Fat		
		M6 MS IMPRESSIVE 8380	56	-.013		
	M6 761 TANYA 1105	WCR SIR DUKE 761	Milk	Marb		
		M6 MISS MAC 4140	9	.12		
					TM	CW
					25	17

Low BW EPD with great growth numbers
Huge REA at .62, which puts him in the top 3% for REA EPD
Good all around bull here!



Southern Function 811

193

8/18/2008

EM769838

Polled

Tattoo: 811

M6 FUNCTION 169

M631721

LHD CIGAR E46

VCR MISS MAC IV 317

RC BUDSMYDAD 225

M6IMS 225 SUPREME 0236

F914236

MOORES MS MARK 7338

LHD MR PERFECT Y416

LHD MS CLASSIC BELL X613

WCR SIR FA MAC 2244

VCR MISS DUCHESS 113

RC BUD 04

MISS SHOWGUN RC 416

LHD MR SILVER MARK A35

MISS GCR SUPREME W13

BW	SC
1.1	.6
WW	REA
18	.41
YW	Fat
37	-.029
Milk	Marb
16	-.08
TM	CW
25	9

BW	Adj WW	Adj YW	SC	Adj REA	Adj IMF
90	623	946		11.81	2.31

Low BW EPD with good growth numbers
Lots of milk and big REA of .41, Top 15% for REA EPD
Want 3 bulls alike, get 3 full ET brothers in lots 193, 194, and 195.

Southern Function 813

194

8/18/2008

EM769840

Scurred

Tattoo: 813

M6 FUNCTION 169

M631721

LHD CIGAR E46

VCR MISS MAC IV 317

RC BUDSMYDAD 225

MOORES MS MARK 7338

LHD MR PERFECT Y416

LHD MS CLASSIC BELL X613

WCR SIR FA MAC 2244

VCR MISS DUCHESS 113

RC BUD 04

MISS SHOWGUN RC 416

LHD MR SILVER MARK A35

MISS GCR SUPREME W13

BW	SC
1.1	.6
WW	REA
18	.41
YW	Fat
37	-.029
Milk	Marb
16	-.08
TM	CW
25	9

BW	Adj WW	Adj YW	SC	Adj REA	Adj IMF
90	619	965		10.91	2.68

Same as lot 193 and lot 195
A chance for 3 bulls that are full ET brothers.
Pick and choose at its best.

Southern Function 814

195

8/27/2008

M631721

Scurred

Tattoo: 814

M6 FUNCTION 169

M631721

LHD CIGAR E46

VCR MISS MAC IV 317

RC BUDSMYDAD 225

M6IMS 225 SUPREME 0236

F914236

MOORES MS MARK 7338

LHD MR PERFECT Y416

LHD MS CLASSIC BELL X613

WCR SIR FA MAC 2244

VCR MISS DUCHESS 113

RC BUD 04

MISS SHOWGUN RC 416

LHD MR SILVER MARK A35

MISS GCR SUPREME W13

BW	SC
1.1	.6
WW	REA
18	.41
YW	Fat
37	-.029
Milk	Marb
16	-.08
TM	CW
25	9

BW	Adj WW	Adj YW	SC	Adj REA	Adj IMF
91	530	948		13.74	1.84

Full ET brother to lot 193 and 194
Buy all 3 bulls and turn them out on 100 cows and have the same genetic package across the herd.



195

Southern Prime Time 85186

196

10/4/2008

M496121

Polled

Tattoo: 85186

WCR PRIME CUT 764

WCR MISS DAKOTA WIND7158

RC BUDSMYDAD 225

RC MS ADVANTAGE 230

JWK IMPRESSIVE D040

WCR MISS EASE 4314

LT WYOMING WIND 4020

WCR MISS T 1375

RC BUD 04

MISS SHOWGUN RC 416

SCR SIR ADVANTAGE 9048

MISS ENTICER RC 617

WCR PRIME TIME 908

M496121

RC MS BUDSMYDAD458

F703128

BW	Adj WW	Adj YW	SC	Adj REA	Adj IMF
82	773	1026		12.47	3.00

BW	SC
-1.2	.5
WW	REA
18	.10
YW	Fat
36	-.005
Milk	Marb
0	.07
TM	CW
9	20

Low BW with and adjusted WW of 773#

Southern Smokester 86005

197

11/2/2008

M778296

Polled

Tattoo: 86005

JDJ SMOKESTER J1377

M509419

LHD CIGAR E46

JD MS COMMANDER B309

2UP PEUGEOT

SCC MISS DUKE 2507

F959968

CR MISS DUKE 157

WCR MISS MAC 638

LHD MR PERFECT Y416

LHD MS CLASSIC BELL X613

TA 854 SHOW COMMANDER

LHD MS CLASSIC ALI W177

2UP LIMITED EDITION L147

PALGROVEESTELLA14PKJ124E

BR DUKE 261

BW

1.2

WW

29

YW

39

Milk

13

TM

27

SC

.7

REA

.68

Fat

-.024

Marb

-.27

CW

20

BW	Adj WW	Adj YW	SC	Adj REA	Adj IMF
84	731	1099		15.18	2.84

Low BW, good growth numbers and REA of .68, which puts this bull in the top 2% for REA EPD. Smokester J1377 sons are filled with muscle.

Southern Beyond 86094

198

11/7/2008

M778291

Polled

Tattoo: 86094

SCC 7243 BEYOND 2265

M702538

EATONS BEYOND 7243

BALDRIDGE ELVIRA 103H

WK IMPRESSIVE D040

SCC MISS L06 3620

F1017031

WCR MISS L06 5078

EATONS CENTURION 3324

EATONS MISS FALLS 3639

VCR SIR DUKE 914

BALDRIDGE ELVIRA 62D

WCR SIR FA MAC 2244

HBR LADY LIZ 721

4-L UNLIMITED YL06

WCR MISS CENTURY MAC 126

BW	SC
.2	
WW	REA
35	.16
YW	Fat
67	.006
Milk	Marb
6	.06
TM	CW
23	22

BW	Adj WW	Adj YW	SC	Adj REA	Adj IMF
84	722	1226		13.95	2.77

Once again, low BW, great growth numbers, and positive carcass value. Hard to put this all together. Adjusted weaning of 722# and adjusted yearling of 1226#.



198

Southern Rancher 86181

199

11/11/2008

M778289

Polled

Tattoo: 86181

SCHURRTOP HCR RANCHER

M479774

SCHURRTOP EASE 8953

SCHURRTOP ML 6056 1184

BALDRIDGE KOJACK 29K

YON E516 N159

SOUTHERN GEORGANA 522

F1042932

LT UNLIMITED EASE 9108

SCHURRTOP 8423

SCHURRTOP-DC INTIMIDATOR

LHD MS EL MARKO B713

BALDRIDGE FASTTRACK 82F

BALDRIDGE ELVIRA 95H

C BUDSMYDAD 225

F VEDVEE COW E516

BW	SC
-1.5	.3
WW	REA
24	.09
YW	Fat
44	-.002
Milk	Marb
15	.00
TM	CW
27	16

BW	Adj WW	Adj YW	SC	Adj REA	Adj IMF
77	735	1109		12.31	2.67

A Schurrtop Rancher son with low BW and good growth numbers. A nice bull here.

Southern Sir Duke 86334

200

11/22/2008

M778286

Polled

Tattoo: 86334

WCR SIR DUKE 17J

M511446

VCR SIR DUKE 914

WCR MISS T 1371

PARROWS ALLIANCE 513G

JWK FRAGRANCE H019

WCR SIR DUKE 761

WCR MISS MAC IV 534

WCR SIR T 8007

WCR MISS DUKE 9012

LT WYOMING WIND 4020

CHARDEL PARADISE 513E

VCR SIR DUKE 914

JWK FRAGRANCE D123

SCC FRAGRANCE 6715

F1061899

BW	SC
1.2	.6
WW	REA
32	.23
YW	Fat
67	.007
Milk	Marb
11	.01
TM	CW
27	19

BW	Adj WW	Adj YW	SC	Adj REA	Adj IMF
84	724	1212		13.16	3.41

Low BW, excellent growth numbers, and positive carcass. All three in one package!

Southern Avalanch 86381

201

11/27/2008

M778284

Polled

Tattoo: 86381

EATONS AVALANCH 3192

M657607

EATONS SUPREMEVAL1003

EATONS MISS FALLS 3639

EATONS BEYOND 7243

JWK FRAGRANCE H019

LT POLLED VALUE 9089

EATONS SUPREME 9576

EATONS STELLAR 1029

EATONS MISS FALLS 6805

EATONS CENTURION 3324

EATONS MISS FALLS 3639

VCR SIR DUKE 914

JWK FRAGRANCE D123

SCC FRAGRANCE 1605

F1022670

BW	SC
-2.4	.9
WW	REA
19	-.34
YW	Fat
44	.45
Milk	Marb
13	.19
TM	CW
23	13

BW	Adj WW	Adj YW	SC	Adj REA	Adj IMF
83	712	1091		10.93	3.24

Low BW out of the Eatons Avalanch 3192 bull. The sire of this bull will breed 30 - 40 cows and look for more.

Southern Avalanch 86492

202	12/10/2008	M778283	Polled	Tattoo: 86492						
EATONS AVALANCH 3192 M657607	EATONS SUPREMEVAL1003 EATONS MISS FALLS 3639 M6 FUNCTION 169 M6MSD040UNLIMITED3103	LT POLLED VALUE 9089 EATONS SUPREME 9576 EATONS STELLAR 1029 EATONS MISS FALLS 6805 LHD CIGAR E46 VCR MISS MAC IV 317 JWK IMPRESSIVE D040 WCR MISS L06 5078			BW	SC				
					-.5	.9				
					WW	REA				
					22	.05				
M6 MS FUNCTION 502 F1032038					YW	Fat				
					48	.028				
					Milk	Marb				
					15	.14				
					TM	CW				
					26	16				

Another Eatons Avalanch 3192 sired bull. As mentioned above these bulls should have lots of libido and service a lot of cows like their sire.
Low BW as well.

Southern Avalanch 91329

203

1/30/2009

M782225

Polled

Tattoo: 91329

EATONS AVALANCH 3192

M657607

EATONS SUPREMEVAL1003

EATONS MISS FALLS 3639

THREE TREES WIND 0383

ORR'S LADY WIND 576

F1041589

ORR'S MS IMPRESSIVE 223

ORR'S MONTANA 965

LT POLLED VALUE 9089

EATONS SUPREME 9576

EATONS STELLAR 1029

EATONS MISS FALLS 6805

LT WYOMING WIND 4020

THREE TREES NANCY 8121

WK IMPRESSIVE D040

ORR'S MONTANA 965

BW	SC
-2.3	.8
WW	REA
26	-.22
YW	Fat
58	.46
Milk	Marb
8	.13
TM	CW
21	20

BW	Adj WW	Adj YW	SC	Adj REA	Adj IMF
75	750	960	38	14.10*	4.16*

Don't miss your chance on another high fertility bull with low BW and good growth numbers. You will be glad with the results.
*Actual measurements.

Southern Precision 91180

204

1/20/2009

M782755

Polled

Tattoo: 91180

THOMAS REDNECK 2609M

THOMAS OAH WIND 0772

TR MS AJ 9664

4-L UNLIMITED YL06

MS SERENDIPITY EX 15

SCHURRTOP 5627

LT CHAP'S LADY 2170

4-L UNLIMITED YL06

WCR MISS L06 5078

WCR MISS CENTURY MAC 126

WDZLPCPRECISION4032

M683276

SCC MISS MARY G009

LT WYOMING WIND 4020

SCC MICHELLE K300

F906017

BW	Adj WW	Adj YW	SC	Adj REA	Adj IMF
96	693	1010	38	17.00*	3.04*

BW	SC
3.0	
WW	REA
31	.09
YW	Fat
44	.002
Milk	Marb
-1	-.10
TM	CW
14	10

Below average BW EPD with solid growth numbers.
*Actual measurements.

Southern Duke 91416

205	2/9/2009	M782226	Polled	Tattoo: 91416		
DVCR DUKE K09 M606732	WCR SIR DUKE 761	BR DUKE 261			BW	SC
		WCR MISS TRADITION 8335			2.8	
	WCR MISS MAC IV 534	WCR SIR FA MAC 2244			WW	REA
		MISS DOC 509			38	.07
SCC MISS DUKE 4648 F1015645	LT WYOMING WIND 4020	SCHURRTOP 5627			YW	Fat
		LT CHAP'S LADY 2170			59	-.007
	SCC MISS DUKE 2505	ZUP PEUGEOT			Milk	Marb
		CR MISS DUKE 157			10	.05
					TM	CW
					29	12

Average Birth weight with excellent growth numbers.
Long solid bull that will add pounds to your calf crop.
*Actual measurements.

92108

206	3/3/2009	n/a	Polled	Tattoo: 92108						
CHAROLAIS BULL					BW	SC				
					WW	REA				
YW					Fat					
CHAROLAIS COW										
					Milk	Marb				
					TM	CW				

We could not identify this bull's sire. He is a full blood Charolais that will sell without papers.
A good commercial bull.

Southern's *Commercial Bred* *Females*

Lots 210 - 360

Your chance to upgrade your herd with quality replacement females from Southern Cattle Company.

- Females will sell in like groups of five. Lotting sheets will be available sale day.
- Commercial females are bred to forage efficient Angus, forage efficient Brangus and Debter Hereford bulls.
- Offering is mostly black, with baldies and Angus/Charolais crosses.
- Females are due October 2010 through January 2011. Many will be pairs by sale day.



Southern Sires

**10% discount on all bulls,
20% discount on
50 units or more**

***We are offering you the opportunity to purchase
semen on some of the top Brangus, Angus and
Charolais bull in our bull battery.***

**For more information call Southern at
850/352-2020**

**◆ Your Top Source for
Feed Efficient Genetics ◆**



↑ Southern Gulf Wind 4688 son
Sells as Lot 193

Braxton of Brinks 392T36 **\$40/unit**



BW	WW	YW	Milk	TM	SC	REA	Marb	Fat
1.1	24	55	9	21	1.20	.46	.16	.003

Suhn's Distinction 331T48 **\$40/unit**



BW	WW	YW	Milk	TM	SC	REA	Marb	Fat
-.5	21	42	19	30	.30	.30	-.01	-.007

CB *Hombre* 541T3

\$40/unit



BW	WW	YW	Milk	TM	SC	REA	Marb	Fat
2.7	44	66	8	30	1.50	.44	.02	.011

Lambert of Brinks 317R3

\$40/unit



BW	WW	YW	Milk	TM	SC	REA	Marb	Fat
.3	31	46	5	20	.50	.57	.49	.006

LTD of Brinks 415T28

\$40/unit



BW	WW	YW	Milk	TM	SC	REA	Marb	Fat
-.7	18	44	6	15	1.3	.45	.03	.0004

Patton of Brinks 30T22

\$40/unit



BW	WW	YW	Milk	TM	SC	REA	Marb	Fat
1.4	29	65	8	22	1.50	.74	.12	.011

SCC HBB *Portfolio* 916U

\$40/unit



BW	WW	YW	Milk	TM	SC	REA	Marb	Fat
2.5	45	74	2	25	1.30	.31	.05	.001

CRC *Specialist* 392T2

\$40/unit



BW	WW	YW	Milk	TM	SC	REA	Marb	Fat
-7.2	6	28	17	20	.50	.26	.21	.008

SQ *Credence* 67S

\$35/unit



BW	WW	YW	Milk	SC	CW	Marb	RE	Fat	\$B
+9	+59	+94	+24	-.11	-.14	+.73	+.18	-.040	+38.31

Southern *High Octane* 3115 **\$18/unit**



BW	WW	YW	Milk	SC	CW	Marb	RE	Fat	\$B
-.3	+38	+81	_.26	l+.28	+16	+.50	+.45	+.031	+52.72

Southern *Rito Nitro* 3435

\$40/unit



BW	WW	YW	Milk	SC	CW	Marb	RE	Fat	\$B
+1.2	+50	+93	+29	-.04	+7	+.67	-.06	+.025	+46.94

GAR *Perspective*

\$18/unit



BW	WW	YW	Milk	SC	CW	Marb	RE	Fat	\$B
+.8	+49	+88	+.28	-.96	+7	+.73	+.38	-.017	+57.14

Southern *GT Special Force* 17 **\$18/unit**



BW	WW	YW	Milk	SC	CW	Marb	RE	Fat	\$B
+3.1	+74	+120	+17	+1.01	+23	+.61	+.37	+.028	+63.99

Southern *Tidal Wave* 4838 **\$18/unit**



BW	WW	YW	Milk	SC	CW	Marb	RE	Fat	\$B
+1.6	+44	+75	+27	+.04	+17	+.50	+.14	+.024	+48.15

Southern Wrangler 7015 **\$18/unit**



BW	WW	YW	Milk	SC	CW	Marb	RE	Fat	\$B
+3.0	+48	+88	+20	+0.2	+20	+1.00	+31	+0.31	+63.05

Rito 6S8 of 2536 SA **\$18/unit**



BW	WW	YW	Milk	SC	CW	Marb	RE	Fat	\$B
+2.2	+50	+95	+28	+1.27	+22	+34	+0.1	+0.053	+41.64

DVCR Duke K09 **\$30/unit**



BW	WW	YW	Milk	SC	CW	REA	Marb	Fat
.4	45	69	15	.7	16	-.08	.12	-.030

Southern Gulf Wind 4688 **\$30/unit**



BW	WW	YW	Milk	SC	CW	REA	Marb	Fat
3.1	40	59	-3	.9	18	.22	.04	.013



SelectVAC® producers win big.

SelectVAC
Precondition to win.

Track Lot # 100/26 Head

Pay to the Order of SV Ranch LLC \$ 3,952.00

Three thousand nine hundred and fifty-two dollars and no/100

Pfizer Animal Health

Livestock Market

It may not be the lottery, but you can be a big winner with SelectVAC® from Pfizer Animal Health. SelectVAC helps you sell healthier, higher-value cattle. SelectVAC calves perform better and are four times less likely to get sick.¹ Preconditioned calves can bring up to \$44.91 more profit per head than nonpreconditioned calves.² Plus, buyers prefer to purchase from producers with consistently healthy cattle, which means repeat business. To enroll, sign up online at www.selectvac.com or contact your veterinarian or animal health supplier. SelectVAC, it's the ticket for bigger profits and a winning reputation.

Billy Arrighi – S. AL/ NW FL Call: 334-322-1463

Robert Pegues – MS Call: 601-896-2300

Jennie Schutte – E. TN/N. AL Call: 646-306-6131

Rocky Morgan – AR Call: 501-412-1006

Henry Jones – S. GA Call: 229-344-6893

Data on file. Source: Paper No. 3859-98-10-102, Pfizer Inc.
Using data from health and management practices on the sale price of beef calves marketed through seven depots. Livestock Health Solutions in 2009. Pfizer Inc. 2009.
All trademarks are the property of Pfizer Inc. or its affiliates and/or its licensors. ©2011 Pfizer Inc. All rights reserved. SVT0012

Pfizer Animal Health

Southern Embryo Connection



In November 2008, Southern Cattle Company launched a new division, Southern Embryo Connection. This service to the public is an extension of the embryo transfer that is currently in place at Southern. Over the last six years, Southern has transferred over 8400 embryos to average 1400 per year. With a well adapted recipient herd, Southern has achieved a conception rate of 62% for both fresh and frozen transfers.

All donors and recipis are managed and cared for by Southern's very competent and conscientious staff in the same way that the very best cattle at Southern Cattle Company are cared for. Daily checking of groups of cattle, vaccinations and health protocols that are second to none so that you can be assured of quality care of your investment. The embryology team has a combined experience of 38 years. They have worked for commercial ET companies and have performed research related to the field, as well as producing clones and transgenic animals.

Services Provided:

- Donor management at our existing ET center (able to house 100 plus donor candidates).
- Donors can be collected year round with access to fans and misters in the summer months.
- Embryo collection and freezing at our facility or at your farm.
- Registered Angus and mostly black crossbred recipients available for embryo transfer.
- Fresh embryos transferred monthly from November through May.
- Pregnancy checking and fetal sexing services.
- Qualified consultation to maximize your ET program.

Donor Barn Manager:

Kyle Jurney 334/685-6968

Embryologist:

Audy Spell
Joel Carter



***We are a USDA certified facility!
This facilitates collection process for
foreign shipment.***

***Ask about our calf raiser program!
Let us do the work so you can reap the
rewards.***



CATTLE FOR CHRIST



INTERNATIONAL

Cattle for Christ International Inc.

Attn: Glenn & Lisa Crumpler

4125 CR 636

Enterprise, AL 36330

334/333-4400

glennccrumpler@cattleforchrist.com

Southern Cattle Company (SCC) is a proud supporter of the ministries of Cattle for Christ International Inc. We challenge you to join us and all of the Cattle for Christ partners as we work together to take the Gospel and the love of Christ Jesus to every Man, woman and child around the world.

SCC has helped Cattle for Christ not only share the Gospel, but also train and equip Peruvian cattlemen and veterinarian professors in the techniques of artificial insemination, embryo collection and transfer, grazing management, nutrition, soil conservation, herd health and more. Over 11,000 straws of quality Angus semen was also sent to Peru to establish Angus genetics in the country for the purpose of helping the Peruvian cattlemen to feed and meet the needs of their own people. Students left the training stating "We came here not knowing Jesus and not knowing how to AI our cattle, but we are going home with both!"

All of us know the physical and spiritual needs around the world are huge. So is this opportunity for our American cattle family to come together and significantly help meet these needs around the world.

To see how you too can be a part of this important and life changing ministry, please contact Glenn Crumpler for additional information

NOTES

Glossary of Terms & Abbreviations

Expected Progeny Differences (EPD): is the prediction of how future progeny of each animal are expected to perform relative to the progeny of other animals listed in the database. EPDs are expressed in units of measure for the trait, plus or minus. Interim EPDs may appear on young animals when their performance has yet to be incorporated into the American Angus Association National Cattle Evaluation (NCE) procedures. This EPD will be preceded by an "I", and may or may not include the animal's own performance record for a particular trait, depending on its availability, appropriate contemporary grouping, or data edits needed for NCE.

ACC: Accuracy is the reliability that can be placed on the EPD. An accuracy of close to 1.0 indicates higher reliability.

GROWTH

Birth Weight EPD (BW): expressed in pounds, is a predictor of a sire's ability to transmit birth weight to his progeny compared to that of other sires.

Weaning Weight EPD (WW): expressed in pounds, is a predictor of a sire's ability to transmit weaning growth to his progeny compared to that of other sires.

Yearling Weight EPD (YW): expressed in pounds, is a predictor of a sire's ability to transmit yearling growth to his progeny compared to that of other sires.

Scrotal Circumference EPD (SC): expressed in centimeters is a predictor of the difference in transmitting ability for scrotal size compared to that of other sires.

MATERNAL

Maternal Milk EPD (Milk): is a predictor of a sire's genetic merit for milk and mothering ability as expressed in his daughters compared to daughters of other sires. In other words, it is that part of a calf's weaning weight attributed to milk and mothering ability.

CARCASS

Carcass Weight EPD (CW): expressed in pounds, is a predictor of the differences in hot carcass weight of a sire's progeny compared to progeny of other sires.

Marbling EPD (Marb): expressed as a fraction of the difference in USDA marbling score of a sire's progeny compared to progeny of other sires.

Ribeye Area EPD (RE): expressed in square inches, is a predictor of the difference in ribeye area of a sire's progeny compared to progeny of other sires.

Fat Thickness EPD (Fat): expressed in inches, is a predictor of the differences in external fat thickness at the 12th rib (as measured between the 12th and 13th ribs) of a sire's progeny compared to progeny of other sires.

ULTRASOUND - MEASUREMENT OF CARCASS TRAITS

Ultrasound scanning allows the measurement of back fat, loin eye area and percent intramuscular fat in live cattle. This opens the door for the collection of carcass data on a larger segment of sires in the purebred population. The principal deterrent to improving carcass traits in registered, purebred cattle has been the lack of adequate carcass data to generate breeding values for carcass traits on a significant proportion of the sires. Now that we can use ultrasound to generate a substantial database from which to calculate breeding values for carcass traits of more sires, rapid genetic progress in carcass quality will follow.

BACKGROUND

Ultrasound has been used to estimate muscle and fat measurements in cattle for more than 30 years. However, marked improvements in the portability and image resolution of the current generation of ultrasound equipment, along with interfacing with computer-assisted image analysis have finally brought ultrasound technology to the point of practical application. The three carcass measures that ultrasound systems have been adapted to estimate in live animals are back fat (BF), ribeye area (REA) and intramuscular fat (%IMF).

%IMF: The intramuscular fat in longissimus muscle of ribbed carcasses is the principal determinant of USDA quality grade in cattle slaughtered at less than 30 months of age. %IMF EPD is a predictor of the difference in a sire's progeny for percent intramuscular fat in the ribeye muscle compared to other sires.

Ribeye Area: The cross-sectional area of the longissimus dorsi muscle at a point between the 12th and 13th rib is the most common carcass measure of muscle thickness. REA is used in the calculation of yield grade. Ultrasound estimation of REA is more difficult than the estimation of BF because of the two-dimensional nature (length, depth). The most recent data indicated that the average absolute difference between ultrasound estimates and carcass measures of REA is less than 1 in RE EPD is a predictor of the difference in square inches of ultrasound ribeye area of a sire's progeny compared to the progeny of other sires.

Back Fat Thickness: Subcutaneous fat thickness between the 12th and 13th rib over the longissimus muscle is the most common measure of subcutaneous fat on a carcass. The BF thickness is directly related to the carcass yield grade. Most reports indicate that ultrasonic determination of BF is accurate to within .1 in of the actual measure in >70% of the animals scanned. FAT EPD, expressed in inches, is a

predictor of the difference in ultrasound fat thickness at the 12th rib of a sire's progeny compared to the progeny of other sires. It includes the weighted average of 60% of the rib fat measurement and 40% of the rump fat measurement.

The most recent advance in ultrasound technology has been in computer-aided analysis of longitudinal images of the longissimus muscle to estimate intramuscular fat. Three quarters of the ultrasound measurements of intramuscular fat are within 1.5% of the actual fat value.

The technology to measure marbling is still emerging. Nonetheless, direct measurement of BF or REA and current prediction models for %IMF via ultrasound are adequate to calculate reliable breeding values when large numbers of cattle are scanned. It is likely that this method of collecting carcass information will quickly replace the traditional "kill data" collected on carcasses at slaughter plants.

ULTRASOUND ADJUSTED MEASUREMENTS

Adj. Yrlg. Scrotal Circ: Adjusted yearling scrotal circumference, the bull's scrotal circumference measured in centimeters adjusted to one year of age.

Adj. %IMF: The percent intramuscular fat (marbling) adjusted to 365 days of age. Heritability for marbling is in the moderate range.

%IMF Ratio: The percent above or below average (100=average) a bull or female is for its marbling scan within its contemporary group.

Adj. Yrlg. Ribeye Area: Each bull's ribeye area measure in square inches and adjusted to one year of age.

REA Ratio: The percent above or below average (100=average) a bull is for his adjusted ribeye area.

Adj. Rib Fat: This is the off-test backfat measured in inches adjusted to 365 days of age.

Rib Fat Ratio: The percent above or below average (100=average) a bull or female is for its backfat scan within its contemporary group.

\$VALUE INDEXES

Weaned Calf Value (\$W): an index value expressed in dollars per head, is the expected average difference in future progeny performance for pre-weaning merit. \$W includes both revenue and cost adjustments associated with differences in birth weight, weaning direct growth, maternal milk, and mature cow size.

Feedlot Value (\$F): an index value expressed in dollars per head, is the expected average difference in future progeny performance for post-weaning merit compared to progeny of other sires.

QG & YG: The \$Grid Value (\$G) is composed of two index parts. These indexes are called yield grade value (\$YG) and quality grade value (\$QG), and are reported in dollars per head, with a higher value being more favorable.

The \$YG, the yield grade portion of \$G, is influenced by yield grad premiums and discounts along with EPDs from carcass and ultrasound databases for ribeye, fat thickness and weight. Based on these traits, \$YG has similarities to the percent retail product (%RP) EPD, but \$YG is expressed in dollars per head and reflects industry-driven economic weightings.

The quality grade component is \$QG, which accounts for contributions from the marbling EPD and the %IMF EPD in conjunction with the base industry quality grade schedules. As with \$YG, a three-year rolling average is used in \$QG to establish typical industry economic values in the index. Quality grade premiums are specified for Prime, CAB and Choice carcasses, as well as Select and Standard discounts.

As a reminder, the \$Grid Value (\$G) combines both \$QG and \$YG, and may be the best carcass decision tool for focusing on quality and red meat yield simultaneously. The use of \$QG and \$YG separately is intended for specialized emphasis in a particular carcass value area.

Grid Value (\$G): an index value expressed in dollars per head, is the expected average difference in future progeny performance for carcass grid merit compared to progeny of other sires.

Beef Value (\$B): an index value expressed in dollars per head, is the expected average difference in future progeny performance for post-weaning and carcass value compared to progeny of other sires.



Southern Cattle Company

4226 N Hwy 231
Marianna, FL 32448
850/352-2020



Selling

97 Angus Bulls

85 Brangus/Ultrablack Bulls

24 Charolais Bulls

150 Commercial Females

To preview videos of sale cattle, please visit us at:

www.southerncattlecompany.com

Directions to the Sale Site:

Ranch is located 9 miles north of I-10
and 25 miles south of Dothan, AL on US Hwy 231.

Cattle selling on:

